

Section 8: Summary of Cancer Data, 2006

Cancer incidence data are collected, verified, and maintained by the Florida Cancer Data System (FCDS), Florida's statewide cancer registry. The FCDS is administered by the Florida Department of Health, Bureau of Epidemiology and operated by the Sylvester Comprehensive Cancer Center at the University of Miami, Leonard M. Miller School of Medicine.

The FCDS began operation with a pilot project for cancer registration in 1980 and commenced statewide collection of cancer incidence data from all Florida hospitals in 1981. The FCDS now collects incidence data from hospitals, freestanding ambulatory surgical centers, radiation therapy facilities, pathology laboratories, and dermatopathologists' offices. Each facility, laboratory, and practitioner is required to report the FCDS within six months of each diagnosis and within six months of the date of each treatment. Consequently, there is an inherent time lag in the release of cancer registry data for surveillance activities. Currently, data is available through 2006.

During 2006, physicians diagnosed 100,303 primary cancers among Floridians, an average of 275 cases per day. Cancer occurs predominantly among older people as age is the top risk factor. Approximately 60% of the newly diagnosed cancers in 2006 occurred in persons age 65 and older; this age group accounts for 18% of Florida's population. The four most common cancers in Floridians were lung and bronchus (16,154 cases), prostate (14,043 cases), female breast (12,826 cases), and colorectal (10,173 cases), which accounted for 57% of all new cases in blacks, and 53% in whites. Fifty-three percent of new cancers were diagnosed in males. The number of new cancer cases in Florida's five most populous counties (Broward, Miami-Dade, Hillsborough, Orange, and Palm Beach) which had 42% of Florida's population accounted for 39% of the new cancer cases in Florida in 2006.

Over the 26-year period from 1981 to 2006, males had a higher incidence (age-adjusted incidence rate) than females. Among blacks, the incidence among males was between 55% and 102% higher than that among females. Among whites, the incidence among males was between 28% and 53% higher than that among females. White females had higher age-adjusted incidence rates than black females in all 26 years. The racial disparity varied between 10% and 27%. Black males had higher age-adjusted incidence rates than white males in all years, except in 1987, 1988, and 2006. The racial disparity between black and white males increased from 1989 until 1995; however, it has steadily declined since 1996.

More information about the burden of cancer in Florida is provided in the *Florida Annual Cancer Report*, an epidemiological series, available on the department's web site at www.doh.state.fl.us/disease_ctrl/epi/cancer/CancerIndex.htm, or the FCDS web site at www.fcds.med.miami.edu.

Table 1. Number of New Cancer Cases by Sex and Race, Florida, 2006

	All Cancers	Lung & Bronchus	Prostate	Breast	Colorectal	Bladder	Head & Neck	Non- Hodgkin(1)	Melanoma	Ovary	Cervix
Florida (2)	100,303	16,154	14,043	12,826	10,173	4,740	3,881	3,905	3,388	1,478	907
Female	46,787	7,306	-	12,826	4,939	1,138	1,089	1,833	1,342	1,478	907
Male	53,442	8,835	14,043	-	5,222	3,601	2,787	2,071	2,046	-	-
Black	8,888	1,153	1,704	1,226	986	152	323	318	-	117	159
White	88,506	14,755	11,837	11,203	8,914	4,440	3,468	3,486	3,388	1,315	719
Black Female	4,162	405	-	1,226	530	57	92	147	-	117	159
White Female	41,236	6,769	-	11,203	4,270	1,041	968	1,635	1,342	1,315	719
Black Male	4,718	746	1,704	-	456	95	230	171	-	-	-
White Male	47,216	7,976	11,837	-	4,633	3,398	2,498	1,850	2,046	-	-

Source of data: Florida Cancer Data System

(1) Non-Hodgkin refers to Non-Hodgkin lymphoma throughout this report.

(2) Florida incidence total counts and rates throughout this report include 1,140 new cancer cases in persons of "Other" races, 882 cases with unknown race, 44 cases with unknown or unspecified sex, and 2 cases with unknown age. Totals by sex include cases with unknown age and race, as well as cases with Other race. Totals by race include unknown sex and age.

Table 2. Number of New Cancer Cases by County, Florida, 2006

	All Cancers	Lung & Bronchus	Prostate	Breast	Colorectal	Bladder	Head & Neck	Non-Hodgkin	Melanoma	Ovary	Cervix
Florida	100,303	16,154	14,043	12,826	10,173	4,740	3,881	3,905	3,388	1,478	907
Alachua	912	135	133	132	100	27	33	34	31	15	10
Baker	98	18	14	^	^	^	^	^	^	^	^
Bay	859	137	134	113	72	39	38	34	40	13	^
Bradford	111	23	22	^	12	^	^	^	^	^	^
Brevard	3,739	612	548	474	349	191	154	145	153	44	28
Broward	8,424	1,198	997	1,143	898	379	317	368	261	142	87
Calhoun	51	^	^	^	^	^	^	^	^	^	^
Charlotte	1,242	224	229	126	102	90	46	43	38	14	^
Citrus	1,152	232	194	111	124	83	41	29	36	17	^
Clay	806	131	108	124	73	34	27	22	36	^	^
Collier	2,095	294	427	190	180	112	79	81	107	34	11
Columbia	322	78	32	29	35	14	14	10	^	^	^
Miami-Dade	10,872	1,329	1,574	1,454	1,299	384	436	468	183	175	148
DeSoto	145	25	26	17	13	^	^	^	^	^	^
Dixie	95	23	^	10	^	^	^	^	^	^	^
Duval	4,028	645	577	585	358	159	148	154	124	57	51
Escambia	1,531	259	227	214	137	60	67	52	39	14	11
Flagler	568	107	69	82	53	26	17	36	14	^	^
Franklin	49	13	^	^	^	^	^	^	^	^	^
Gadsden	218	44	23	20	22	^	15	^	^	^	^
Gilchrist	76	14	10	^	^	^	^	^	^	^	^
Glades	44	^	^	^	^	^	^	^	^	^	^
Gulf	75	12	10	^	^	^	^	^	^	^	^
Hamilton	75	18	11	^	^	^	^	^	^	^	^
Hardee	115	16	16	^	13	^	^	^	^	^	^
Hendry	144	29	16	21	13	^	10	^	^	^	^
Hernando	1,324	249	171	151	147	79	48	58	48	16	^
Highlands	856	163	103	64	100	35	20	40	31	14	^
Hillsborough	5,312	832	717	710	517	199	233	216	160	86	47
Holmes	145	28	14	14	15	^	^	^	^	^	^
Indian River	1,037	189	120	134	115	47	40	37	44	17	^
Jackson	275	48	48	36	29	10	17	^	^	^	^
Jefferson	75	10	10	16	^	^	^	^	^	^	^
Lafayette	17	^	^	^	^	^	^	^	^	^	^
Lake	2,501	440	392	259	242	153	70	98	89	52	15
Lee	3,693	635	597	452	332	158	153	125	141	53	26
Leon	821	127	115	121	90	18	37	27	43	10	^
Levy	238	48	32	34	21	11	12	^	^	^	^
Liberty	24	^	^	^	^	^	^	^	^	^	^
Madison	73	^	11	11	10	^	^	^	^	^	^
Manatee	1,888	303	293	209	199	122	81	68	70	44	16
Marion	2,398	429	424	291	256	103	93	85	80	26	22
Martin	1,009	151	144	130	98	69	47	30	41	15	^
Monroe	396	85	39	35	40	19	24	13	19	^	^
Nassau	367	65	73	38	38	20	13	^	11	^	^
Okaloosa	1,009	177	134	149	93	42	49	31	34	14	^
Okeechobee	229	48	29	23	24	11	^	^	11	^	^
Orange	4,201	599	560	581	456	150	147	181	138	56	51
Osceola	941	140	112	115	112	35	39	32	33	15	20
Palm Beach	8,064	1,235	956	1,062	744	550	274	333	353	116	69
Pasco	2,971	540	400	326	310	167	105	106	115	39	28
Pinellas	6,064	1,041	719	869	619	339	242	234	209	82	44
Polk	3,502	627	501	383	345	148	110	150	145	41	35
Putnam	464	112	64	60	41	17	19	15	12	^	^
Saint Johns	902	142	133	127	82	30	42	38	36	12	10
Saint Lucie	1,498	268	225	191	161	99	58	46	46	18	17
Santa Rosa	709	115	106	85	80	26	37	23	32	10	^
Sarasota	3,010	509	521	412	277	173	108	102	99	55	16
Seminole	1,710	250	218	270	172	72	61	68	62	22	14
Sumter	655	113	138	81	57	41	19	24	27	^	^
Suwannee	249	42	29	23	36	10	11	^	^	^	^
Taylor	109	23	16	12	19	^	^	^	^	^	^
Union	181	45	24	13	20	^	^	^	^	^	^
Volusia	3,058	591	368	369	319	115	120	134	80	49	20
Wakulla	119	21	16	14	11	^	^	^	^	^	^
Walton	249	41	35	26	25	12	^	11	12	^	^
Washington	114	23	12	14	^	^	10	^	^	^	^

^ Statistics for cells with fewer than 10 cases are not displayed.

Source of data: Florida Cancer Data System

Table 3. Age-Adjusted Incidence Rates ⁽¹⁾ by Sex and Race, Florida, 2006

	All Cancers			Lung & Bronchus			Prostate			Breast			Colorectal			Bladder		
	Rate	CI		Rate	CI		Rate	CI		Rate	CI		Rate	CI		Rate	CI	
Florida ⁽²⁾	433.1	430.4	435.9	67.0	66.0	68.1	128.8	126.7	131.0	108.7	106.8	110.6	42.8	41.9	43.6	19.2	18.7	19.8
Female	380.9	377.3	384.4	55.3	54.0	56.6	-	-	-	108.7	106.8	110.6	37.6	36.5	38.6	8.3	7.8	8.8
Male	500.4	496.2	504.7	81.3	79.7	83.1	128.8	126.7	131.0	-	-	-	48.9	47.6	50.2	33.0	31.9	34.1
Black	389.7	381.4	398.2	52.8	49.7	56.1	179.1	170.3	188.4	90.6	85.5	95.9	44.4	41.6	47.4	7.6	6.4	8.9
White	432.5	429.6	435.4	68.3	67.2	69.4	120.8	118.6	123.0	109.6	107.5	111.8	41.9	41.0	42.8	19.9	19.3	20.5
Black Female	319.2	309.4	329.3	32.6	29.5	36.1	-	-	-	90.6	85.5	95.9	41.6	38.1	45.4	5.0	3.8	6.5
White Female	384.7	380.8	388.6	57.6	56.2	59.1	-	-	-	109.6	107.5	111.8	36.3	35.2	37.5	8.5	7.9	9.0
Black Male	487.8	473.1	503.0	80.7	74.6	87.2	179.1	170.3	188.4	-	-	-	48.3	43.7	53.4	10.9	8.7	13.6
White Male	494.3	489.9	498.9	81.2	79.5	83.1	120.8	118.6	123.0	-	-	-	48.2	46.8	49.7	34.2	33.1	35.4
	Head & Neck			Non-Hodgkin			Melanoma			Ovary			Cervix					
	Rate	CI		Rate	CI		Rate	CI		Rate	CI		Rate	CI				
Florida ⁽²⁾	17.1	16.6	17.7	17.0	16.5	17.6	17.6	17.0	18.3	12.2	11.5	12.8	9.2	8.6	9.9			
Female	8.9	8.4	9.4	14.6	13.9	15.3	14.2	13.4	15.0	12.2	11.5	12.8	9.2	8.6	9.9			
Male	26.5	25.5	27.5	19.9	19.1	20.8	22.1	21.2	23.1	-	-	-	-	-	-			
Black	13.7	12.2	15.3	12.7	11.3	14.2	-	-	-	9.1	7.5	10.9	11.3	9.6	13.3			
White	17.5	16.9	18.1	17.1	16.5	17.7	17.6	17.0	18.3	12.5	11.8	13.2	9.0	8.3	9.7			
Black Female	7.0	5.6	8.7	10.8	9.1	12.8	-	-	-	9.1	7.5	10.9	11.3	9.6	13.3			
White Female	9.1	8.5	9.7	14.7	13.9	15.5	14.2	13.4	15.0	12.5	11.8	13.2	9.0	8.3	9.7			
Black Male	22.4	19.4	25.8	14.8	12.5	17.5	-	-	-	-	-	-	-	-	-			
White Male	27.0	26.0	28.1	20.0	19.0	20.9	22.1	21.2	23.1	-	-	-	-	-	-			

Source of data: Florida Cancer Data System

(1) Rates are expressed as number of cases per 100,000 population per year, adjusted to the 2000 U.S. standard population.

(2) Florida incidence rates throughout this report include 1,140 new cancers in persons of "Other" races, 882 cases with unknown race, 44 cases with unknown or unspecified sex, and 2 cases with unknown age. Rates calculated by sex include cases with unknown age and race, as well as cases with Other race. Rates by race include unknown sex and age.

Table 4. Age-Adjusted Incidence Rates ⁽¹⁾ by County, Florida, 2006

	All Cancers			Lung & Bronchus			Prostate			Breast			Colorectal		
	Rate	CI		Rate	CI		Rate	CI		Rate	CI		Rate	CI	
Florida	433.1	430.4	435.9	67.0	66.0	68.1	128.8	126.7	131.0	108.7	106.8	110.6	42.8	41.9	43.6
Alachua	443.3	414.6	473.5	68.7	57.5	81.6	141.2	117.8	168.3	118.4	98.8	141.0	49.2	39.9	60.0
Baker	403.7	325.9	496.8	77.1	44.9	126.3	116.5	62.1	223.3	^	^	^	^	^	^
Bay	441.2	411.9	472.3	69.7	58.5	82.8	141.0	117.7	168.3	110.5	90.8	133.8	37.0	28.9	47.0
Bradford	352.3	289.5	426.5	71.7	45.3	110.1	144.0	89.6	223.4	^	^	^	38.0	19.6	69.1
Brevard	474.4	458.9	490.4	74.1	68.3	80.5	142.0	130.3	154.8	122.1	111.0	134.4	43.2	38.7	48.3
Broward	422.0	412.9	431.3	59.5	56.2	63.1	114.2	107.1	121.6	107.8	101.5	114.4	43.9	41.1	47.0
Calhoun	322.5	239.6	428.1	^	^	^	^	^	^	^	^	^	^	^	^
Charlotte	386.5	361.8	413.4	59.7	51.7	69.9	132.3	114.9	153.9	84.5	67.7	106.4	27.6	22.1	35.4
Citrus	410.5	384.3	439.1	77.1	66.9	89.9	135.1	116.1	159.4	86.5	68.9	109.9	41.5	33.9	51.8
Clay	451.6	420.4	484.7	74.5	62.0	88.9	121.0	98.6	147.8	129.0	107.0	154.5	41.4	32.3	52.4
Collier	403.1	385.2	422.0	52.3	46.3	59.1	159.8	144.8	176.4	75.3	64.2	88.3	33.9	28.9	39.8
Columbia	428.7	382.7	479.6	100.3	79.2	126.3	88.2	60.0	126.5	75.4	50.0	112.1	48.4	33.5	68.6
Miami-Dade	415.9	408.1	423.9	50.2	47.6	53.0	135.8	129.2	142.8	102.7	97.4	108.1	49.4	46.8	52.2
DeSoto	347.2	290.2	414.3	57.2	36.1	89.0	112.3	73.1	170.0	89.1	47.8	159.0	31.2	16.1	57.7
Dixie	444.2	356.8	551.1	101.8	63.8	160.6	^	^	^	79.3	37.9	178.3	^	^	^
Duval	479.7	464.9	495.0	78.7	72.7	85.1	158.0	145.1	172.0	124.4	114.5	135.1	42.6	38.2	47.3
Escambia	448.4	426.1	471.8	74.8	65.9	84.6	146.0	127.5	166.6	120.6	104.7	138.5	39.9	33.5	47.4
Flagler	351.8	321.3	385.9	60.2	48.9	75.3	80.3	62.3	106.3	108.4	84.2	141.1	34.6	25.3	48.2
Franklin	291.5	212.9	397.6	76.5	39.6	144.0	^	^	^	^	^	^	^	^	^
Gadsden	425.5	370.5	486.9	85.5	62.0	115.7	104.8	65.9	160.3	72.0	43.8	113.4	42.7	26.7	65.7
Gilchrist	388.5	305.0	491.6	66.2	36.0	117.2	97.9	46.7	193.9	^	^	^	^	^	^
Glades	309.5	222.5	428.0	^	^	^	^	^	^	^	^	^	^	^	^
Gulf	377.2	296.1	480.6	60.1	31.0	115.0	99.6	47.1	204.1	^	^	^	^	^	^
Hamilton	510.4	400.5	643.1	125.5	74.0	201.2	139.6	68.7	266.7	^	^	^	^	^	^
Hardee	424.6	349.9	511.6	59.5	33.9	98.2	120.0	68.4	197.4	^	^	^	46.5	24.8	81.4
Hendry	435.1	366.6	513.3	86.9	58.1	125.7	94.1	53.7	158.3	129.9	80.2	200.6	40.3	21.4	69.7
Hernando	486.0	457.1	516.9	81.7	71.2	94.2	116.6	99.4	137.9	113.2	93.9	136.8	56.7	46.8	68.9
Highlands	491.3	454.0	532.0	79.1	66.6	95.0	118.9	95.6	149.3	79.6	57.9	109.7	48.0	38.1	61.4
Hillsborough	455.6	443.4	468.1	72.3	67.4	77.4	135.6	125.8	146.1	113.1	104.9	121.8	44.4	40.6	48.4
Holmes	612.8	515.7	725.3	113.7	75.4	167.9	121.8	66.0	211.5	114.9	61.8	207.0	60.7	33.8	104.2
Indian River	440.3	411.5	471.4	74.4	63.6	87.4	106.5	87.8	129.8	126.8	104.3	154.4	45.6	37.0	56.5
Jackson	463.0	409.5	522.7	80.8	59.5	108.6	169.8	124.9	228.1	126.1	87.3	179.8	50.2	33.5	73.7
Jefferson	433.5	340.2	550.2	58.0	27.6	115.5	130.1	62.1	251.9	176.2	99.9	305.5	^	^	^
Lafayette	203.8	118.2	335.4	^	^	^	^	^	^	^	^	^	^	^	^
Lake	542.4	519.8	566.0	88.1	79.7	97.5	165.0	148.8	183.3	118.1	102.8	135.6	49.9	43.5	57.3
Lee	402.0	388.4	416.2	63.3	58.3	68.7	126.6	116.5	137.6	104.3	94.1	115.5	34.4	30.7	38.7
Leon	377.8	351.8	405.5	64.3	53.4	76.9	117.7	96.4	142.8	98.9	81.8	119.0	42.0	33.6	52.1
Levy	429.6	375.4	491.5	81.6	59.9	111.3	115.7	78.5	170.0	116.1	79.6	168.5	39.4	24.0	63.5
Liberty	327.0	208.7	495.8	^	^	^	^	^	^	^	^	^	^	^	^
Madison	329.7	257.8	417.9	^	^	^	102.0	50.6	188.7	93.2	45.9	180.0	46.9	22.2	89.8
Manatee	404.0	385.1	423.9	59.4	52.7	67.0	130.9	116.1	147.5	90.4	77.9	104.9	41.6	35.7	48.3
Marion	479.0	458.9	500.0	81.0	73.2	89.6	169.9	153.8	187.7	115.9	102.0	131.6	50.5	44.1	57.7
Martin	401.7	375.1	430.5	51.9	43.6	62.4	113.8	95.7	136.4	107.2	87.7	131.9	35.8	28.7	45.3
Monroe	366.3	330.2	406.4	75.1	59.8	94.8	65.6	46.2	93.7	67.7	46.7	98.3	38.7	27.5	54.6
Nassau	446.1	400.5	496.2	81.2	62.3	104.8	174.5	135.9	224.6	88.5	62.1	124.7	47.8	33.5	67.0
Okaloosa	492.3	462.2	524.1	87.0	74.5	101.0	134.9	112.7	161.1	136.3	115.1	160.6	46.4	37.4	57.0
Okeechobee	489.9	427.6	560.1	96.6	71.0	130.2	121.2	81.0	176.8	106.8	66.6	167.9	50.4	32.1	77.3
Orange	455.3	441.5	469.6	68.4	63.0	74.2	134.7	123.5	146.8	114.6	105.4	124.4	50.8	46.2	55.7
Osceola	392.6	367.6	418.9	60.6	50.9	71.7	101.1	83.0	122.6	86.3	71.1	103.9	47.8	39.3	57.8
Palm Beach	426.6	416.9	436.5	60.9	57.5	64.6	112.2	105.1	119.8	114.1	106.9	121.7	36.6	33.9	39.5
Pasco	449.1	432.2	466.7	76.0	69.5	83.2	124.8	112.7	138.2	100.3	88.9	113.2	44.2	39.2	49.9
Pinellas	437.1	425.8	448.8	71.1	66.8	75.8	112.2	104.1	120.9	124.0	115.5	133.2	41.5	38.2	45.1
Polk	480.0	463.9	496.5	81.7	75.4	88.6	141.6	129.4	154.8	102.7	92.4	114.1	45.6	40.8	50.8
Putnam	457.2	415.4	503.1	105.4	86.5	128.6	123.9	95.2	161.4	117.8	88.8	156.1	39.5	28.1	55.5
Saint Johns	434.9	406.6	465.1	67.6	56.9	80.3	133.1	111.3	158.8	118.2	98.2	142.0	38.6	30.6	48.5
Saint Lucie	392.1	371.6	413.6	66.0	58.1	75.0	119.1	103.9	136.6	104.3	89.1	121.9	39.5	33.5	46.6
Santa Rosa	480.0	444.7	517.5	76.0	62.5	91.9	149.3	121.6	182.8	108.5	86.4	134.9	54.8	43.3	68.8
Sarasota	407.1	391.1	424.0	61.0	55.5	67.2	146.0	133.4	160.3	120.2	107.2	135.1	34.1	29.9	39.1
Seminole	409.4	389.9	429.6	63.3	55.6	71.8	111.7	97.0	128.4	116.6	103.0	131.6	41.2	35.2	48.0
Sumter	385.9	354.5	420.9	68.1	55.2	85.1	155.0	129.3	188.3	106.2	81.6	140.7	33.8	24.9	47.1
Suwannee	471.7	413.9	537.2	73.1	52.6	101.7	114.6	76.5	169.7	91.3	56.6	144.5	67.0	46.7	95.7
Taylor	437.1	358.2	530.1	95.6	60.4	146.0	127.7	72.4	217.6	104.2	52.8	192.0	73.7	44.2	118.2
Union	1249.0	1066.7	1460.8	317.6	229.0	437.6	318.2	194.1	530.9	260.3	138.1	457.6	152.6	90.8	248.8
Volusia	412.1	397.1	427.6	75.8	69.7	82.4	103.6	93.2	115.1	99.4	89.0	111.0	40.2	35.8	45.2
Wakulla	385.6	317.6	465.5	67.6	41.4	106.5	94.6	52.8	168.1	86.6	46.8	151.7	41.9	20.6	77.0
Walton	331.6	291.1	377.4	52.3	37.5	72.8	89.0	61.9	126.9	70.3	45.4	107.6	32.5	21.0	49.8
Washington	413.5	340.3	500.6	81.3	51.3	126.1	92.0	47.3	168.1	99.2	52.8	177.8	^	^	^

(1) Rates are expressed as number of cases per 100,000 population per year, adjusted to the 2000 U.S. standard population.

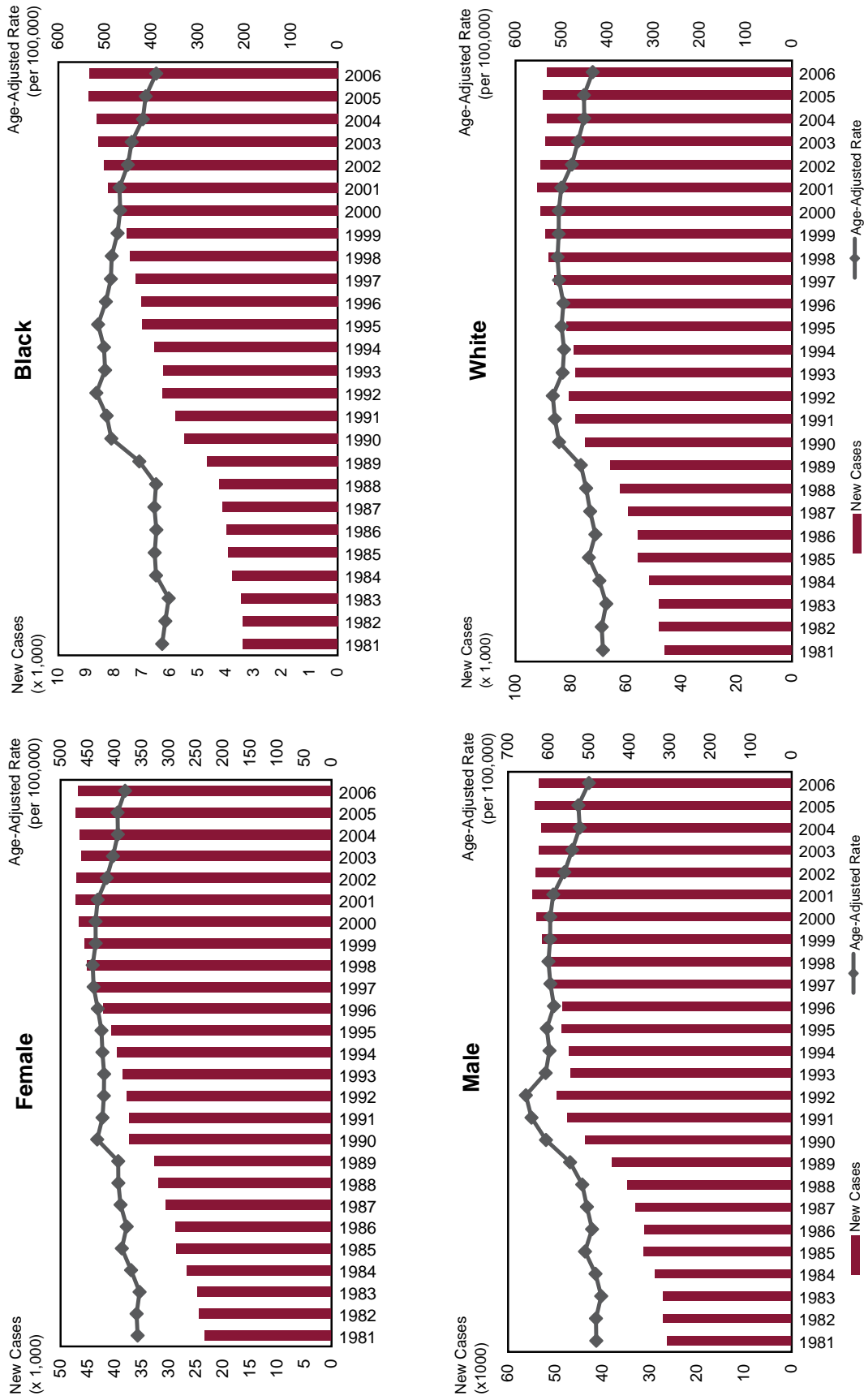
^ Statistics for cells with fewer than 10 cases are not displayed

Source of data: Florida Cancer Data System

Table 4. Age-Adjusted Incidence Rates ⁽¹⁾ by County, Florida, 2006

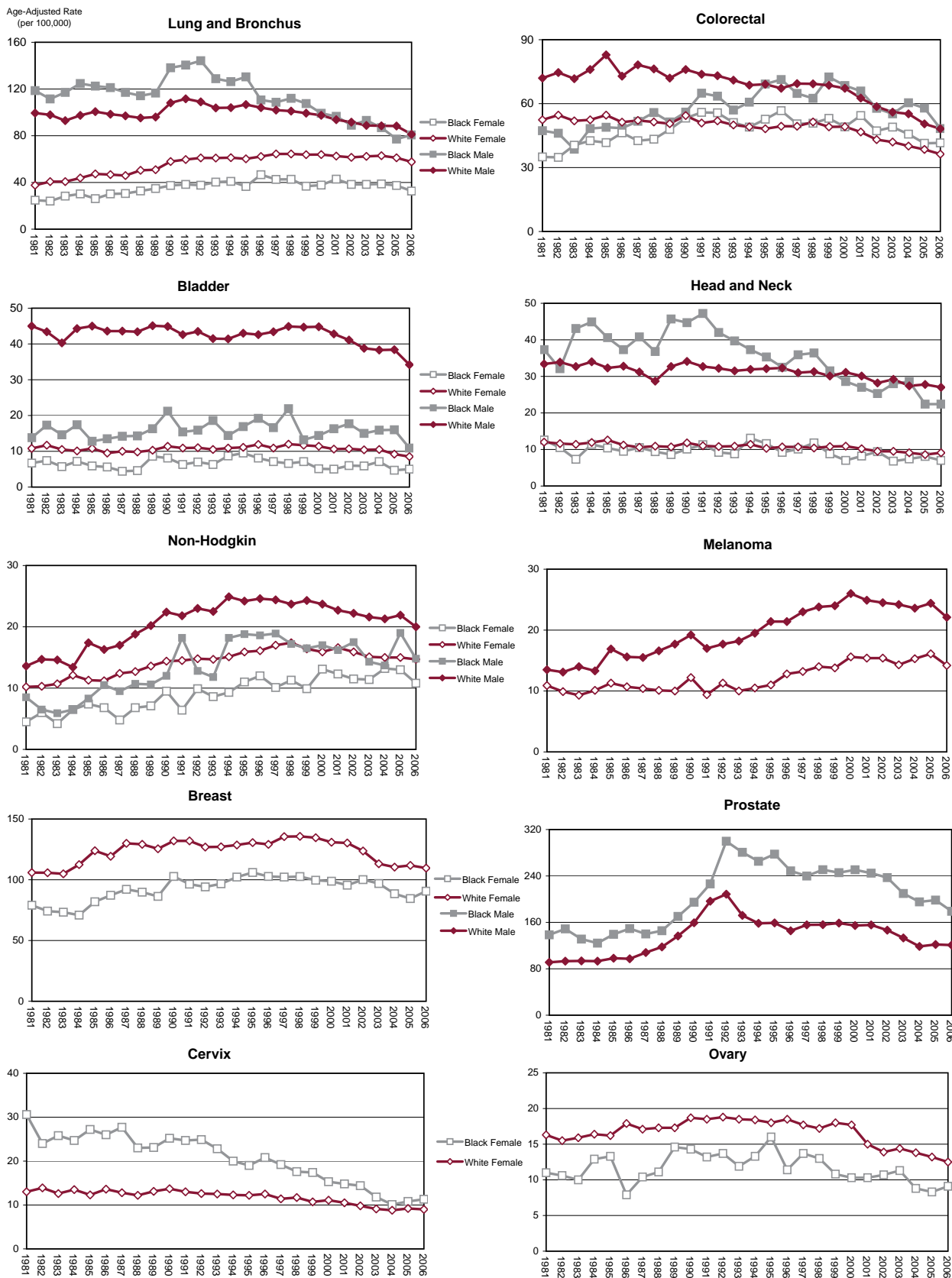
	Bladder			Head & Neck			Non-Hodgkin			Melanoma			Ovary			Cervix		
	Rate	CI		Rate	CI		Rate	CI		Rate	CI		Rate	CI		Rate	CI	
Florida	19.2	18.7	19.8	17.1	16.6	17.7	17.0	16.5	17.6	17.6	17.0	18.3	12.2	11.5	12.8	9.2	8.6	9.9
Alachua	13.4	8.8	19.7	16.2	11.1	23.0	17.3	11.9	24.4	18.6	12.5	27.1	12.3	6.8	21.1	9.7	4.6	18.3
Baker	^	^	^	^	^	^	^	^	^	^	^	^	^	^	^	^	^	^
Bay	21.0	14.9	29.1	18.9	13.3	26.3	17.8	12.3	25.3	23.9	16.9	33.1	13.1	6.9	23.4	^	^	^
Bradford	^	^	^	^	^	^	^	^	^	^	^	^	^	^	^	^	^	^
Brevard	22.7	19.6	26.4	19.5	16.4	23.0	18.5	15.5	22.0	23.0	19.3	27.4	9.9	7.2	13.9	9.3	6.0	14.0
Broward	18.3	16.4	20.3	16.1	14.3	18.0	18.4	16.6	20.5	16.4	14.4	18.7	13.5	11.3	16.0	8.9	7.1	11.0
Calhoun	^	^	^	^	^	^	^	^	^	^	^	^	^	^	^	^	^	^
Charlotte	23.4	18.5	30.6	14.5	10.1	21.5	14.1	9.6	21.2	19.2	12.3	29.5	7.9	3.8	18.4	^	^	^
Citrus	25.8	20.3	34.1	18.0	12.4	26.7	11.9	7.1	20.1	12.7	8.5	20.4	9.4	5.4	20.6	^	^	^
Clay	20.0	13.8	28.3	14.9	9.7	22.2	12.9	8.0	20.0	22.4	15.6	31.4	^	^	^	^	^	^
Collier	19.5	16.0	23.9	15.6	12.2	20.0	15.8	12.3	20.2	24.0	19.3	29.7	14.3	9.5	21.3	7.4	3.6	13.8
Columbia	17.6	9.6	31.0	18.2	9.8	32.1	14.8	7.0	28.4	^	^	^	^	^	^	^	^	^
Miami-Dade	14.5	13.1	16.1	16.6	15.1	18.2	18.1	16.5	19.8	8.6	7.4	10.0	12.1	10.3	14.0	11.2	9.5	13.2
DeSoto	^	^	^	^	^	^	^	^	^	^	^	^	^	^	^	^	^	^
Dixie	^	^	^	^	^	^	^	^	^	^	^	^	^	^	^	^	^	^
Duval	19.7	16.7	23.1	17.2	14.5	20.3	18.3	15.5	21.5	20.2	16.8	24.2	12.2	9.2	15.9	10.9	8.1	14.4
Escambia	17.2	13.1	22.3	19.5	15.1	25.0	14.9	11.1	19.7	14.1	10.0	19.7	7.4	4.0	13.1	7.2	3.6	13.4
Flagler	13.8	9.0	23.1	9.8	5.6	18.7	21.4	14.8	32.3	10.3	5.4	21.2	^	^	^	^	^	^
Franklin	^	^	^	^	^	^	^	^	^	^	^	^	^	^	^	^	^	^
Gadsden	^	^	^	28.4	15.8	48.0	^	^	^	^	^	^	^	^	^	^	^	^
Gilchrist	^	^	^	^	^	^	^	^	^	^	^	^	^	^	^	^	^	^
Glades	^	^	^	^	^	^	^	^	^	^	^	^	^	^	^	^	^	^
Gulf	^	^	^	^	^	^	^	^	^	^	^	^	^	^	^	^	^	^
Hamilton	^	^	^	^	^	^	^	^	^	^	^	^	^	^	^	^	^	^
Hardee	^	^	^	^	^	^	^	^	^	^	^	^	^	^	^	^	^	^
Hendry	^	^	^	31.0	14.8	57.9	^	^	^	^	^	^	^	^	^	^	^	^
Hernando	24.7	19.1	32.3	21.1	14.9	29.7	20.1	14.5	27.9	24.0	16.7	34.0	9.4	5.1	18.8	^	^	^
Highlands	15.6	10.7	24.6	16.6	9.5	28.4	20.1	13.7	30.4	21.8	13.4	35.5	13.4	6.4	29.9	^	^	^
Hillsborough	17.5	15.1	20.1	19.7	17.2	22.4	18.6	16.2	21.3	16.3	13.8	19.0	13.5	10.8	16.7	8.2	6.0	10.9
Holmes	^	^	^	^	^	^	^	^	^	^	^	^	^	^	^	^	^	^
Indian River	16.3	11.6	23.4	20.4	14.0	29.5	14.8	10.1	22.0	19.7	13.7	28.8	11.9	6.6	23.0	^	^	^
Jackson	16.9	8.1	32.9	28.7	16.6	47.7	^	^	^	^	^	^	^	^	^	^	^	^
Jefferson	^	^	^	^	^	^	^	^	^	^	^	^	^	^	^	^	^	^
Lafayette	^	^	^	^	^	^	^	^	^	^	^	^	^	^	^	^	^	^
Lake	29.4	24.7	35.1	15.2	11.7	19.8	21.9	17.5	27.5	23.8	18.6	30.3	25.5	18.4	35.3	8.7	4.6	15.8
Lee	15.2	12.8	18.0	17.7	14.9	21.1	13.8	11.3	16.8	17.5	14.5	21.1	12.2	8.8	16.7	7.7	4.9	11.8
Leon	8.9	5.2	14.3	16.9	11.8	23.7	12.5	8.2	18.6	26.0	18.6	35.6	8.7	4.1	16.7	^	^	^
Levy	19.5	9.7	38.4	19.8	10.2	38.3	^	^	^	^	^	^	^	^	^	^	^	^
Liberty	^	^	^	^	^	^	^	^	^	^	^	^	^	^	^	^	^	^
Madison	^	^	^	^	^	^	^	^	^	^	^	^	^	^	^	^	^	^
Manatee	22.5	18.6	27.3	19.4	15.2	24.6	13.6	10.4	17.7	16.5	12.6	21.5	18.2	12.9	25.5	10.1	5.7	17.1
Marion	18.1	14.6	22.4	20.0	16.0	25.1	17.5	13.7	22.4	17.8	13.8	23.1	10.3	6.4	16.3	14.1	8.6	22.2
Martin	25.4	19.2	34.1	21.9	15.6	30.8	10.6	7.1	16.8	17.8	12.1	26.6	10.2	5.3	21.6	^	^	^
Monroe	18.5	11.1	30.8	20.6	13.1	32.8	12.5	6.4	23.8	19.7	11.7	33.2	^	^	^	^	^	^
Nassau	23.4	14.2	37.6	16.0	8.4	28.9	^	^	^	14.4	6.9	27.8	^	^	^	^	^	^
Okaloosa	20.4	14.7	27.9	23.0	17.0	30.7	15.5	10.5	22.3	18.2	12.6	25.9	12.9	7.0	22.2	^	^	^
Okeechobee	22.1	10.9	42.3	^	^	^	^	^	^	27.5	13.3	52.6	^	^	^	^	^	^
Orange	17.5	14.8	20.6	15.5	13.0	18.2	19.1	16.3	22.1	18.1	15.2	21.5	11.2	8.5	14.7	9.7	7.2	12.9
Osceola	15.4	10.7	21.6	15.5	11.0	21.5	13.7	9.4	19.6	15.7	10.8	22.2	11.6	6.4	19.5	15.3	9.3	23.9
Palm Beach	25.2	23.0	27.5	15.6	13.7	17.6	17.2	15.3	19.4	22.4	19.9	25.1	12.0	9.8	14.7	9.6	7.4	12.4
Pasco	22.8	19.4	26.9	16.9	13.7	20.9	16.2	13.1	20.1	19.3	15.6	23.8	11.8	8.1	17.1	11.4	7.3	17.3
Pinellas	22.4	20.1	25.1	18.0	15.7	20.5	17.3	15.0	19.8	18.0	15.5	21.0	10.8	8.5	13.8	8.3	5.9	11.4
Polk	18.8	15.9	22.2	16.1	13.2	19.6	21.3	17.9	25.2	23.8	19.9	28.3	10.9	7.7	15.3	12.9	8.9	18.2
Putnam	15.2	8.9	26.5	19.8	11.7	32.9	16.3	9.0	28.8	17.2	8.4	33.0	^	^	^	^	^	^
Saint Johns	14.0	9.4	20.7	19.6	14.1	27.2	18.3	12.9	25.8	18.5	12.9	26.4	10.1	5.2	19.4	12.1	5.6	23.6
Saint Lucie	24.0	19.4	29.8	15.0	11.3	19.9	11.9	8.6	16.5	12.8	9.2	17.9	10.5	6.0	17.7	13.6	7.7	22.6
Santa Rosa	18.7	12.1	27.8	24.3	17.0	34.0	15.3	9.7	23.5	23.9	16.3	34.3	13.3	6.4	25.1	^	^	^
Sarasota	19.9	16.8	23.8	17.8	14.3	22.3	12.2	9.8	15.6	15.5	12.2	19.9	14.1	10.3	19.9	6.5	3.4	12.1
Seminole	18.5	14.4	23.4	14.2	10.8	18.3	16.5	12.8	21.0	16.6	12.7	21.4	9.8	6.1	15.0	5.7	3.1	9.9
Sumter	22.2	15.8	33.1	11.8	6.7	21.9	14.9	9.0	25.7	15.7	9.9	27.1	^	^	^	^	^	^
Suwannee	17.6	8.4	36.1	21.5	10.6	41.7	^	^	^	^	^	^	^	^	^	^	^	^
Taylor	^	^	^	^	^	^	^	^	^	^	^	^	^	^	^	^	^	^
Union	^	^	^	^	^	^	^	^	^	^	^	^	^	^	^	^	^	^
Volusia	14.3	11.7	17.4	17.9	14.7	21.7	17.8	14.8	21.4	13.1	10.2	16.8	11.8	8.6	16.3	6.5	3.	

Figure 1. New Cases and Age-Adjusted Incidence Rates for All Cancers by Sex and by Race, Florida, 1981-2006



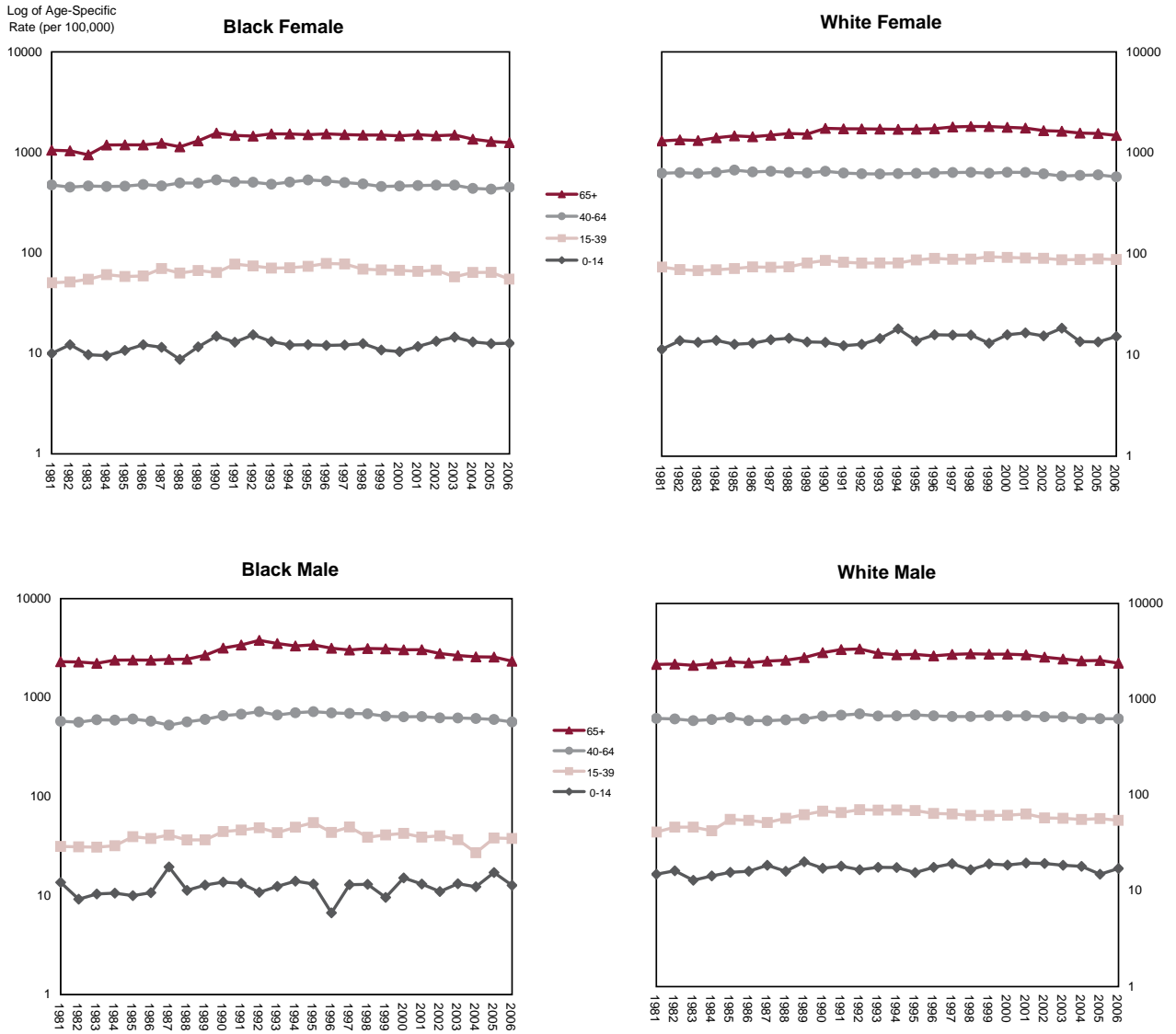
Source of data: Florida Cancer Data System

Figure 2. Age-Adjusted Incidence Rates by Sex and Race, Florida, 1981-2006



Source of data: Florida Cancer Data System

Figure 3. Age-Specific Incidence Rates for All Cancers by Sex, Race, and Age Group, Florida, 1981-2006



Source of data: Florida Cancer Data System