

Summary of Cancer Data, 2004

Section 6

Cancer Surveillance in Florida

Cancer incidence data are collected, verified, and maintained by the Florida Cancer Data System (FCDS), Florida's statewide central cancer registry. The FCDS is administered by the Florida Department of Health, Bureau of Epidemiology and operated by the Sylvester Comprehensive Cancer Center at the University of Miami Leonard M. Miller School of Medicine.

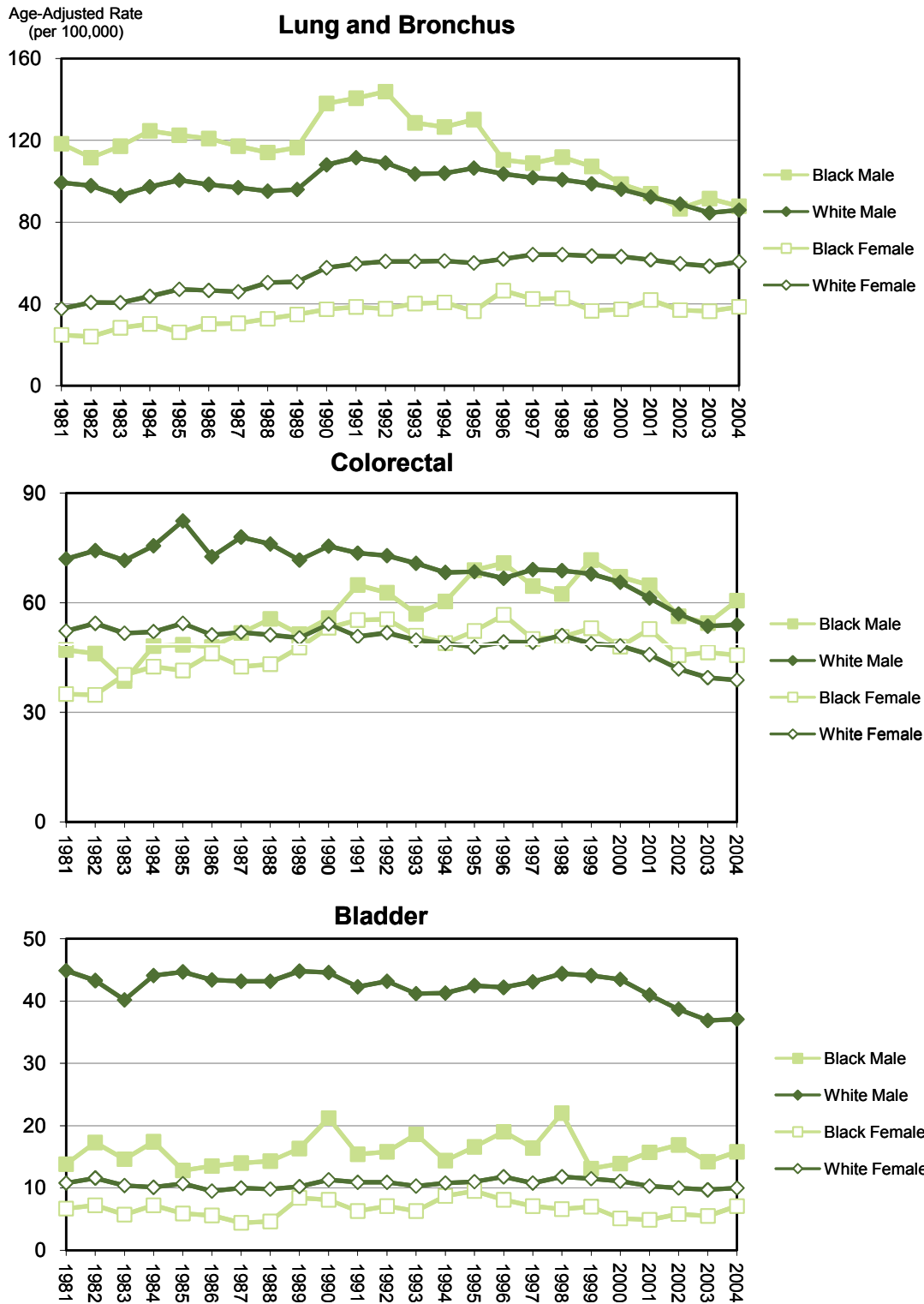
The FCDS began operation with a pilot project for cancer registration in 1980 and commenced statewide collection of cancer incidence data from all Florida hospitals in 1981. The FCDS now collects incidence data from hospitals, freestanding ambulatory surgical centers, radiation therapy facilities, pathology laboratories, and dermatopathologists' offices.

During 2004, physicians diagnosed 95,931 primary cancers among Floridians, an average of 263 cases per day. Cancer occurs predominantly among older people as age is the top risk factor. Sixty-one percent of the newly diagnosed cancers in 2004 occurred in persons age 65 and older; this age group accounts for 18 percent of Florida's population. The four most common cancers in Floridians were lung and bronchus (16,350 cases), prostate (12,150 cases), female breast (11,961 cases), and colorectal (10,710 cases), which accounted for 57 percent of all new cases in blacks, and 53 percent in whites. Fifty-three percent of new cancers were diagnosed in males. The number of new cancer cases in Florida's five most populous counties (Broward, Miami-Dade, Hillsborough, Orange and Palm Beach), which had 43 percent of Florida's population, accounted for 38 percent of the new cancer cases in Florida in 2004.

Over the 24-year period from 1981 to 2004, males had a higher incidence (age-adjusted incidence rate) than females. Among blacks, the incidence among males was between 54 percent and 102 percent higher than that among females. Among whites, the incidence among males was between 28 percent and 53 percent higher than that among females. White females had higher age-adjusted incidence rates than black females in all years. The racial disparity varied between 10 percent and 27 percent. Black males had higher age-adjusted incidence rates than white males in all years, except in 1987 and 1988. The racial disparity between black and white males increased from 1989 until 1995; however, it has declined from 16 percent in 1995 to 6 percent in 2004.

More information about the burden of cancer in Florida is provided in the *Florida Annual Cancer Report*, an epidemiological series, available on the department's web site at www.doh.state.fl.us/disease_ctrl/epi/cancer/CancerIndex.htm, or the FCDS web site at www.fcds.med.miami.edu.

Figure 2.1 Age-Adjusted Incidence Rates by Sex and Race, Florida, 1981-2004



Source of data: Florida Cancer Data System

Figure 2.2 Age-Adjusted Incidence Rates by Sex and Race, Florida, 1981-2004

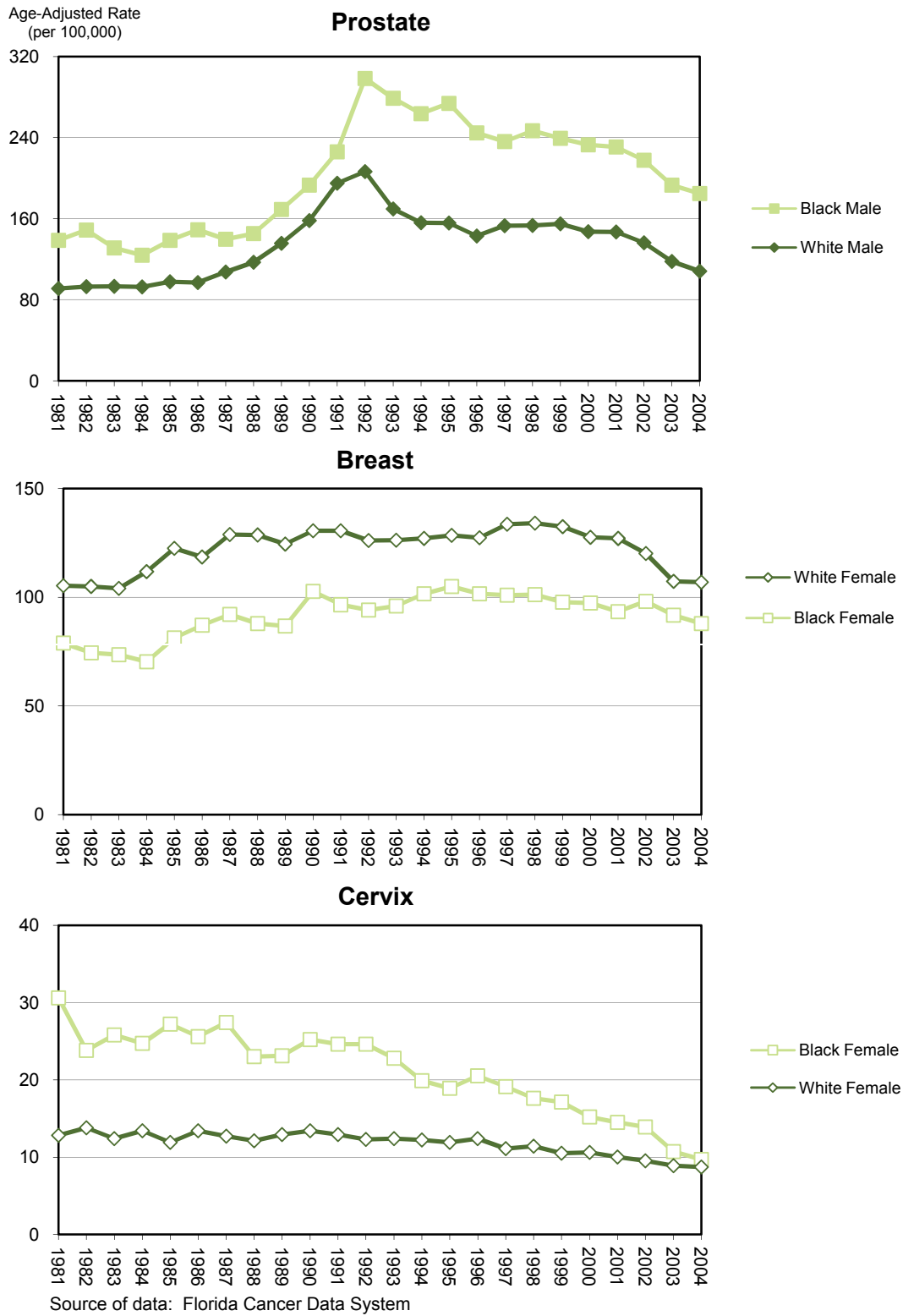
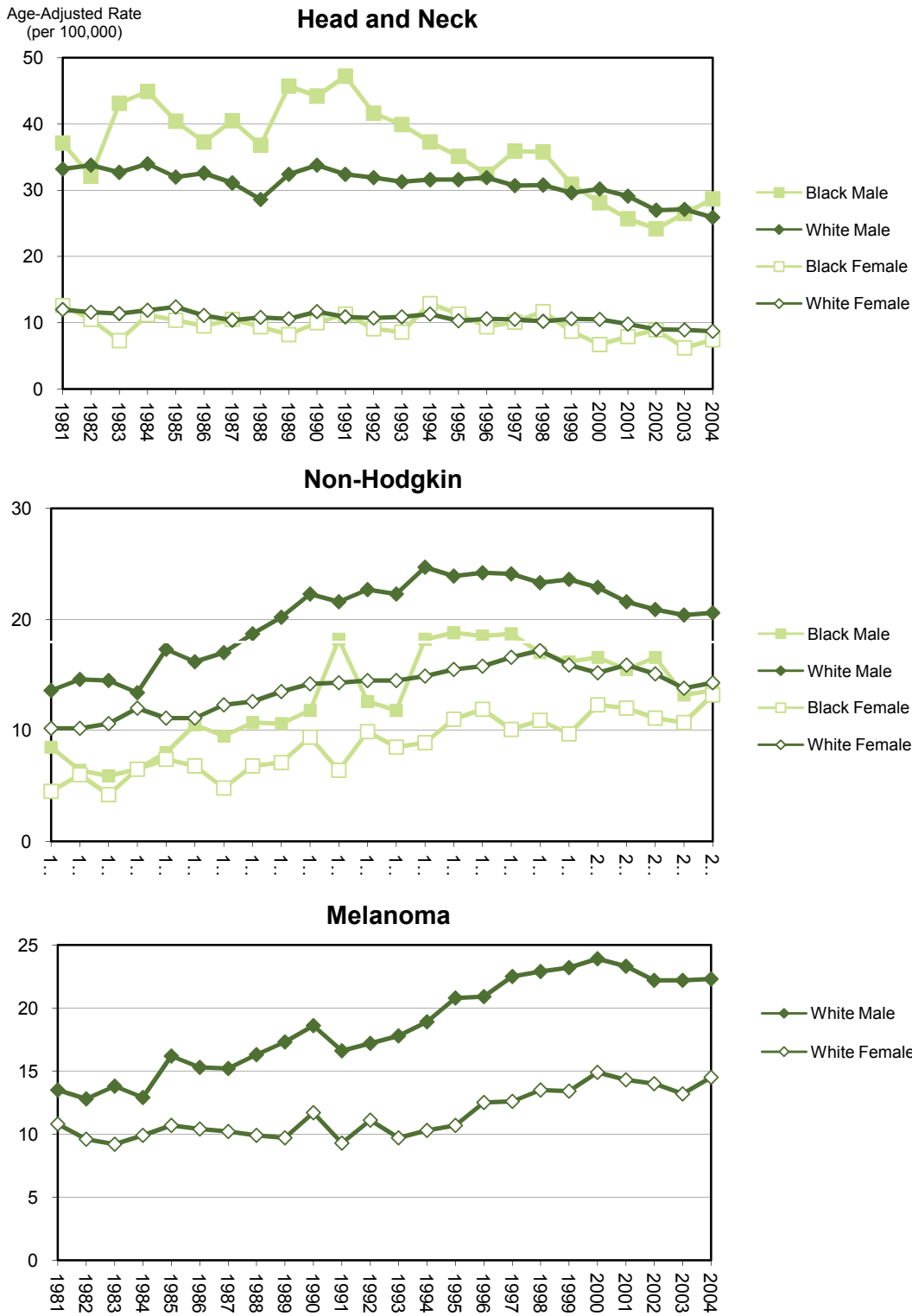


Figure 2.3 Age-Adjusted Incidence Rates by Sex and Race, Florida, 1981-2004



Source of data: Florida Cancer Data System

Figure 3. Age-Specific Incidence Rates for All Cancers by Sex, Race, and Age Group, Florida, 1981-2004

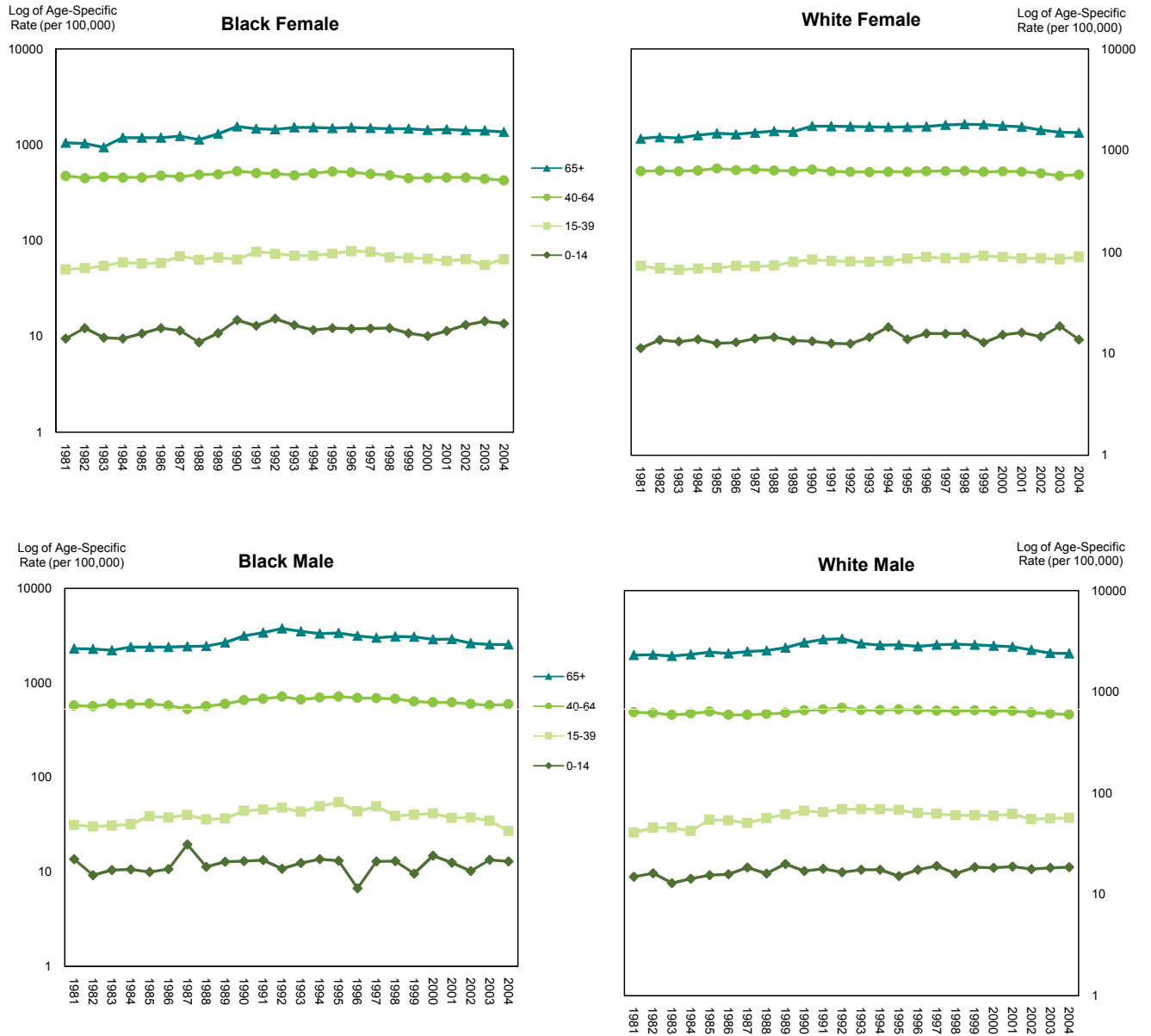


Table 1. Number of New Cancer Cases by Sex and Race, Florida, 2004

	All Cancers	Lung & Bronchus	Prostate	Breast	Colorectal	Bladder	Head & Neck	Non- Hodgkin(1)	Melanom a	Ovary	Cervi x
Florida (2)	95,931	16,350	12,150	11,961	10,710	5,003	3,627	3,754	3,277	1,485	826
Female	45,235	7,438		11,961	5,106	1,288	1,013	1,744	1,323	1,485	826
Male	50,652	8,902	12,150		5,600	3,712	2,613	2,006	1,954		
Black	8,328	1,133	1,554	1,068	992	182	358	307		102	123
White	85,581	15,016	10,298	10,619	9,490	4,715	3,186	3,374	3,277	1,351	683
Black Female	3,875	430		1,068	505	72	92	158		102	123
White Female	40,415	6,916		10,619	4,485	1,192	900	1,554	1,323	1,351	683
Black Male	4,451	702	1,554		487	110	266	148			
White Male	45,131	8,091	10,298		5,002	3,520	2,285	1,817	1,954		

Source of data: Florida Cancer Data System

(1) Non-Hodgkin refers to Non-Hodgkin's lymphoma throughout this report.

(2) Florida incidence totals throughout this report include 1,140 new cancers in persons of "Other" races, 882 cases with unknown race, 44 cases with unknown or unspecified sex, and 2 cases with unknown age. Totals by sex include cases with unknown age and race, as well as cases with Other race. Totals by race include unknown sex and age.

Table 3. Age-Adjusted Incidence Rates (1) by Sex and Race, Florida, 2004

	All Cancers			Lung & Bronchus			Prostate			Breast			Colorectal			Bladder		
	Rate	CI		Rate	CI		Rate	CI		Rate	CI		Rate	CI		Rate	CI	
Florida (2)	430.5	427.8	433.3	70.6	69.5	71.7	116.3	114.2	118.4	105.2	103.3	107.1	46.5	45.6	47.4	21.1	20.5	21.7
Female	380.1	376.5	383.8	58.6	57.2	59.9				105.2	103.3	107.1	39.8	38.7	40.9	9.7	9.2	10.3
Male	498.5	494.1	502.9	86.1	84.3	87.9	116.3	114.2	118.4				54.9	53.5	56.4	35.8	34.7	37.0
Black	412.9	403.8	422.2	58.7	55.3	62.4	184.7	175.1	194.7	87.9	82.7	93.5	51.9	48.6	55.3	10.6	9.1	12.3
White	430.5	427.5	433.5	71.7	70.6	72.9	108.2	106.2	110.4	106.9	104.8	109.0	45.6	44.6	46.5	21.9	21.3	22.6
Black Female	333.5	322.9	344.4	38.6	35.0	42.5				87.9	82.7	93.5	45.7	41.7	50.0	7.1	5.5	9.0
White Female	385.2	381.3	389.2	60.6	59.2	62.1				106.9	104.8	109.0	38.8	37.6	40.0	10.0	9.5	10.7
Black Male	526.3	509.9	543.1	87.8	81.0	95.1	184.7	175.1	194.7				60.6	55.0	66.8	15.8	12.8	19.4
White Male	492.2	487.6	496.8	85.9	84.0	87.8	108.2	106.2	110.4				54.0	52.5	55.5	37.1	35.8	38.3

	Head & Neck			Non-Hodgkin			Melanoma			Ovary			Cervix		
	Rate	CI		Rate	CI		Rate	CI		Rate	CI		Rate	CI	
Florida (2)	16.8	16.2	17.3	17.1	16.5	17.7	17.8	17.2	18.4	12.7	12.1	13.4	8.6	8.0	9.3
Female	8.6	8.1	9.2	14.4	13.7	15.1	14.5	13.7	15.3	12.7	12.1	13.4	8.6	8.0	9.3
Male	26.2	25.2	27.3	20.4	19.5	21.3	22.3	21.3	23.3						
Black	16.5	14.8	18.4	13.7	12.1	15.4				8.7	7.1	10.6	9.7	8.1	11.7
White	16.7	16.2	17.4	17.2	16.6	17.8	17.8	17.2	18.4	13.3	12.5	14.0	8.7	8.0	9.4
Black Female	7.4	6.0	9.2	13.2	11.2	15.6				8.7	7.1	10.6	9.7	8.1	11.7
White Female	8.7	8.1	9.3	14.3	13.5	15.0	14.5	13.7	15.3	13.3	12.5	14.0	8.7	8.0	9.4
Black Male	28.7	25.2	32.7	13.6	11.4	16.2									
White Male	25.9	24.8	27.0	20.6	19.6	21.6	22.3	21.3	23.3						

Source of data: Florida Cancer Data System

(1) Rates are expressed as number of cases per 100,000 population per year, adjusted to the 2000 U.S. standard population.

(2) Florida incidence rates throughout this report include 1,140 new cancers in persons of "Other" races, 882 cases with unknown race, 44 cases with unknown or unspecified sex, and 2 cases with unknown age. Rates calculated by sex include cases with unknown age and race, as well as cases with Other race. Rates by race include unknown sex and age.

