

Section 7
Cancer Data
2008

Cancer incidence data are collected, verified, and maintained by the Florida Cancer Data System (FCDS), Florida's statewide cancer registry. The FCDS is administered by the Florida Department of Health Bureau of Epidemiology and operated by the Sylvester Comprehensive Cancer Center at the University of Miami, Leonard M. Miller School of Medicine.

The FCDS began operation with a pilot project for cancer registration in 1980 and commenced statewide collection of cancer incidence data from all Florida hospitals in 1981. The FCDS now collects incidence data from hospitals, freestanding ambulatory surgical centers, radiation therapy facilities, pathology laboratories, and private physician offices. Each facility, laboratory, and practitioner is required to report the FCDS within six months of each diagnosis and within six months of the date of each treatment. Consequently, there is an inherent time lag in the release of cancer registry data for surveillance activities.

During 2008, physicians diagnosed 105,207 primary cancers among Floridians, an average of 288 cases per day. Cancer occurs predominantly among older people as age is the top risk factor for developing disease. Approximately 59% of the newly diagnosed cancers in 2008 occurred in persons aged 65 years and older; this age group accounts for 18% of Florida's population. The four most common cancers in Floridians were lung and bronchus (16,339 cases), prostate (14,391 cases), female breast (13,749 cases), and colorectal (10,199 cases), which accounted for 52% of all new cases in Florida. Fifty-three percent of new cancers were diagnosed in males. The number of new cancer cases in Florida's five most populous counties (Broward, Miami-Dade, Hillsborough, Palm Beach, and Pinellas) accounted for 39% of the new cancer cases in Florida.

Over the 28-year period from 1981 to 2008, males had a higher incidence (age-adjusted incidence rate) than females. Among blacks, the incidence among males was between 55% and 102% higher than that among females, depending on the cancer site of comparison. Among whites, the incidence among males was between 28% and 53% higher than that among females. White females had higher age-adjusted incidence rates than black females in all 28 years. The racial disparity varied between 10% and 27%. Black males had higher age-adjusted incidence rates than white males in all years, except in 1987, 1988, and 2006. The racial disparity between black and white males increased from 1989 until 1995; however, this has steadily declined since 1996.

More information about the burden of cancer in Florida is provided in the Florida Annual Cancer Report, an epidemiological series, available on the department's website at: www.doh.state.fl.us/disease_ctrl/epi/cancer/CancerIndex.htm, or the FCDS website at: www.fcds.med.miami.edu.

Table 1. Number of New Cancer Cases by Sex and Race, Florida, 2008

	All Cancers	Lung & Bronchus	Prostate	Breast	Colorectal	Bladder	Head & Neck	Non-Hodgkin ⁽¹⁾	Melanoma	Ovary	Cervix
Florida ²	105,207	16,339	14,391	13,749	10,199	4,817	4,162	4,125	4,002	1,498	907
Female	49,456	7,504	-	13,749	4,891	1,126	1,106	1,871	1,494	1,498	907
Male	55,634	8,812	14,391	-	5,283	3,690	3,051	2,249	2,507	-	-
Black	10,158	1,174	2,032	1,429	1,134	200	332	354	-	116	161
White	91,928	14,855	11,933	11,844	8,757	4,513	3,713	3,629	4,002	1,325	709
Black Female	4,730	411	-	1,429	573	63	88	165	-	116	161
White Female	43,157	6,949	-	11,844	4,169	1,037	996	1,641	1,494	1,325	709
Black Male	5,421	763	2,032	-	4,559	137	244	189	-	-	-
White Male	48,666	7,885	11,933	-	4,566	3,475	2,712	1,983	2,507	-	-

Source of data: Florida Cancer Data System

1 Non-Hodgkin refers to Non-Hodgkin's lymphoma throughout this report.

2 Florida incidence totals throughout this report include 1,693 new cancers in persons of "Other" races, 1,494 cases with unknown or unspecified sex, and 3 cases with unknown age. Totals by sex include cases with unknown or Other race and unknown age. Totals by race include cases with unknown sex and unknown age.

Table 2. Number of New Cancer Cases by County, Florida, 2008

	All Cancers	Lung & Bronchus	Prostate	Breast	Colorectal	Bladder	Head & Neck	Non-Hodgkin	Melanoma	Ovary	Cervix
Florida	105,207	16,339	14,391	13,749	10,199	4,817	4,162	4,125	4,002	1,498	907
Alachua	1,054	172	161	155	97	44	52	45	24	12	^
Baker	110	23	11	12	^	^	^	^	^	^	^
Bay	998	181	177	95	94	48	42	40	31	13	^
Bradford	150	27	22	19	21	^	^	^	^	^	^
Brevard	3,877	663	466	493	346	203	179	168	127	48	28
Broward	8,967	1,225	1,187	1,232	930	391	366	383	324	111	107
Calhoun	57	15	11	^	^	^	^	^	^	^	^
Charlotte	1,372	246	234	165	110	84	67	51	72	14	^
Citrus	1,294	218	208	150	110	96	54	46	53	25	^
Clay	887	162	127	102	67	49	33	41	26	10	^
Collier	2,093	250	442	237	174	111	79	76	108	32	14
Columbia	396	91	37	47	36	16	20	11	16	^	^
Miami-Dade	11,287	1,312	1,649	1,479	1,294	424	427	496	214	173	124
DeSoto	184	32	32	25	13	^	^	10	^	^	^
Dixie	86	25	10	^	^	^	^	^	^	^	^
Duval	4,252	690	630	565	390	160	176	149	140	50	42
Escambia	1,553	281	193	233	142	67	65	59	53	22	11
Flagler	674	117	67	76	61	30	25	37	38	10	12
Franklin	66	15	^	^	^	^	^	^	^	^	^
Gadsden	212	26	39	30	27	^	^	^	^	^	^
Gilchrist	92	22	14	11	^	^	^	^	^	^	^
Glades	65	12	10	10	^	^	^	^	^	^	^
Gulf	92	20	18	10	^	^	^	^	^	^	^
Hamilton	69	^	10	^	^	^	^	^	^	^	^
Hardee	123	23	14	^	15	^	^	^	^	^	^

Source of data: Florida Cancer Data System
 ^ Statistics for cells with fewer than 10 cases are not displayed.

Table 2. (Continued) Number of New Cancer Cases by County, Florida, 2008

	All Cancers	Lung & Bronchus	Prostate	Breast	Colorectal	Bladder	Head & Neck	Non-Hodgkin	Melanoma	Ovary	Cervix
Hendry	140	24	15	15	13	^	11	^	^	^	^
Hernando	1,333	266	168	140	136	57	52	53	48	26	^
Highlands	799	157	68	77	83	34	31	29	47	^	^
Hillsborough	5,883	808	804	813	575	228	244	228	200	98	65
Holmes	92	19	^	10	15	^	^	^	^	^	^
Indian River	1,084	172	131	130	101	67	51	35	77	12	^
Jackson	264	53	22	32	28	11	21	^	^	^	^
Jefferson	87	13	13	^	^	^	^	^	^	^	^
Lafayette	26	^	^	^	^	^	^	^	^	^	^
Lake	2,392	420	390	282	231	105	86	89	116	44	12
Lee	3,720	558	595	451	312	155	154	132	175	61	27
Leon	920	125	142	192	75	16	32	27	27	15	^
Levy	260	55	29	31	26	15	10	14	^	^	^
Liberty	28	^	^	^	^	^	^	^	^	^	^
Madison	111	22	17	12	11	^	^	^	^	^	^
Manatee	1,966	322	256	269	189	118	68	67	83	37	15
Marion	2,461	479	342	286	235	130	77	88	87	29	26
Martin	1,101	190	186	128	109	68	47	30	53	15	^
Monroe	397	64	43	49	40	16	23	^	24	^	^
Nassau	470	72	70	76	44	15	16	18	15	^	^
Okaloosa	950	135	104	140	92	63	38	37	47	15	^
Okeechobee	224	44	24	26	20	15	14	^	^	^	^
Orange	4,602	649	600	639	461	166	167	184	153	68	55
Osceola	1,046	134	145	139	117	42	38	34	31	18	11
Palm Beach	8,481	1,188	1,083	1,170	781	474	283	378	405	115	54
Pasco	3,032	530	413	356	296	168	103	104	141	46	19

Source of data: Florida Cancer Data System
 ^ Statistics for cells with fewer than 10 cases are not displayed.

Table 2. (Continued) Number of New Cancer Cases by County, Florida, 2008

	All Cancers	Lung & Bronchus	Prostate	Breast	Colorectal	Bladder	Head & Neck	Non-Hodgkin	Melanoma	Ovary	Cervix
Pinellas	6,017	993	637	849	597	329	277	198	247	99	44
Polk	3,841	630	526	408	415	162	140	155	187	35	35
Putnam	489	86	71	53	61	27	26	21	16	^	^
Saint Johns	989	160	161	146	84	40	40	32	46	16	10
Saint Lucie	1,584	298	189	198	144	89	43	60	62	29	11
Santa Rosa	755	131	103	128	59	27	34	26	28	^	^
Sarasota	3,145	512	472	433	257	153	118	143	143	50	23
Seminole	1,690	236	220	261	143	64	51	68	65	24	13
Sumter	855	138	173	106	69	40	31	32	34	14	^
Suwannee	234	52	18	33	18	^	^	13	^	^	^
Taylor	98	18	10	12	^	^	^	^	^	^	^
Union	194	39	24	^	23	^	20	^	^	^	^
Volusia	2,962	581	263	398	304	110	121	120	121	41	27
Wakulla	135	33	26	12	10	^	^	^	^	^	^
Walton	243	41	37	36	18	13	12	^	^	^	^
Washington	97	25	10	^	^	^	^	^	^	^	^

Source of data: Florida Cancer Data System

^ Statistics for cells with fewer than 10 cases are not displayed.

Table 3. Age-Adjusted Incidence Rates¹ by Sex and Race, Florida, 2008

	All Cancers		Lung & Bronchus		Prostate		Breast		Colorectal		Bladder							
	Rate	CI ²	Rate	CI	Rate	CI	Rate	CI	Rate	CI	Rate	CI						
Florida³	437.5	434.8	440.2	64.8	63.8	65.8	124.9	122.9	127.0	111.9	109.9	113.8	41.3	40.5	42.1	18.8	18.2	19.3
Female	388.2	384.7	391.8	54.2	53.0	55.5	-	-	-	111.9	109.9	113.8	35.6	34.5	36.6	7.8	7.4	8.3
Male	503.1	498.9	507.4	78.0	76.4	79.7	124.9	122.9	127.0	-	-	-	48.0	46.7	49.3	33.1	32.1	34.2
Black	436.5	427.7	445.4	54.1	51.0	57.5	208.5	199.0	218.4	103.4	98.0	109.1	50.6	47.6	53.8	10.1	8.7	11.6
White	432.7	429.8	435.6	65.6	64.6	66.7	114.9	112.8	117.0	111.1	109.0	113.2	39.6	38.7	40.5	19.5	18.9	20.1
Black Female	354.4	344.1	364.9	33.3	30.0	36.7	-	-	-	103.4	98.0	109.1	44.4	40.7	48.3	5.4	4.1	6.9
White Female	388.1	384.2	392.0	56.5	55.1	57.9	-	-	-	111.1	109.0	113.2	33.9	32.8	35.0	8.0	7.5	8.6
Black Male	555.9	540.1	572.1	83.9	77.7	90.7	208.5	199.0	218.4	-	-	-	59.7	54.4	65.4	17.2	14.2	20.6
White Male	492.2	487.7	496.6	77.1	75.4	78.8	114.9	112.8	117.0	-	-	-	46.1	44.8	47.5	34.2	33.1	35.4

Source of data: Florida Cancer Data System

1 Rates are expressed as number of cases per 100,000 population per year, adjusted to the 2000 U.S. standard population.

2 95% confidence interval.

3 Florida incidence rates throughout this report include 1,693 new cancers in persons of "Other" races, 1,428 cases with unknown race and 117 cases with unknown or unspecified sex. Rates calculated by sex include cases with unknown or other race. Rates by race include cases with unknown sex. By definition, age-adjusted incidence rates cannot include the 3 cases with unknown age.

Table 3. (Continued) Age-Adjusted Incidence Rates¹ by Sex and Race, Florida, 2008

	Head & Neck			Non-Hodgkin			Melanoma			Ovary			Cervix		
	Rate	CI ²	Rate	Rate	CI	Rate	Rate	CI	Rate	Rate	CI	Rate	Rate	CI	
Florida³	17.5	16.9	18.0	17.5	17.0	18.1	20.0	19.4	20.7	11.9	11.3	12.6	9.2	8.6	9.8
Female	8.6	8.1	9.2	14.4	13.8	15.1	15.2	14.4	16.1	11.9	11.3	12.6	9.2	8.6	9.8
Male	27.6	26.7	28.7	21.2	20.3	22.1	26.3	25.2	27.3	-	-	-	-	-	-
Black	13.3	11.9	14.9	14.6	13.1	16.3	-	-	-	8.8	7.2	10.6	11.3	9.6	13.3
White	17.8	17.2	18.4	17.3	16.8	17.9	20.0	19.4	20.7	12.2	11.5	12.9	8.9	8.2	9.6
Black Female	6.3	5.0	7.8	12.1	10.3	14.1	-	-	-	8.8	7.2	10.6	11.3	9.6	13.3
White Female	8.8	8.3	9.4	14.2	13.5	15.0	15.2	14.4	16.1	12.2	11.5	12.9	8.9	8.2	9.6
Black Male	22.7	19.8	26.1	18.2	15.5	21.4	-	-	-	-	-	-	-	-	-
White Male	27.9	26.9	29.0	21.0	20.0	21.9	26.3	25.2	27.3	-	-	-	-	-	-

Source of data: Florida Cancer Data System
 1 Rates are expressed as number of cases per 100,000 population per year, adjusted to the 2000 U.S. standard population.
 2 95% confidence interval.
 3 Florida incidence rates throughout this report include 1,502 new cancers in persons of "Other" races, 1,697 cases with unknown race and 90 cases with unknown or unspecified sex. Rates calculated by sex include cases with unknown or other race. Rates by race include cases with unknown sex and age.

Figure 1. New Cases and Age-Adjusted Incidence Rates for All Cancers by Sex and by Race, Florida, 1981-2008

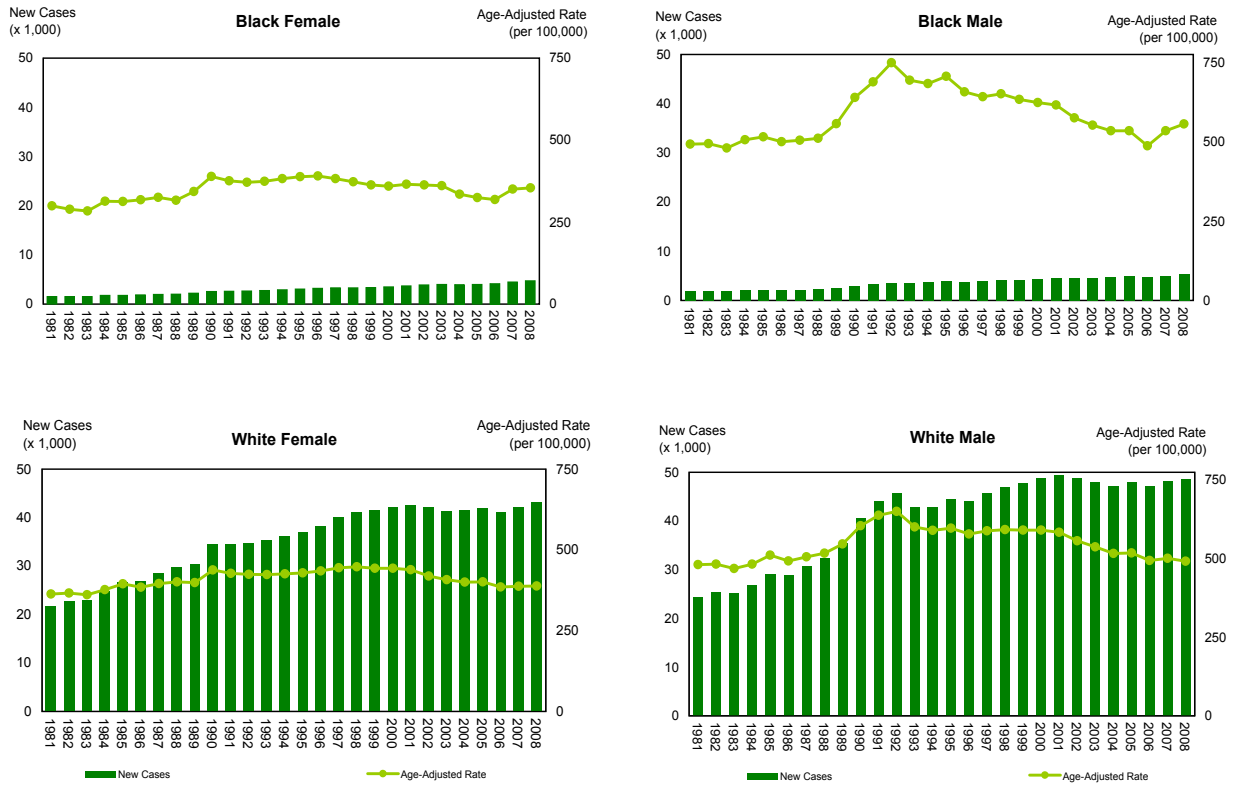
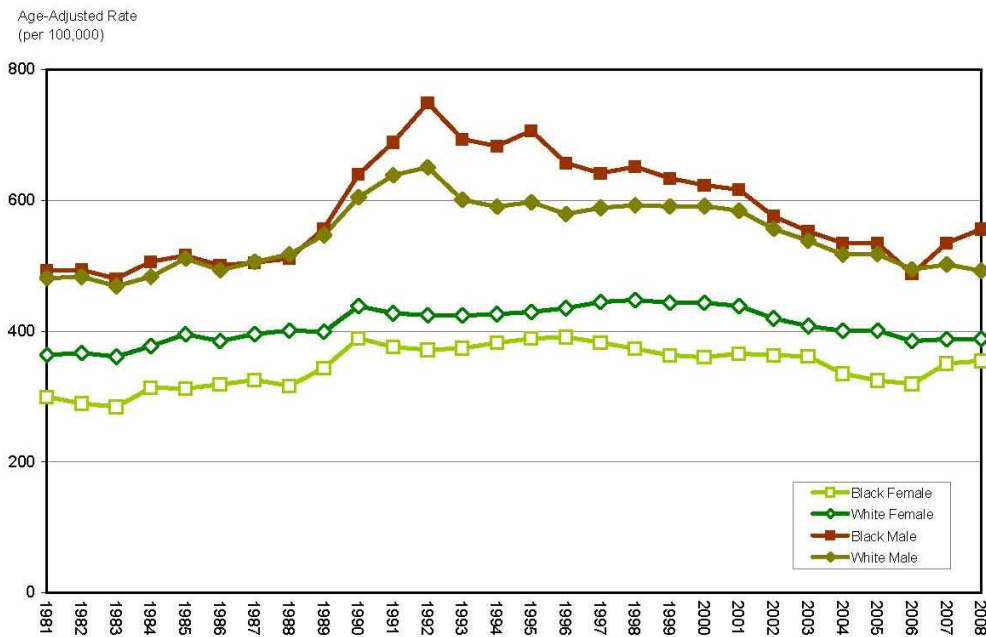
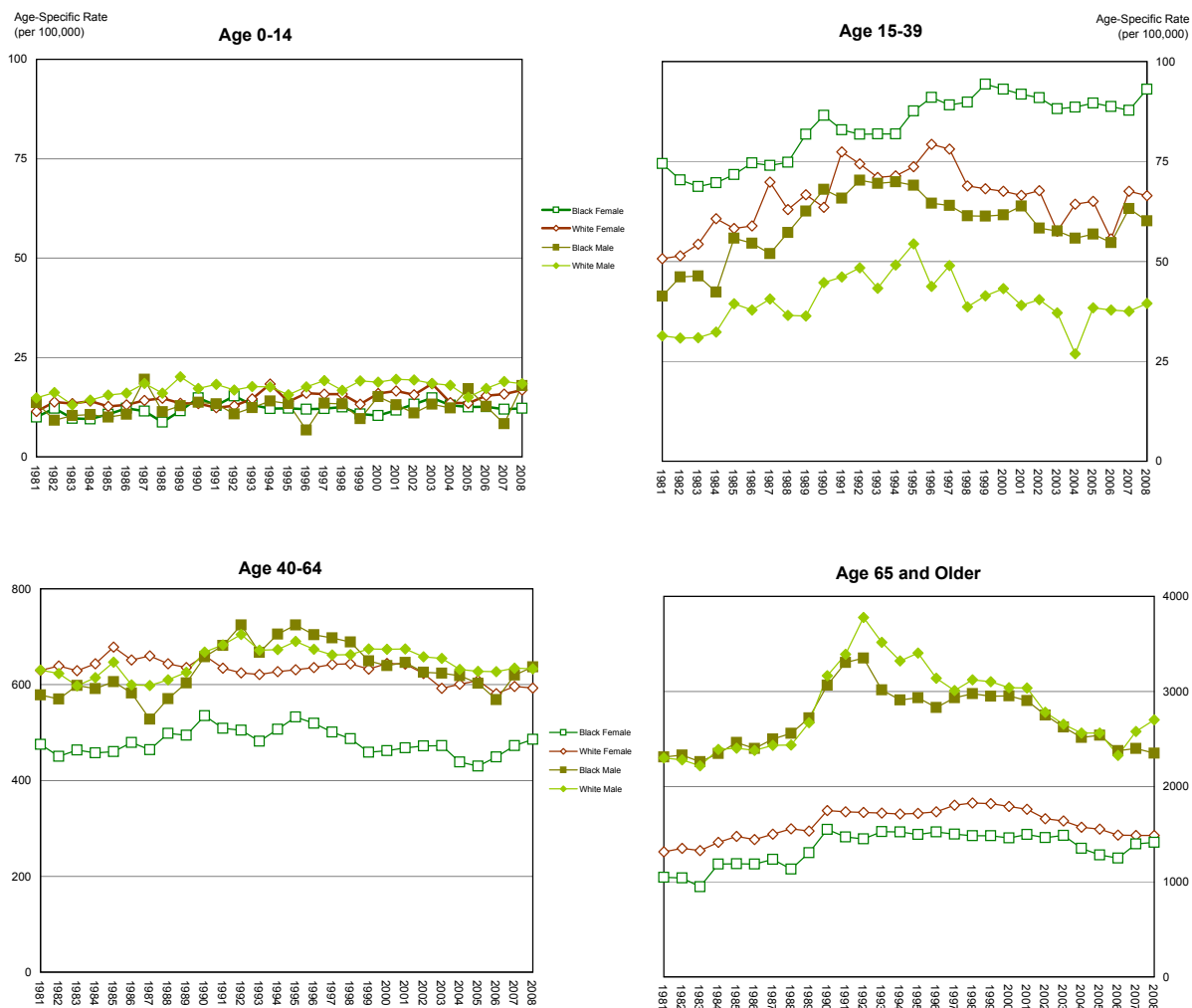


Figure 2. Age-Adjusted Incidence Rates for All Cancers by Sex and by Race, Florida, 1981-2008



Source of data: Florida Cancer Data System

Figure 3. Age-Specific Incidence Rates for All Cancers by Sex, Race, and Age Group, Florida, 1981-2008



Source of data: Florida Cancer Data System

