

2023- 2028

Sumter County

Community Health Needs Assessment



Letter from the Florida Department of Health in Sumter County

To the Sumter County Community,

In 2023, the Florida Department of Health in Sumter County launched a major initiative to better understand the health needs of the community and develop programs and policies to address these needs. This process included conducting a Community Health Needs Assessment (CHNA) to provide a portrait of the community's health and developing a Community Health Improvement Plan (CHIP) to identify areas of action. This collaborative, participatory community health needs assessment-community health improvement plan process has several overarching goals, including:

- 01 Complete a comprehensive CHNA that will identify Sumter County's strengths and challenges in providing a healthy environment for all residents and workers.
- 02 Develop a CHIP that will serve as a blueprint for improving the health of the County over the next five years.
- 03 Engage partners, organizations, and individuals in creating a vision for a healthy Sumter County and making that vision a reality.

This document presents the findings of the County's CHNA, per the first goal of this process, which examined the current health status of Sumter County and explored the health-related challenges, experiences, and priorities of residents within the social context of our community.

The 2023-2028 CHNA highlights health disparities and priority issues which need to be addressed. Thank you to our community partners for participating and providing valuable insights to collaboratively improve public health across the county. We hope you find this community health assessment informative and useful as we work together on specific issues, programs, campaigns, and achievements that impact their community.

Won't you join us? To learn more about how to engage, email AskSumter@FLhealth.gov or visit Sumter.FLHealth.gov.

Sincerely,

Sanford D. Zelnick

**Sanford D. Zelnick, D.O., M.S., Director
Florida Department of Health in Sumter County**

Table of Contents

Executive Summary -----	03
Introduction -----	05
Methodology -----	11
Community Status Assessment -----	13
Community Partner Assessment -----	21
Community Context Assessment -----	27
Conclusions -----	30
Identified Priority Health Issues & Behaviors -----	31
Community Resources -----	33



EXECUTIVE SUMMARY

Florida Department of Health in Sumter County (DOH-Sumter) began the work in 2023 to facilitate the creation of a new community health assessment for Sumter County. This broad-based collaborative has engaged key stakeholders throughout the county and is a collective impact effort that seeks to apply the following principles in the work:

- Provide a common agenda
- Establish shared measurements, foster mutually reinforcing activities
- Encourage continued communication
- Build strong community support across multiple sectors including health, business, education, faith, non-profit, government, and civic partners.

The CHNA provides the first goal of this process, which examines the current health status of Sumter County residents and explores the local health-related challenges, experiences, and priorities within the social context of their community. The CHNA utilizes a participatory, collaborative approach to look at health in its broadest context, specifically the larger social and economic factors that have an impact on health as well as how these characteristics disproportionately affect certain populations. The CHNA methods include the Mobilizing for Action through Planning & Partnerships (MAPP) 2.0 process. The MAPP 2.0 process addresses authentic community engagement, sustained partner engagement, and action and impact.

DOH-Sumter partners recognized the increasing demand for collaboration and partnership to prioritize health throughout the county. Every five years, community organizations in Sumter County work collaboratively on a two-step process to understand and respond to health problems within our community. The first phase of this process involves identifying local health issues and resources through a Community Health Needs Assessment (CHNA). The second phase, which will launch in 2024, will outline the actions that the community will take to improve the health status of residents. An overview of the Community Health Improvement Plan (CHIP) is provided in the “Next Steps” section. A CHNA examines the health of community residents and answers the questions:

For questions, concerns or comments regarding this report, please contact
AskSumter@FLHealth.gov.

1

What are the top causes of death in the community?

2

What health issues and behaviors are most concerning to local residents and community leaders?

3

What resources exist for residents to obtain better health?

The CHNA is a year-long community-wide undertaking. Health, business, social service, education, and faith organizations across Sumter County provided guidance and input by serving on a CHNA Team. Community residents participated through online and paper surveys. Community stakeholders were engaged through solicitation of feedback and comments from presentations of the findings. The culmination of this first phase is the publication and distribution of this 2023 CHNA report.

Conclusions



INTRODUCTION

What is a Community Health Needs Assessment (CHNA)?

The CHNA is an ongoing process of systematic collection, assembly, analysis, and distribution of information on the health needs of the community. Our community's CHNA process was facilitated by the Ascendant Healthcare Partners, with DOH-Sumter, area health providers, educational institutions, area health coalitions, nonprofit organizations, and others.

Improving the health of the community is essential to enhancing its residents' quality of life and supporting its future economic and social well-being. To effectively improve health, communities must address social, environmental, and behavioral factors in addition to ensuring access to medical services.

The mission for this project was to support and promote collaborative initiatives that address identified priority health challenges. The data collected for the CHNA includes both resident perceptions of and statistics concerning health status, community health needs, gaps, challenges, and assets. This report will be shared with key stakeholders and the community at large with the goal of mobilizing community members to work collaboratively towards building a healthier community.

The report was written to compile various indicators including demographic, socioeconomic, and health behaviors that do or could potentially impact health outcomes in Sumter County. By implementing policies and aligning programs and resources targeting these health factors, we can improve the health of the community. This requires broad community progress made between the 2018 and 2023 CHNA.

Ultimately, the collaboration included healthcare providers and public health officials, as well as many others in the community. With input from community residents and leaders we can narrow the health issues to a manageable set of priorities. This assessment is the product of an ongoing comprehensive strategic approach to community health improvement. The CHNA process was conducted under the direction of the DOH-Sumter and facilitated by Ascendant Healthcare Partners, a healthcare consulting firm.

The following pages summarize the findings of a yearlong process to investigate the health of people residing in Sumter County and the underlying demographic, social, economic, and environmental factors that impact health. We encourage individuals and organizations to use this information to work together to reduce premature death and illness and to make our community a healthier place to live, work, and play.

Special Consideration - COVID-19

In late 2019, the virus SARS-CoV-2 was identified overseas and eventually led to the deadly COVID-19 pandemic. The virus spread very quickly and claimed millions of lives globally. By March 2020, the nation and world employed pandemic measures of lockdowns to curb the virus' spread. The impacts of COVID-19 were severe, widespread, and went beyond the loss of life. COVID-19 affected the health of all communities, leaving no area unaffected. The contributing factors to health inequity were also exposed, resulting in clearly identified areas for improvement that the community can address.

Sumter MAPP Steering Committee

Created in 2011 as an evolution of the Community Health Assessment, the Sumter MAPP Steering Committee is a collective impact initiative created to unite and align resources to improve health equity and outcomes of the residents of Sumter County. The Sumter MAPP Steering Committee works by engaging businesses, civic leaders, non-profit, healthcare providers, education partners, and faith-based organizations across the county to identify a common agenda; establish shared measurements; foster mutually reinforcing activities; and encourage continued communication. The Sumter MAPP Steering Committee collaborative will continue to conduct the needs assessment every five years to assess progress and direct actions toward meeting the vision of every Sumter County resident living well and thriving. We would like to recognize our 2023 members with the Sumter MAPP Steering Committee for their contributions to our collective impact effort:

2023 MAPP Steering Committee Members

Florida Department of Health in Sumter County

Lake-Sumter State College

UF Health The Villages Regional Hospital

Wildwood Rotary

Langley Health Services

Sumter County Fire and EMS

Sumter County Board of County Commissioners

Florida Department of Children and Families

Nature Coast Early Learning Coalition

Sumter County Chamber of Commerce

Sumter County Residents

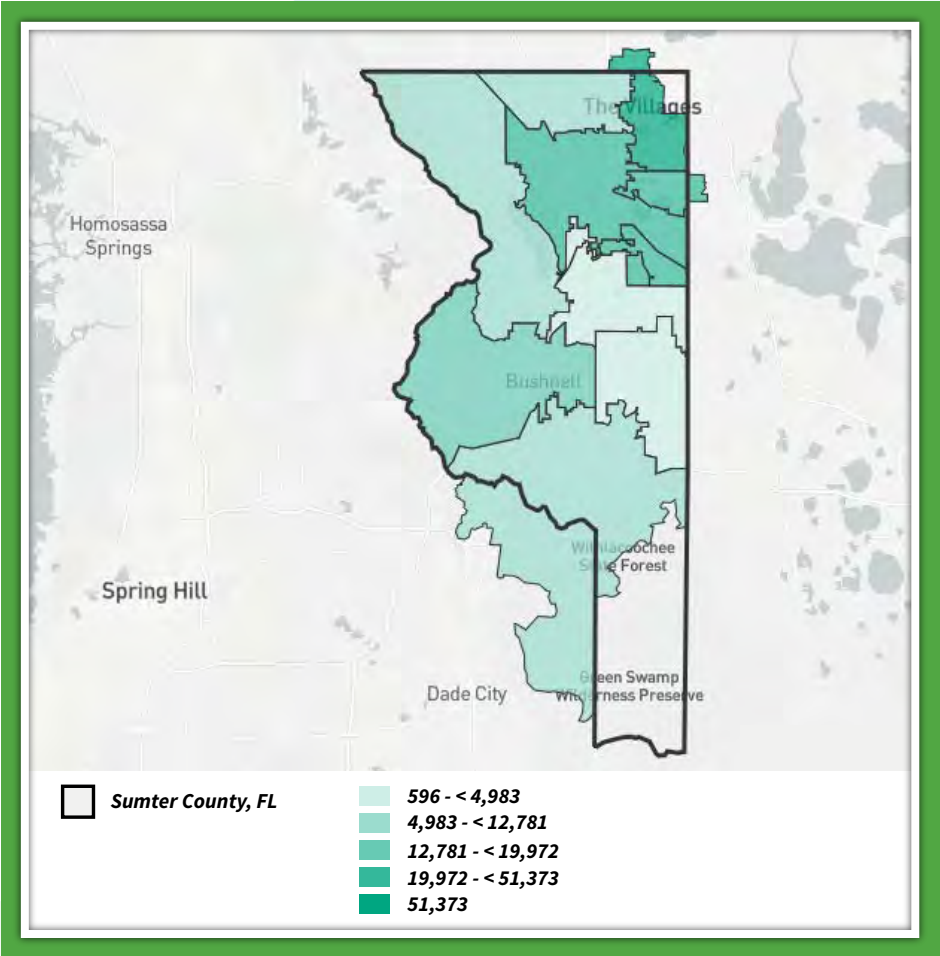
The Villages Public Safety Department

Mid Florida Homeless Coalition

Vision: Be Florida's Healthiest County.

Community Profile

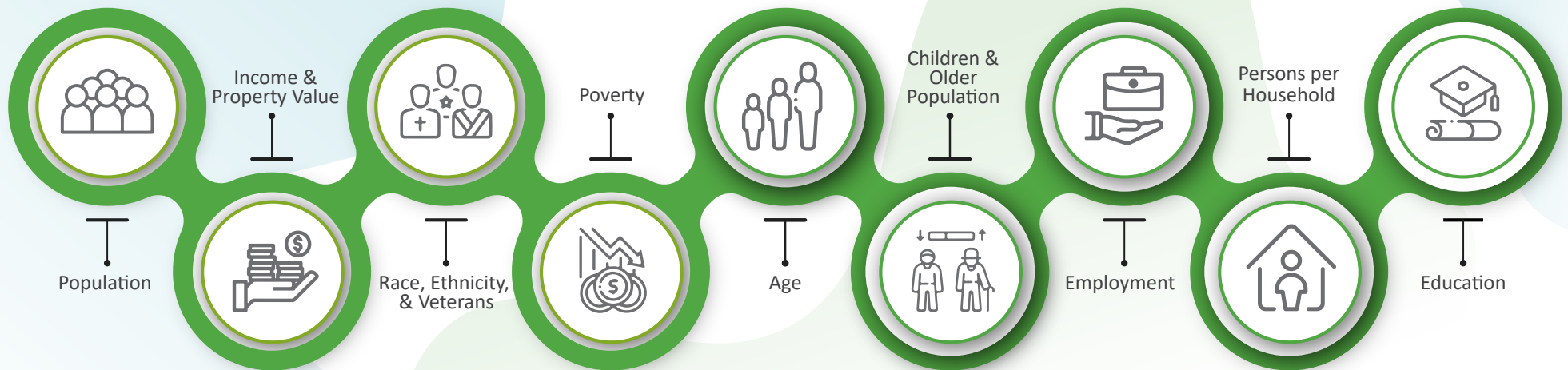
Sumter County is in the central portion of the State of Florida. Sumter County has 557.1 square miles of land area and is the 51st largest county in Florida by total area. Sumter County, Florida is bordered by Pasco, Marion, Citrus, Polk, Lake, and Hernando Counties. In 2023, Sumter County had a population of 131,832 people with a median age of 68.1 and a median household income of \$70,105.



Sources: US Census Bureau ACS 5-year 2018-2022

In this community, there are different neighborhoods with varying populations. In the neighborhood with the highest population, there are over **52,700** people. On the other hand, in the neighborhood with the lowest population, there are only around **788** people. These population differences can impact the community in various ways. In neighborhoods with higher populations, resources may be in higher demand, such as schools, health-care facilities, and public services. This can put pressure on existing infrastructure and potentially lead to longer wait times and limited access to these essential resources. Neighborhoods with lower populations may have fewer resources available. It may be more challenging for residents to access amenities, services, and opportunities. Understanding these population differences is crucial for community leaders and policymakers to identify areas where additional resources and support may be needed, ensuring that all residents have an equitable and inclusive experience in the community.

This CHNA report is intended to present who we are as a community, including the influence of socioeconomic and demographic variables on our health. All these factors collectively impact the health of county residents. The following demographics are presented to provide a profile of the county:



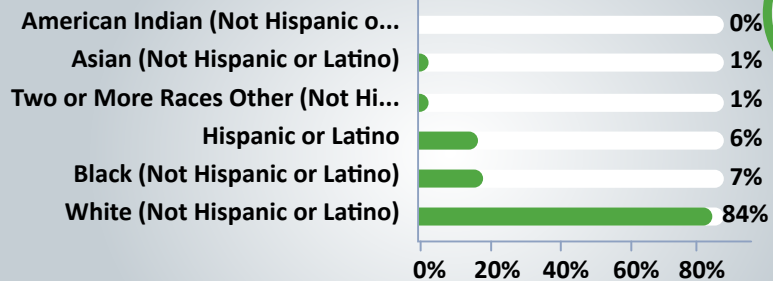
POPULATION

In Sumter County, Florida, there is a unique distribution of population across different age groups. Sumter has the highest median age of any county in the United States of America, at **68.3** (Source: ACS). The data from the US Census Bureau ACS 5-year survey for 2018-2022 shows that the largest age group in Sumter County is individuals between **65** and **74** years old, accounting for **31.6%** of the population. This indicates that Sumter County has a significantly older adult population. The second largest age group includes people **aged 75** and over, accounting for **21.1%** of the population.

Understanding the impact of generations is crucial. Sumter County's demographic trends show that there is both an increase in the older population and a decrease in younger age groups. This suggests that the county may be experiencing issues related to an aging workforce and potential strains on healthcare and social services. According to the US Census Bureau ACS 5-year survey for 2018-2022, Sumter county has the lowest percentage of population that are in the labor force (**24.5%**) compared to the rest of Florida counties (Florida average=**52.31%**).

These insights into Sumter County's age totals and generational impact can be valuable for community leaders and policymakers. By understanding the age distribution, they can better plan for the needs of the population, such as healthcare services for older adults and programs that support intergenerational connections. It is essential to address the unique challenges and opportunities that come with an aging population to ensure the well-being and inclusivity of all residents in Sumter County.

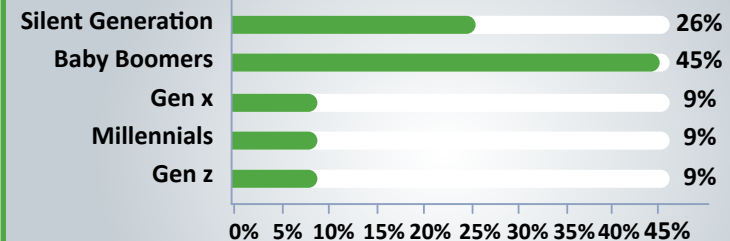
Race Ethnicity Totals



Sumter County, FL

Sources: US Census Bureau ACS 5-Year 2018-2022

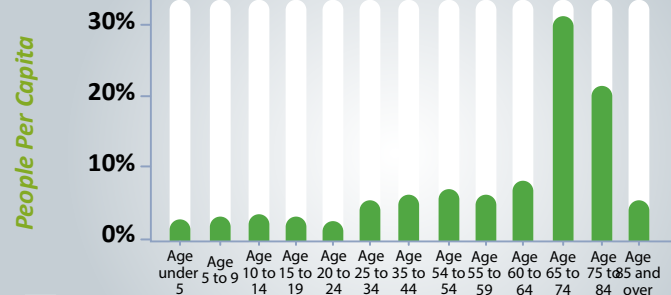
Generations



Sumter County, FL

Sources: US Census Bureau ACS 5-Year 2018-2022

Total Age



Sumter County, FL

Sources: US Census Bureau ACS 5-Year 2018-2022

Veteran Residents: 18,659

MEDIAN AGE

68.3 years

Sumter County, FL

42.4 years

Florida

Sources: US Census Bureau ACS 5-year 2018-2022

Children and Older Population

CHILDREN

7%

population Under Age 18

Sumter County, FL

20%

population Under Age 18

Florida

Sources: US Census Bureau ACS 5-year 2018-2022

SENIORS

57%

population Age 65 and Over

Sumter County, FL

20%

population Age 65 and Over

Florida

Sumter County, with an average household size of **1.93 people**.

Income

\$25,150

Per Capita Income (2010)

Sumter County, FL

\$44,431

Per Capita Income (Current)

Sumter County, FL

\$46,301

Median Household Income (2010)

Sumter County, FL

\$70,105

Median Household Income (Current)

Sumter County, FL

Income Spent on Housing and Transportation

56.9%

of income for median income families

Income Spent on Housing and Transportation (2012)

Sumter County, FL

Sources: US HUD & DOT LAI V2.0 2012; US HUD & DOT LAI V3.0 2016

58.1%

of income for median income families

Income Spent on Housing and Transportation (Current)

Sumter County, FL

Employment

30,279

Labor Force Population

Sumter County, FL

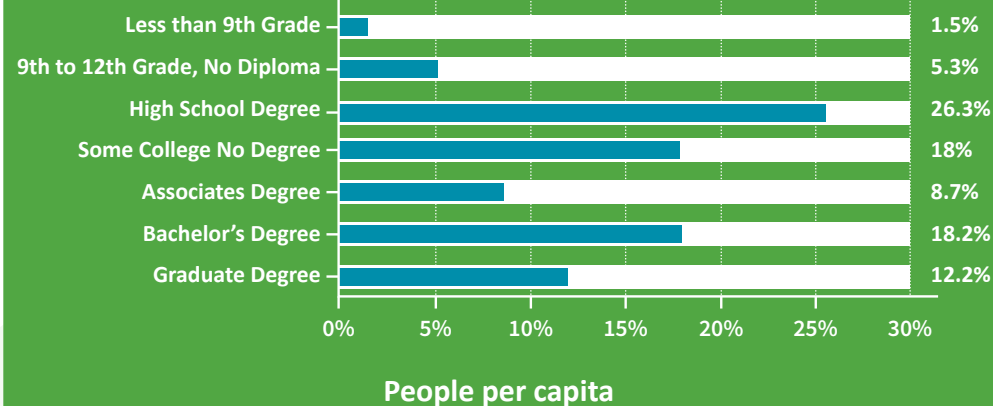
Sources: US Census Bureau ACS 5-year 2018-2022

5.1%

Unemployment Rate

Sumter County, FL

Highest Educational Attainment

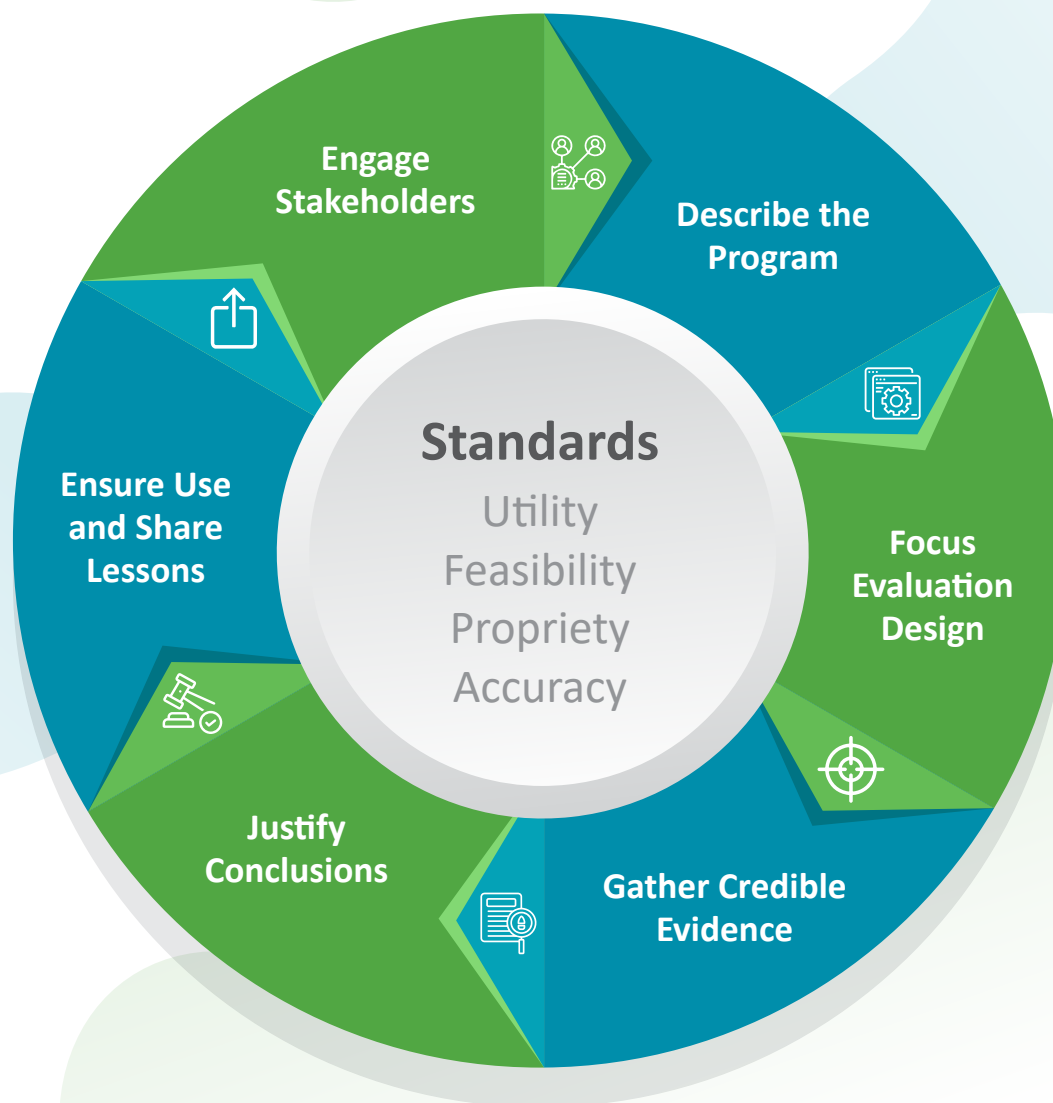


Sources: US Census Bureau ACS 5-year 2018-2022



METHODOLOGY

Many health and community organizations in our area are required by accrediting bodies or regulatory agencies to conduct periodic Community Health Needs Assessments to retain accreditation. The Florida Department of Health must assess health status within each county every five years.



In 2015, the Centers for Disease Control and Prevention (CDC) recommended communities adopt a “unified community health improvement framework supporting multiple stakeholders.” The CDC’s approach encourages hospitals, health departments and other community organizations to work together to identify and address community health needs. This collaborative approach was embraced by the Sumter MAPP Steering Committee for the 2023 CHNA. To achieve a unified community health improvement framework, a methodology was adopted that would meet the accrediting and/or regulatory requirements of all participants.

The methodology for the 2023 CHNA process was based on processes recommended by the National Association of City and County Health Officials’ (NACCHO) Mobilizing for Action through Planning and Partnership (MAPP) 2.0 strategic planning model.

MAPP 2.0 process uses three phases to address authentic community engagement, sustained partner engagement, and action and impact. The three phases are the Community Partner Assessment, the Community Status Assessment, and the Community Context Assessment.

Facilitated by public health leaders, this framework helps communities apply strategic thinking to prioritize public health issues and identify resources to address them. MAPP 2.0 is not an agency-focused assessment process; rather, it is an interactive process that can improve the efficiency, effectiveness, and ultimately the performance of local public health systems.

The CHNA provides the first goal of this process, which examines the current health status of Sumter County residents and explores the health-related challenges, experiences, and priorities within the social context of our community.

This CHNA provides local-level health-related data about Sumter County. The CHNA utilizes a participatory, collaborative approach to look at health in its broadest context, specifically the larger social and economic factors that have an impact on health as well as how these characteristics disproportionately affect certain populations.

After facing a pandemic that challenged our community and brought awareness to the inequities faced by specific populations, the CHNA plays a very critical role. Through collective impact, our CHNA members, organizations, and stakeholders were able to address timely issues and begin to seek the causes of this inequity.

COMMUNITY STATUS ASSESSMENT

Community Health Framework

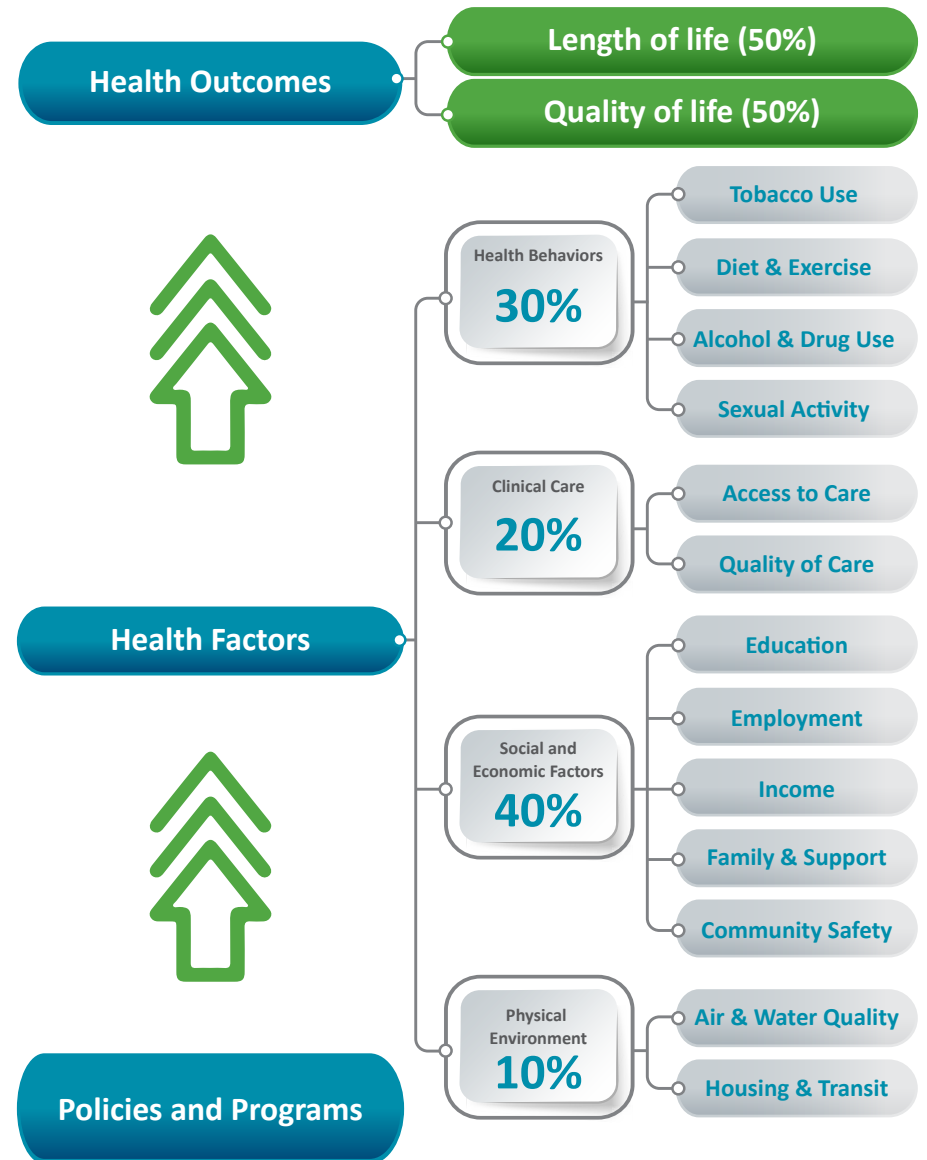
Health is more than just the absence of illness or disease. Health is influenced by many other factors including healthcare services, treatment, medications, physical environment, social factors, economic factors, and by our own behaviors. Factors such as education level, safety of the neighborhood, air quality, housing conditions, poverty, and employment can have a positive or negative impact on our health. These factors are called the **social determinants of health** (SDOH).

The County Health Ranking and Roadmaps was developed by the Robert Wood Johnson Foundation and the University of Wisconsin Population Health Institute (UWPHI) to measure health within a community by looking at SDOH, access to and quality of health care, and personal health behaviors. The framework illustrates the strong influence that health factors and health outcomes have on illness and death.

Health Factors are the things that can be modified to improve the length and quality of life for community members.

Health Outcomes represent the overall health of a county, reflecting the physical and mental well-being of residents measured by length of life and quality of life. Health outcomes are predictors of how healthy our communities can be in the future.

Policies and Programs such as smoking ordinances or a diabetes prevention program hosted by a hospital or health department, can improve health factors, and thus lead to lower rates of disease and better health outcomes.



Source: University of Wisconsin Population Health Institute. County Health Rankings & Roadmaps 2023. www.countyhealthrankings.org

The County Health Rankings are based on a model of population health that emphasizes the many factors that, if improved, can help make communities healthier places to live, learn, work and play. The Sumter MAPP Steering Committee has adopted the County Health Rankings framework. This CHNA looks first at causes of death, disease, and disability in our community, then the health outcomes to understand those causes. The health factors that could be changed to improve our health and have an impact on health outcomes are presented. The health outcomes and health factors provide a snapshot of our community health status.

Health Equity According to the U.S. Department of Health and Human Services, “health equity is the attainment of the highest level of health for all people.” The CDC states that “Population-level factors, such as the physical, built, social, and policy environments, can have a greater impact on health outcomes than individual-level factors. The root causes of health inequity can be directly linked to a failure to address these population-level factors. In addition, linkages between science, policy, and practice are critical to achieving health equity.”

According to the CDC, the momentum to address social determinants of health (SDOH) and health equity has increased over the last decade. Research and national initiatives support the implementation of policies and programs that address SDOH to reduce health disparities, which are the differences in health outcomes and their causes among groups of people.

The World Health Organization states “There is ample evidence that social factors, including education, employment status, income level, gender and ethnicity have a marked influence on how healthy a person is. In all countries – and incomes – there are wide disparities in the health status of different social groups.

The lower an individual’s socioeconomic position, the higher their risk of poor health. Health inequities are reflected in differences in length of life; quality of life; rates of disease, disability, and death; severity of disease; and access to treatment.”

Health inequity affects many populations, including minorities, women, and children of various backgrounds. The COVID-19 pandemic had many significant impacts on public health. One of the major results was the exposure of health inequities across U.S. communities. The pandemic also helped to reveal the contributing factors to health inequity, identifying areas that can be addressed by community leaders. The CHNA report addresses some of the health equity issues so that the root causes can be addressed.

The Community Status Assessment (CSA) informs MAPP and collects quantitative data on the status of our community such as demographics, health status, and health inequities. The CSA helps a community move “upstream” and identify inequities beyond health behaviors and outcomes, including their association with social determinants of health and systems of power, privilege, and oppression. The CSA is a community-driven assessment to help tell Sumter County’s community story. This was done by collecting data using primary and secondary data collection which included mySidewalk and FLHealthCHARTS.

LEADING CAUSES OF DEATH

SUMTER COUNTY

FLORIDA

1. Cancer

1. Heart Disease

2. Heart Disease

2. Cancer

3. Unintentional Injury

3. Unintentional Injury

4. COVID-19

4. Stroke

5. Diabetes Mellitus

5. COVID-19

6. Stroke

6. Chronic Lower Respiratory Disease (CLRD)

7. Suicide

7. Diabetes Mellitus

8. Chronic Lower Respiratory Disease (CLRD)

8. Alzheimer's Disease

9. Alzheimer's Disease

9. Suicide

10. Chronic Liver Disease & Cirrhosis (CLDC)

10. Chronic Liver Disease & Cirrhosis (CLDC)

Florida Charts 2022



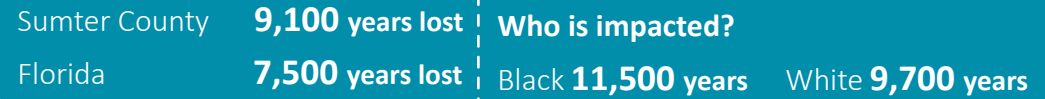
Health Outcomes

According to the 2020 Florida County Health Rankings report, Sumter County is ranked 22nd out of 67 counties in Florida.



Length of Life

Premature Death: Measured as years of potential life lost and tracked for every death before the age of 75. This is used to measure preventable deaths.



Quality of Life Years

Child Mortality in Sumter County was 90 deaths per 100,000 children under age 18.

Who is impacted?

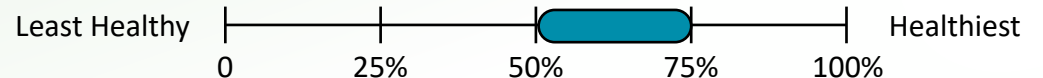
In Sumter County Black children (<18) have a 3 times higher mortality rate than White children.

Infant Mortality in Sumter County, there were **11** deaths among children less than 1 year of age per **1,000** live births.



Health Factors

Many things influence how well and how long we live. Health factors represent those things we can improve to live longer and healthier lives. They are indicators of the future health of our communities. Sumter County ranks in the higher middle range when compared to other counties in Florida.



HEALTH BEHAVIOR

	Sumter	FL
Adult Smoking	18%	16%
Adult Obesity	34%	28%
Sexually Transmitted Infections	136.7 *	465.7 *
Excessive Drinking	21%	17%
Teen Births	38 **	18 **

*Number of new cases of chlamydia diagnosed per 100,000 people.

**Number of births per 1,000 female population ages 15-19.

CLINICAL CARE

	Sumter	FL
Uninsured	12%	15%
Preventable Hospital Stays	3,041*	3,186*
Mammography Screenings	51% **	40% **
Flu Vaccinations	55%	49%
Mental Health Providers	1,940:1	510:1

*Rate of hospital stays for ambulatory-care sensitive conditions per 100,000 Medicare enrollees

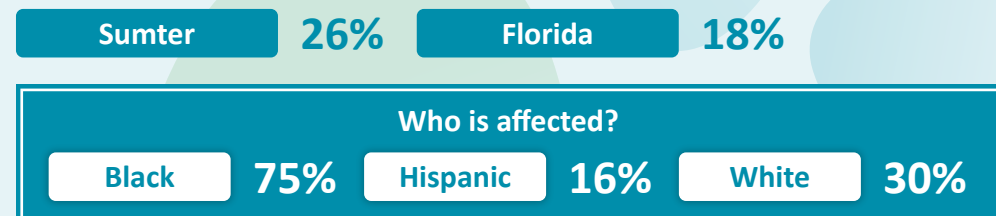
**Percentage of female Medicare enrollees ages 65-74 that received an annual mammography screening.

SOCIAL & ECONOMIC FACTORS

	Sumter	FL
High School Completion	92%	89%
Some College	41%	64%
Injury Deaths	128*	87*

*Injury deaths include homicides, suicides, unintentional falls, motor vehicle crashes and poisonings, per 100,000 people. This number is mostly attributed to unintentional falls in Sumter County.

Children Living in Poverty



Physical Environment

Pollution Particulate Matter* **Sumter 8.0** **Florida 7.8**

*The Environmental Protection Agency (EPA) has primary annual average standards of 12.0 micrograms per cubic meter.

Violent Crime In 2022, the rate per 100,000 of Violent Crime in **Sumter County** was **82.7** compared to **Florida** at **150.6**



Source: University of Wisconsin Population Health Institute. County Health Rankings & Roadmaps 2023. www.countyhealthrankings.org.

COMMUNITY PERCEPTIONS AND THEMES

CHNA

The main focus of CHNA is to improve the quality of life for all and to collectively design solutions that focus on sub-populations and sub-geographies of our community. DOH-Sumter is tasked with aligning resources within the community to help improve health outcomes for Sumter residents.

The Sumter MAPP Steering Committee, which consists of the health department, nonprofits, and other agencies, set out to better understand the health needs of all residents in Sumter County, including those whose voices are often underrepresented. To gather input from the community, the MAPP Steering Committee will conduct a CHNA that is updated every five years. Gathering community input on their perception of health issues, concerns, and health services are a major portion of the CHNA. Trying to capture the voices of those we are intending to impact with policy and programs was a key driver for the process of conducting the survey and analyzing the results. Two versions of the CHNA were administered – the CHNA Community Resident Survey and the CHNA Community Partner Survey.

DATA ANALYSIS SOURCES & METHODOLOGY

The primary data source for this CHNA was the health survey of Sumter County residents conducted in the summer of 2023. The survey items were reviewed by the DOH-Sumter Performance Management Council and vetted for content. The result of the collaborative effort was a 21-item survey that was distributed in electronic and paper format. In total, 473 community members participated in the resident survey.

DATA COLLECTION AND WEIGHTING

Sumter's data is based on the participants' home zip code. The zip code zones allow better understanding of the needs of specific communities. They would also provide area officials and stakeholders with more tailored information to inform their decision making and policy work and to provide results which reflected the opinions and needs residents throughout Sumter County.

In an attempt to provide results which reflected the opinions and needs of residents, the completed surveys were layered by gender, race, and ethnicity.



CHNA Community Resident Survey

The data analysis for the CHNA Community Resident survey was conducted by Ascendant Healthcare Partners. The consulting group provides community and leadership research for counties and states. The data analysis from the Ascendant Healthcare Partners included weighting for underrepresented voices.

The CHNA Community Resident Survey was available in digital format and in hard copy. The link to the survey was promoted in the media and was shared through many agencies and organizations. Hard copies of the survey were also provided at various rural sites and civic meetings throughout Sumter County.

The Sumter MAPP Steering Committee included more diverse respondents to the CHNA Community Resident Survey by partnering with organizations like Sumter County Library and churches to help get the word out about the survey. These impacted residents are groups of people who have been historically marginalized through systemic and social factors. These groups are often noted in research to have higher sickness and death rates than other groups, for this document we will be referring to them as “groups placed at increased risk.” Outreach efforts were made to obtain the perceptions of groups placed at increased risk, such as low income, minority, and health care insecure residents (shown in the table).

An effort was also made to include individuals from a broad cross-section of the population. The CHNA Community Resident Survey was sent to Sumter MAPP Steering Committee members with a request that they reach out to community groups, churches, friends, family, coworkers, clients, and patients that live or work in Sumter County. Sumter County respondents believe a healthy community has a quality healthcare system, low crime with safe neighborhoods, and safe and healthy homes. The top three health concerns were high blood pressure, obesity, and mental health.

The top five health issues of concern were obesity, affordable healthy housing, living wage, food insecurity, and drug & alcohol use. The following sections highlight the responses for key areas of the CHNA Community Resident survey.



**Perceived
Community**



**Perceived Health
Issues**



**Behaviors of
Concern**



**Difficult to Find
Care or Problems
Acquiring Care**

COMMUNITY HEALTH

Prompt: “I think my County is a healthy place in which to live, work, or spend time.”

When asked how residents would rate their agreement with the prompt, the majority (71%) noted “Agree” or “Strongly Agree”.

Groups Placed at Increased Risk: Black respondents were more likely to report lower levels of overall community health. Higher household income was significantly associated with higher perception of overall community health.

IMPORTANT HEALTH ISSUES

Question: What do you think are the most important health issues in your community?

The highest health concerns in Sumter were heart disease or stroke, diabetes, and mental health, and access to healthcare.

Groups Placed at Increased Risk: In Sumter County there are 17.4% of residents living with long term disabilities, including physical, mental, or learning disabilities.

BEHAVIORS OF CONCERN

The highest health behavior concerns in Sumter were overweight or obesity, lack of physical activity and nutrition, drug use, and drug and tobacco abuse.

Groups Placed at Increased Risk: In Sumter County, 34% of residents are obese and 21% are excessive drinkers, both are higher than State averages. 21% of residents are physically inactive, which is 4% lower than State averages.

Difficult to Find Care or Problems Acquiring Care

Question: In the past 2 years, which of the following issues have made it difficult or prevented you from getting medical, dental, or mental health services for you or your family?

Respondents indicated timeliness of care such as the wait to get an appointment was too long and doctors not taking new patients were the top reasons residents did not obtain healthcare. This was followed by quality of care and doctors not taking their insurance. It is important to note that there are many different services people may be considering for the elderly and specialty medical care, from adult day cares to assisted living for the elderly and orthopedists to urologists for specialty care. The primary areas for having availability issues in Sumter County were primary care, dentists, and mental health services.

Medical care of residents was not impacted by 34% of respondents during COVID-19. Although 27% experienced a delay in a routine hospital visit.

Groups Placed at Increased Risk: In Sumter County, 12% of residents under the age of 65 and 7% of children did not have health insurance. Lack of health insurance is linked to less access to care and more negative care experiences. Hispanics and Blacks are most at risk of being uninsured.

RESPONDENT DEMOGRAPHICS

AGE

As of 2022, these are the ages, race, and ethnicity of residents in Sumter County.

Male

37%

Female

63%

18-24

2%

25-34

7%

35-44

6%

45-54

10%

55-64

17%

65-80

46%

81-90

12%

RACE AND ETHNICITY

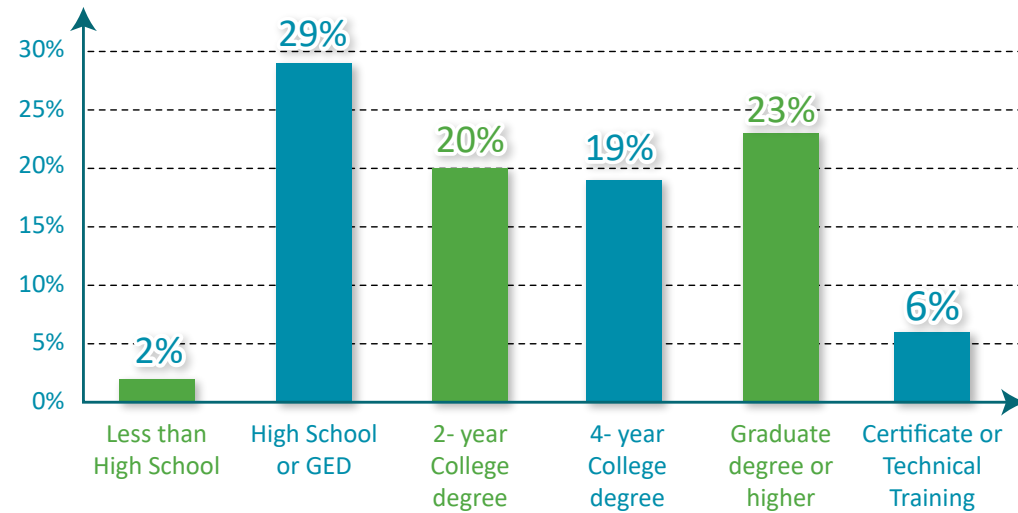
White 91%

Asian 1%

Black 4%

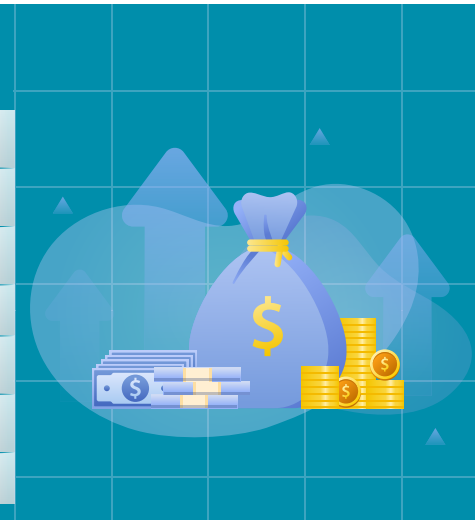
Other 3%

Education



Income

<\$15,000	9%
\$15,001 - \$25,000	10%
\$25,001 - \$35,000	10%
\$35,001 - \$50,000	12%
\$50,001 - \$75,000	24%
\$75,001 - \$100,000	17%
\$100,001 +	18%



COMMUNITY PARTNER ASSESSMENT

Uniting Partners for Collective Community Health: In the heart of Sumter County, a collaborative spirit resonates as diverse partners, unite with a shared purpose—to catalyze transformative change and uplift the overall well-being of the community. The Sumter County Community Partner Assessment (CPA) unfolds as a testament to the power of collective action.

COMMUNITY PARTNERS

- Florida Department of Health in Sumter County
- Lake Sumter State College
- UF Health The Villages Hospital
- City of Wildwood
- Langley Health Services
- Sumter County Fire and EMS
- Community Emergency Response Team of the Villages
- WellFlorida Council
- Sumter School District
- Sumter County Board of County Commissioners

These partners bring unique perspectives and expertise to the assessment process. This endeavor recognizes that community health is an intricate tapestry woven from various threads—education, social services, arts and culture, leadership, and beyond. Partners, regardless of sectoral affiliations, converge with a dedication to understanding the community's needs, strengths, and aspirations. Through this holistic lens, the CPA illuminates pathways toward actionable strategies, ensuring that every voice contributes to the symphony of solutions that will resonate throughout Sumter County. Together, partners redefine the boundaries of collaboration, acknowledging that improving community health requires a chorus where each unique note, irrespective of its origin, harmonizes for a healthier and more vibrant future.

Understanding the Factors Impacting Health and Well-being in Sumter County: *The Crucial Role of Partnerships:* Health and well-being in Sumter County are intricately woven into the fabric of various interconnected factors, reflecting both the challenges and opportunities that shape the community's overall vitality. The assessment identifies key elements impacting health outcomes, including social determinants of health, health behaviors, environmental factors, and access to healthcare. Partnerships play a paramount role in addressing these root causes, providing a comprehensive approach to tackling challenges and fostering community well-being. The CPA aims to understand collaborative dynamics, identify common goals, enhance community well-being, promote inclusivity and diversity, facilitate strategic planning, strengthen the network, and contribute to health equity.

GOALS AND INTENTIONS:

THE SUMTER COUNTY CPA IS DESIGNED WITH OVERARCHING GOALS AND INTENTIONS TO:

1 UNDERSTAND COLLABORATIVE DYNAMICS:

Gain a comprehensive understanding of the collaborative dynamics among diverse organizations in Sumter County. Uncover existing connections, partnerships, and working relationships among community partners. Identify patterns of collaboration and communication to enhance synergy.

2 IDENTIFY COMMON GOALS AND PRIORITIES:

Identify shared goals and priorities among participating organizations. Explore the top interests and immediate needs of community partners. Uncover areas of convergence in programmatic focus, community well-being, and addressing health disparities.

GOALS AND INTENTIONS:

3 ENHANCE COMMUNITY WELL-BEING:

Contribute to the improvement of community well-being in Sumter County. Understand the specific efforts and initiatives aimed at enhancing community health. Identify opportunities for collective action and collaboration to address health inequities and improve overall well-being.

4 PROMOTE INCLUSIVITY AND DIVERSITY:

Promote inclusivity and diversity in community health initiatives. Assess the inclusivity of programs and services provided by participating organizations. Highlight efforts to serve diverse racial, ethnic, LGBTQIA+, and other demographic groups within the community.

5 FACILITATE STRATEGIC PLANNING:

Provide insights for strategic planning and coordination among community partners. Offer data and perspectives to inform future strategic initiatives. Facilitate discussions on collective planning, resource optimization, and alignment of efforts for a more coordinated approach.

6 STRENGTHEN THE NETWORK:

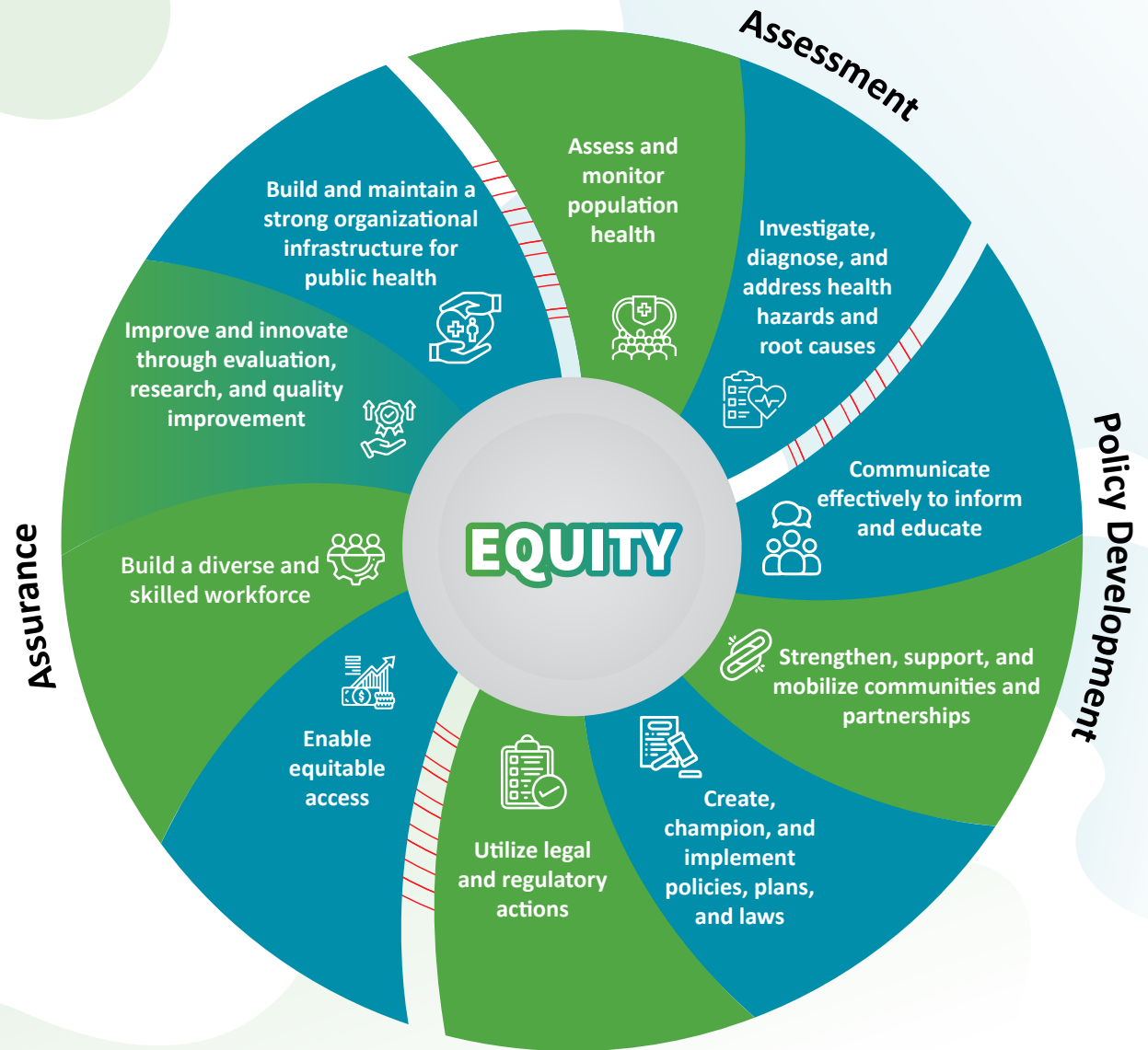
Strengthen the network of community partners for a more impactful health ecosystem. Identify opportunities for increased communication, collaboration, and partnership. Encourage the development of a resilient and interconnected health network to address community-wide challenges.

7 CONTRIBUTE TO HEALTH EQUITY:

Contribute to the overarching goal of achieving health equity in Sumter County. Assess the commitment of participating organizations to dismantling barriers, ensuring equitable access to healthcare resources, and providing tailored support to diverse community groups. By aligning with these goals and intentions, the Sumter County CPA aims to provide a comprehensive and actionable roadmap for enhancing the collective impact of community organizations in promoting health and well-being.



Sumter County CPA Survey and Essential Public Health Services (EPHS): The CPA serves as a comprehensive evaluation process, allowing community partners engaged in Mobilizing for Action through Planning and Partnerships (MAPP) to assess both their individual systems, processes, and capacities, and their collective capacity as a network to address health inequities. Sumter County's CPA survey aligns with the Essential Public Health Services (EPHS), actively promoting policies, systems, and overall community conditions that enable optimal health for all and seek to remove systemic and structural barriers contributing to health inequities. The survey, utilizing the Model Standards, incorporates each of the 10 Essential Public Health Services (revised 2020), providing a framework for public health to protect and promote the health of all individuals in all communities.



Source: CDC-10 Essential Public Health Services, Public Health Infrastructure Center, released on September 9, 2020.

The CPA survey delves into essential local public health system services, covering areas such as the organization's overview, organizational capacities, and specific capacities supporting the MAPP collaborative.

Populations Served: Sumter County's community partners unite to extend services to diverse populations, emphasizing health equity. Commitment extends to Black/African American, African, Native American/Indigenous/Alaska Native, Latinx/Hispanic, Asian, Asian American, Pacific Islander/Native Hawaiian, Middle Eastern/North African, White/European communities, immigrants, refugees, and asylum seekers.

Topic Areas of Focus: Key focus areas include enhancing economic stability, improving education access, ensuring healthcare access and quality, addressing neighborhood, and built environment concerns, and fostering a supportive social and community context. Identified determinants guide future initiatives.

Health Inequities Identified: The CPA highlights health inequities in Sumter County, spanning healthcare access, education, economic stability, and housing. Addressing these disparities through targeted interventions emphasizes the pursuit of health equity for marginalized communities.

Services and Engagements Offered: Sumter County's community partners provide a range of services, including immunizations, screenings, mental and behavioral health support, economic stability initiatives, and enhanced healthcare access. This comprehensive approach aims to address diverse community health needs based on identified goals.

Capacities for Future Improvements: Sumter County's community partners possess key capacities crucial for the success of the Mobilizing for Action through Planning and Partnerships framework. These capacities include strong organizational infrastructures, leadership

development programs, and expertise in evaluation, research, and continuous quality improvement. Leveraging these capacities will enhance collaborative planning and implementation of initiatives, aligning with identified goals for improved health outcomes.

Partners' Goals and Strategies: The partners aim to enhance Sumter's collective capacity by focusing on leadership development, recognizing the impact of community health on student success, forming political partnerships for sustained funding, expanding health promotion services, integrating EMS and behavioral health initiatives, deploying mobile stroke and trauma units, ensuring equitable health services for all residents, and developing a community alliance coordinating available services, as identified within their specific goals and strategies.

Community Preparedness: With 200 members trained to respond to community disasters and emergencies, Sumter County emphasizes community preparedness. All members are equipped with first aid and CPR training. This initiative enhances the well-being of families and contributes to community health.

Education and Well-being: Sumter County provides a safe and healthy learning environment for students and staff. This commitment reflects the county's holistic approach to community well-being, extending beyond medical services to the educational realm.



Unveiling the Layers of Community Health Dynamics: In Sumter County, a diverse array of stakeholders and students actively engage, fostering a large base of involvement. The county's facilities, strategically designed to meet the varied needs of the community, house an extensive range of services united by a common mission to effectively address community needs. Ensuring access to quality inpatient specialty services, UF Health holds certifications in various disease specialties, including Primary Stroke Certification and Chest Pain Accreditation. As part of a larger system connected to a leading academic institution, the county strives to uphold high standards in healthcare. In addition to primary services, Sumter County plays a dual role as a potential funding source and a community-wide communication hub. This reflects the county's commitment to supporting the community not only through direct services but also by contributing to its overall well-being. Langley Health Services offers medical and dental services and their reach extends to Marion and Citrus Counties. Conveniently located within the same building are a variety of services, such as family practice, behavioral health, dental, lab, pharmacy, radiology, and more. This consolidated approach aims to enhance accessibility and coordination of care.

Quality of Life Taskforce: In its commitment to addressing health inequities, DOH-Sumter has established a Quality of Life Taskforce that focuses on the social determinants of health and how to improve the health and wellness of all residents of Sumter County. Members of this taskforce collaborate to bring together multiple organizations that share aligned community goals; this creates opportunities for community partners to create and share projects. Additionally, this allows DOH-Sumter to select and facilitate projects targeting specific social determinants of health based on the needs of Sumter County residents.

Overarching MAPP Themes:

Through the Sumter County CPA, profound insights into the overarching Mobilizing for Action through Planning and Partnerships themes emerged. Participants recognize the influence of systems of power.



UTILIZING INSIGHTS:

A Strategic Overview: The insights gathered through the CPA survey and discussions in Sumter County provide a rich foundation for strategic community health planning. Here's an overview of how the data can be effectively utilized:



1. Informing Community Health Strategies:

The detailed survey responses and discussions serve as a compass for developing community health strategies in Sumter County. Understanding the nuances of overarching MAPP themes, community strengths, and organizational capacities allows for tailored interventions to address specific needs.



2. Guiding Resource Allocation:

Data on systems of power, social determinants of health, and health behaviors offer a comprehensive understanding of resource needs. This insight guides the effective allocation of resources to areas with the greatest impact on community health.



3. Strengthening Collaborative Partnerships:

The active involvement of diverse community partners highlights the strength of collaborative efforts. Leveraging existing partnerships and fostering new ones based on identified goals will enhance the community's collective capacity for sustainable health improvements.



4. Advancing Health Equity Initiatives:

Addressing health inequities requires targeted initiatives. The CPA insights provide a roadmap for developing and implementing interventions that prioritize health equity, ensuring that all residents have equal access to quality healthcare services.



5. Empowering Community Engagement:

The unexpected themes, such as narrative change and arts as a health influencer, open new avenues for community engagement. These insights can be utilized to empower the community, encouraging active participation in health initiatives, and fostering a sense of ownership in the collective pursuit of well-being.

The Sumter County CPA serves as a comprehensive guide for advancing community health. The engagement of diverse stakeholders, the identification of key health determinants, and the commitment to addressing health disparities position Sumter County on a path towards a healthier, more equitable future. The insights gained from this assessment will inform strategic planning, resource allocation, and collaborative efforts to achieve lasting positive health outcomes for all residents. Sumter County's journey towards a healthier community is fueled by the collective dedication of its community partners and the shared vision of a vibrant and equitable future.

COMMUNITY CONTEXT ASSESSMENT

In our pursuit of understanding Sumter County's dynamics, the Community Context Assessment (CCA) integrates a full Strengths, Weaknesses, Opportunities, and Threats (SWOT) analysis along with a comprehensive Forces of Change Analysis (FOCA). This holistic approach aims to unravel the intricate tapestry of Sumter County, acknowledging inherent strengths, scrutinizing influential forces, and examining proactive community measures.

OBJECTIVES OF THE CCA:

1. UNRAVELING STRENGTHS AND RESOURCES:

- Emphasis on factors supporting health and well-being within Sumter County.
 - Qualitative exploration of inherent strengths and resources.
- Examples from SWOT Analysis: Free transportation, supportive school system, presence of higher-paying jobs.



2. SCRUTINIZING FORCES SHAPING CONDITIONS:

- Analysis of political, economic, and social conditions.
- Examination of physical and cultural assets in the built environment.
 - Examples from SWOT Analysis: Presence of natural resources, partnerships with academic institutions.



3. EXAMINING PROACTIVE COMMUNITY MEASURES:

- Discernment of proactive measures enhancing health outcomes and well-being.
- Qualitative insights into community-driven initiatives.
 - Examples from FOCA: Political dynamics, economic forces, social dynamics, historical context, global and regional influences.



SWOT ANALYSIS:



STRENGTHS:

- 1 Limited access/low cost transportation via Sumter Transit.
- 2 Access to Federally Qualified Health Center (FQHC) (limited).
- 3 Supportive school system and community.
- 4 Presence of higher-paying jobs.
- 5 Natural resources (parks/recreation centers).
- 6 University of Florida.
- 7 University of South Florida.
- 8 Wisdom and generosity of the community.
- 9 Safe community with a low crime rate.



WEAKNESSES:

- 1 Number of qualified healthcare professionals.
- 2 Presence of food deserts.
- 3 Lack of affordable housing.
- 4 Food insecurity.
- 5 Health disparities.
- 6 Community dichotomy.
- 7 Low health literacy.
- 8 Limited emergency services.
- 9 Limited transportation options.
- 10 Population growth concerns.
- 11 Underserved minorities.
- 12 Language barriers.
- 13 Lack of specialty care.
- 14 Insufficient homeless shelters.
- 15 Limited community involvement.



OPPORTUNITIES:

- 1 Community education initiatives.
- 2 Bridging gaps between different areas of the county.
- 3 Health education programs.
- 4 Creation and implementation of a care coordination team.
- 5 Establishment of a technology college.
- 6 Partnerships with academic institutions, Healthy Start, Swim Safe Sumter, and Area Health Education Center.
- 7 Introduction of a Mobile Stroke Unit.



THREATS:

- 1 Population growth challenges.
- 2 Lack of healthcare providers.
- 3 Inflation affects affordability.
- 4 Limited access to care.
- 5 Weather and climate change impacts.
- 6 Existing providers leaving the county.
- 7 Difficulty in recruiting and maintaining a professional workforce.
- 8 Increasing housing costs.
- 9 Mental health concerns.
- 10 Risk of infectious diseases.
- 11 Health literacy challenges.
- 12 Proliferation of misinformation.

Forces of Change Analysis within the CCA:

The Forces of Change Analysis outlines transformative events influencing Sumter County across various dimensions.



Moving Forward: This comprehensive assessment provides a nuanced understanding of Sumter County's multifaceted dynamics. As Sumter County moves forward, leveraging strengths for strategic initiatives, collaborative partnerships, and a united, resilient community will be paramount. The actionable insights derived from this integrated assessment pave the way for strategic planning, community engagement, and collaborative efforts, offering a dynamic roadmap for meaningful and equitable improvements in Sumter County's overall health and well-being.

CONCLUSIONS

Assessment respondents and attendees were asked about the gaps in current programs and services and their vision for a healthier Sumter County. Some dominant themes emerged, specifically the need to address obesity, unintentional injury, and access to health resources. Several participants also reported a need to continue to monitor access to healthcare, while others saw a need for continued efforts to develop a collaborative process to strategically work on the involvement across the various sectors of the community in advancing community health.

Key Overarching Themes

This assessment report provides an overview of the social and economic environment of Sumter County, the health conditions and behaviors that most affect the county's residents, and the perceptions of strengths and gaps in the current health care and public health environment. Several overarching themes emerged from this synthesis:

- **Engage All Sectors of the Sumter Community to Promote and Educate the Community on Health Equity.** Partners will collaborate to enhance residents' access to health resources. Businesses will support workplace wellness and information dissemination. Educational institutions will conduct workshops and campaigns for health education. Local government will ensure policies and infrastructure promote equitable healthcare access. Non-profit organizations will provide outreach and financial assistance. Together, these efforts aim to break down barriers and create a supportive environment for community members to readily access necessary health resources.
- **Promote Health for a Lifetime.** A lifetime of wellness encompasses not only physical health but also mental well-being. Cultivating mental health throughout one's life involves building resilience, fostering positive relationships, and developing coping mechanisms for stress. It requires recognizing the importance of self-care, maintaining a balance between work and leisure, and seeking support when needed. Incorporating mindfulness practices, regular exercise, and engaging in activities that bring joy contribute to a robust mental health foundation. As individuals navigate the various stages of life, prioritizing mental well-being becomes integral for sustained happiness and a fulfilling existence. Embracing a lifetime commitment to mental wellness involves continuous self-reflection, adaptability, and a proactive approach to addressing challenges, ultimately leading to a more resilient and balanced life.

IDENTIFIED PRIORITY HEALTH ISSUES

IDENTIFIED PRIORITY HEALTH ISSUES & BEHAVIORS

The 2023 CHNA priority areas were selected based on the previously identified areas of concern in the 2018 CHNA report, input from DOH-Sumter, the Sumter MAPP Steering Committee, community leadership, partner feedback, the community resident survey results, and the community partner survey results. Collaborative discussion resulted in selecting the following priority health issues and behaviors for Sumter County:

Mental Health

Access to Health Resources

Next Steps

The next step following the completion of the CHNA is the formation of the CHIP. All Sumter MAPP Steering Committee partners involved in the CHNA planning will participate in a community collaborative implementation plan addressing the community public health priorities that are highlighted in the CHNA.

A community's health affects its economic competitiveness. Sumter County shares many assets to live, work, play, shop, and obtain medical care.

The CHIP is a five-year plan that sets goals for the county public health system. The CHIP is developed and revised through a collaborative process that includes a wide range of stakeholders including local government agencies, health care providers, employers, community groups, schools, nonprofit organizations, and advocacy groups. This collaborative planning process fosters shared ownership and responsibility for the plan's implementation and promotes efficient and targeted collective action to improve the health of all county residents.

The CHIP contains community priorities for action that are outlined throughout the plan. Each priority contains a goal(s) to provide a desired measurable outcome with a specific indicator. Considerations of social determinants of health, causes of higher health risks, poorer health outcomes, and health inequities are featured in the plan.

The CHIP broadly, but sometimes specifically, plans for policy and system level changes for the alleviation of identified causes of health inequity. Priority areas addressed in the CHIP seek to reduce causes of health inequities through goals, strategies, and objectives.

The CHNA helps identify priority areas where health equity is being addressed. The CHIP spotlights the designation of individuals and organizations that have accepted responsibility for implementing strategies.

The CHIP is intended to be a practical, descriptive document designed to be used by our community in the coming years to make decisions about resources and prioritization. The CHIP is a “living document” that may expand in scope to reflect changes in the community, as well as changes in systems and support that address the well-being of the community we serve. The collaborative efforts we have forged through the Sumter MAPP Steering Committee will help improve our impact as we feel we will be healthier and stronger together.

Community Resources

Many extraordinary healthcare providers and service organizations serve Sumter residents. These organizations form the backbone of our local public health system and are crucial partners in addressing priority health issues. Sumter will seek to engage these organizations during the improvement planning and action portions of this process.

Sumter County offers a Citizen Information Center, available 24/7, at 352-689-4400.



RESOURCE GUIDE

SERVICE

CONTACT INFORMATION

Children's Home Society



226 NE Sanchez Blvd., Ocala, FL 34470

352-732-1355

**Travels to Sumter County to provide services to residents.*

Department of Children and Families



901 Industrial Dr., Wildwood, FL 34785

352-330-2162

Kids Central, Inc.
Foster Care & Adoption
Resource Center



901 Industrial Dr., #200, Wildwood, FL 34785

352-873-6332

Community Services



Centers for Independent Living

(352)368-3788

Community Legal Services of Mid Florida

(800)405-1417

Sumter County Transit

(352) 568-6683

Sumter Veterans Services

(352)689-4450

Rental Properties

www.socialserve.com/tenant/FL

Wildwood Family Resource Center

352 748-1354

Disaster Preparation



CERT of the Villages

352-674-2948

Sumter County Emergency Management

352-689-4400

SERVICE

CONTACT INFORMATION

Education



ESOL at St. Vincent de Paul Parish	(352) 330-0220
GED: Sumter Career & Adult Education	(352) 793-5719 ext. 54200
Goodwill Industries of Leesburg	(352) 323-1847
Goodwill Industries of Clermont	(352) 404-7799
US Jobs	http://us.jobs
Kids Central INC	(352)748-1354
Parenting Classes at Church of the Fishermen	(352) 793-3438
Parenting Resource Room at Webster Elementary	(352) 793-2828

LIFE THREATENING EMERGENCIES 911

Emergency Services



Health & Human Services/Weather Disasters	211 or (877) 700-8177
Domestic Violence 24Hr Crisis Hotline	352) 753-5800
Mental Health 24-Hr Crisis Hotline	(866) 355-9394
Florida Abuse Hotline (Child & Elder)	(800) 962-2873
Florida Elder Helpline	(800) 963-5337
Poison Control	(800) 222-1222
Sexual Assault Hotline (Lake & Sumter)	(352) 787-1379
Veteran's Crisis Line	(800) 273-8255

SERVICE

CONTACT INFORMATION

Employment



CareerSource Central Florida	(352) 360-6280
Employ FL Marketplace	www.employflorida.com
Goodwill (Lake - Leesburg)	(352) 323-1847
Kids Central INC	(352)748-1354
US Jobs	http://us.jobs

Housing/Homeless Assistance



Family Endeavors (U.S. Military Veterans ONLY)	(352) 502-4561
The Haven of Lake & Sumter Counties	(352) 753-5800
New Beginnings Youth Shelter (Brooksville)	(352) 540-6015
Refuge at Jumper Creek	(352) 568-8400
Sumter County School District Homeless Liaison	(352) 793-2315 ext. 50211/50312
US Dept. of Veteran Affairs Homeless Hotline	(877) 424-3838

Housing/Homeless Assistance Refuge at Jumper Creek



Refuge at Jumper Creek	(352) 568-8400
Mobile Services Outreach Unit & Homeless Prevention Drop-In Center at United	
Methodist Church of the Fisherman's Campus Address: 589 N C 470 , Lake Panasoffkee	

SERVICE

CONTACT INFORMATION

Housing/Homeless Assistance Refuge at Jumper Creek



Mobile Services Outreach Unit & Homeless Prevention Drop-In Center at United Methodist Church of the Fisherman's Campus Address: 589 N C 470 , Lake Panasoffkee Hours: Mondays & Wednesdays , 9am - Noon Services Provided: Medical & Mental Health Care, Disability Application Assistance, Housing Coordination & Location Services

Financial



C=Cellphone
M=Mortgage
EA= Energy Assistance
R=Rent
UD=Utility Deposits
RD=Rent Deposits

AARP Tax Aide - Lake Panasoffkee Library <http://www.villagestaxaide.com>

ACCESS Florida (866) 762-2237

C Assurance Wireless (888) 321-5880

R, UD Family Endeavors (U.S. Military Veterans ONLY) (352) 502-4561

R, EA, Mid Florida Community Services

UD Rent Aid (352) 793-3114

Energy & Utility Aid (844) 873-3185

C Safelink Cell Phones (800)723-5465

R, M, St. Vincent de Paul Parish (352) 330-0220

EA The Salvation Army of Lake & Sumter (352) 568-2284

Food Services



ACCESS Florida (866) 762-2237

Caring Hands Food Ministry (352) 748-2553 or (352) 748-1822 ext. 9

Church of the Fishermen (Lake Panasoffkee & Sumterville Residents) (352) 793-3438

First Baptist Church of Lake Panasoffkee (352) 793-5510

SERVICE

CONTACT INFORMATION

Food Services



Hope Ministries (South Sumter Residents)	(352) 568-7729
Love in the Name of Christ	(352) 245-8774
Mid Florida Community Services Wildwood	(352) 748-3411
Mid Florida Community Services Lake Panasoffkee	(352) 793-6111
Mid Florida Community Services Sumterville	(352) 793-6111
Mid Florida Community Services Bushnell	(352) 793-5234
St. Vincent de Paul Parish	(352) 330-0220
The Salvation Army (Lake & Sumter)	(352) 568-2284
Seeds of Hope UMC	(352) 748-1275

Food Services (Meals Served)



Wildwood Soup Kitchen	(352) 748-1008
Address: 203 Barwick Street, Wildwood Hours: Mon-Sat, 11am - 12:30pm	

Medical, Mental Health, & Dental Services



Florida Department of Health Sumter County	(352) 569-3102
Langley Health Services	(352) 793-5900
Lazarus Free Medical Clinic	(352) 748-4567
LifeStream Behavioral Center	(352) 793-4126
Transition Life Consultants	(352) 322-0576

SERVICE

Substance Abuse & Recovery



CONTACT INFORMATION

AA/ NA 211

<http://www.aalakesumter.com>

<http://rivercoastareana.org>

Celebrate Recovery

(352) 978-8368

Celebrate Recovery: at Lake Panasoffkee United Methodist Church

(352) 793-3438

Celebrate Recovery: at Oxford Assembly of God

(352)748-6124

Celebrate Recovery: at Wildwood Methodist Church

(352) 748-1275

LifeStream Behavioral Center

(352) 793-4126



ASCENDANT
HEALTHCARE PARTNERS
Simplifying Community Health Initiatives