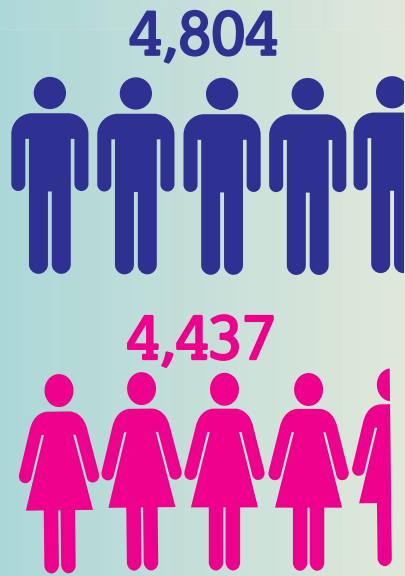


Colorectal Cancer in Florida, 2012

Florida New Cases¹



*Each male and female icon represents 1,000 people.

Florida Deaths¹



Florida

36.5

NEW CASES¹ per 100,000 people



United States

38.9

NEW CASES² per 100,000 people



Florida

13.8

DEATHS¹ per 100,000 people



United States

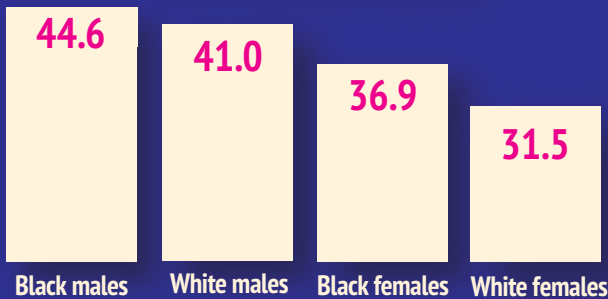
14.7

DEATHS² per 100,000 people

Colorectal cancer is more common among males than females, and among blacks than whites.

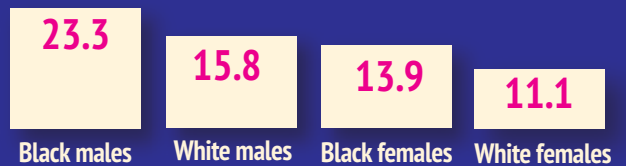
INCIDENCE BY RACE¹

New cases per 100,000



MORTALITY BY RACE¹

Deaths Per 100,000



Additional Information on Side 2

Colorectal Cancer in Florida, 2012

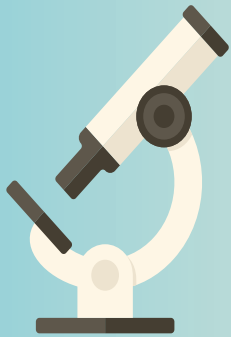
Since 1992, rate of new cases of colorectal cancer has dropped by

40%



Since 1992, death rate from colorectal cancer has dropped by

38%



55%
(more than half) of colorectal cancer cases were diagnosed at a late stage in 2012



Total charges for all cancer hospitalizations due to colorectal cancer in Florida for 2012

\$754,300,000³

Colorectal Cancer Screening

is recommended for adults between the ages of



50 & 75⁴



Testing options include:

- Fecal Immunochemical Test or FIT (testing for blood in the stool) every year
- Sigmoidoscopy (a procedure to examine the lower portion of the colon) every five years with FIT every three years
- Colonoscopy (a procedure to examine the entire colon) every 10 years

Talk to your health care provider to decide which screening test is right for you.

For more information regarding colorectal cancer screening tests, and Florida's Colorectal Cancer Control Program visit: www.coloncancerfl.org



1. Source: Florida Cancer Data System (FCDS)
2. Source: United States Cancer Statistics (USCS)
3. Source: [//fcds.med.miami.edu/downloads/FloridaAnnualCancerReport/2012/Table_No_T38_\(2012\).pdf](http://fcds.med.miami.edu/downloads/FloridaAnnualCancerReport/2012/Table_No_T38_(2012).pdf)
4. Source: United States Preventive Services Task Force (USPSTF)—www.uspreventiveservices.org/Page/Document/UpdateSummaryFinal/colorectal-cancer-screening