

Section 8

Summary of Cancer Data

Summary of Cancer Data, 2007

Cancer incidence data are collected, verified, and maintained by the Florida Cancer Data System (FCDS), Florida's statewide cancer registry. The FCDS is administered by the Florida Department of Health Bureau of Epidemiology and operated by the Sylvester Comprehensive Cancer Center at the University of Miami Leonard M. Miller School of Medicine.

The FCDS began operation with a pilot project for cancer registration in 1980 and commenced statewide collection of cancer incidence data from all Florida hospitals in 1981. The FCDS now collects incidence data from hospitals, freestanding ambulatory surgical centers, radiation therapy facilities, pathology laboratories, and private physician offices. Each facility, laboratory, and practitioner is required to report the FCDS within six months of each diagnosis and within six months of the date of each treatment. Consequently, there is an inherent time lag in the release of cancer registry data for surveillance activities.

During 2007, physicians diagnosed 103,075 primary cancers among Floridians, an average of 282 cases per day. Cancer occurs predominantly among older people as age is the top risk factor. Approximately 59% of the newly diagnosed cancers in 2007 occurred in persons age 65 and older; this age group accounts for 18% of Florida's population. The four most common cancers in Floridians were lung and bronchus (15,854 cases), prostate (15,151 cases), female breast (13,277 cases), and colorectal (10,001 cases), which accounted for 57% of all new cases in blacks, and 52% in whites. Fifty-three percent of new cancers were diagnosed in males. The number of new cancer cases in Florida's five most populous counties (Broward, Miami-Dade, Hillsborough, Palm Beach, and Pinellas) accounted for 39% of the new cancer cases in Florida in 2007.

Over the 27-year period from 1981 to 2007, males had a higher incidence (age-adjusted incidence rate) than females. Among blacks, the incidence among males was between 55% and 102% higher than that among females, depending on the cancer site of comparison. Among whites, the incidence among males was between 28% and 53% higher than that among females. White females had higher age-adjusted incidence rates than black females in all 27 years. The racial disparity varied between 10% and 27%. Black males had higher age-adjusted incidence rates than white males in all years, except in 1987, 1988, and 2006. The racial disparity between black and white males increased from 1989 until 1995; however, has steadily declined since 1996.

More information about the burden of cancer in Florida is provided in the *Florida Annual Cancer Report*, an epidemiological series, available on the department's web site at www.doh.state.fl.us/disease_ctrl/epi/cancer/CancerIndex.htm, or the FCDS web site at www.fcds.med.miami.edu.

Table 1. Number of New Cancer Cases by Sex and Race, Florida, 2007

	All Cancers	Lung & Bronchus	Prostate	Breast	Colorectal	Bladder	Head & Neck	Non-Hodgkin ⁽¹⁾	Melanoma	Ovary	Cervix
Florida ⁽²⁾	103,075	15,854	15,151	13,277	10,001	4,820	4,031	3,975	3,964	1,416	880
Female	48,114	7,306	-	13,277	4,838	1,180	1,100	1,799	1,533	1,416	880
Male	54,862	8,523	15,151	-	5,147	3,634	2,928	2,172	2,430	-	0
Black	9,511	1,189	1,939	1,384	934	163	333	315	-	110	156
White	90,365	14,376	12,682	11,414	8,771	4,520	3,581	3,536	3,964	1,264	690
Black Female	4,162	405	-	1,226	530	57	92	147	-	117	159
White Female	41,236	6,769	-	11,203	4,270	1,041	968	1,635	1,342	1,315	719
Black Male	5,016	738	1,939	-	456	107	252	154	-	-	-
White Male	48,164	7,635	12,682	-	4,529	3,422	2,593	1,948	2,430	-	-

Source of data: Florida Cancer Data System

(1) Non-Hodgkin refers to Non-Hodgkin's lymphoma throughout this report.

(2) Florida incidence totals throughout this report include 1,502 new cancers in persons of "Other" races, 1,697 cases with unknown race, 90 cases with unknown or unspecified sex. Totals by sex include cases with unknown or Other race. Totals by race include cases with unknown sex.

Table 2. Number of New Cancer Cases by County, Florida, 2007

	All Cancers	Lung & Bronchus	Prostate	Breast	Colorectal	Bladder	Head & Neck	Non-Hodgkin	Melanoma	Ovary	Cervix
Florida	103,075	15,854	15,151	13,277	10,001	4,820	4,031	3,975	3,964	1,416	880
Alachua	1,063	155	171	136	110	41	60	31	36	12	12
Baker	124	30	14	14	15	^	^	^	^	^	^
Bay	932	166	140	126	79	35	49	32	36	12	16
Bradford	126	22	20	10	10	^	^	^	^	^	^
Brevard	3,868	645	542	439	364	217	167	134	154	62	15
Broward	8,942	1,260	1,140	1,264	840	386	323	368	360	136	109
Calhoun	76	16	^	^	15	^	^	^	^	^	^
Charlotte	1,453	253	274	155	102	91	51	46	65	^	^
Citrus	1,295	232	229	151	122	71	40	48	60	19	14
Clay	846	146	128	125	81	35	34	21	30	17	^
Collier	2,150	323	429	240	169	129	81	92	114	32	14
Columbia	329	61	38	37	44	10	22	12	13	^	^
Miami-Dade	11,037	1,285	1,729	1,530	1,209	397	441	453	188	175	137
DeSoto	176	24	35	26	19	10	^	^	^	^	^
Dixie	94	23	10	15	^	^	^	^	^	^	^
Duval	4,180	672	589	609	401	181	169	159	137	54	40
Escambia	1,568	274	241	202	138	63	62	56	51	18	15
Flagler	612	106	74	80	58	25	19	34	17	^	^
Franklin	50	^	^	^	^	^	^	^	^	^	^
Gadsden	226	32	30	42	24	^	^	14	^	^	^
Gilchrist	98	17	^	16	^	^	^	^	^	^	^
Glades	58	12	13	^	^	^	^	^	^	^	^
Gulf	83	15	11	11	10	^	^	^	^	^	^
Hamilton	74	13	10	^	14	^	^	^	^	^	^
Hardee	85	12	19	^	^	^	^	^	^	^	^

^ Statistics for cells with fewer than 10 cases are not displayed.
Source of data: Florida Cancer Data System

Table 2. (Continued) Number of New Cancer Cases by County, Florida, 2007

	All Cancers	Lung & Bronchus	Prostate	Breast	Colorectal	Bladder	Head & Neck	Non-Hodgkin	Melanoma	Ovary	Cervix
Hendry	139	24	22	18	11	^	^	^	11	^	^
Hernando	1,309	256	190	143	119	71	63	48	50	13	^
Highlands	790	130	125	72	85	32	42	23	49	^	^
Hillsborough	5,463	766	738	730	569	214	246	225	206	78	50
Holmes	102	24	14	11	11	^	^	^	^	^	^
Indian River	1,031	181	123	133	112	50	35	40	58	14	^
Jackson	283	55	49	35	33	^	^	^	^	^	^
Jefferson	75	16	10	15	^	^	^	^	^	^	^
Lafayette	25	^	^	^	^	^	^	^	^	^	^
Lake	2,375	359	446	268	230	125	78	80	112	33	18
Lee	3,639	562	674	383	331	212	153	146	169	38	24
Leon	906	133	156	139	78	19	34	27	39	24	^
Levy	240	53	44	25	29	13	14	^	^	^	^
Liberty	31	^	^	^	^	^	^	^	^	^	^
Madison	104	21	18	11	10	^	^	^	^	^	^
Manatee	1,952	310	310	249	203	110	82	71	73	24	14
Marion	2,475	439	427	306	247	111	93	92	84	39	13
Martin	1,106	183	177	134	79	73	52	28	47	15	^
Monroe	386	66	48	56	35	11	20	13	17	^	^
Nassau	391	62	65	62	34	17	23	11	13	^	^
Okaloosa	988	151	133	138	97	55	34	39	44	10	10
Okeechobee	227	53	24	29	26	10	^	^	^	^	^
Orange	4,289	574	573	617	419	163	166	196	152	63	52
Osceola	1,014	144	144	127	103	36	29	41	34	21	14
Palm Beach	8,260	1,176	1,042	1,026	732	437	283	367	408	111	59
Pasco	3,014	523	448	354	293	171	131	114	120	40	20

^ Statistics for cells with fewer than 10 cases are not displayed.
Source of data: Florida Cancer Data System

Table 2. (Continued) Number of New Cancer Cases by County, Florida, 2007

	All Cancers	Lung & Bronchus	Prostate	Breast	Colorectal	Bladder	Head & Neck	Non-Hodgkin	Melanoma	Ovary	Cervix
Pinellas	6,122	1,018	814	865	575	336	234	219	246	81	33
Polk	3,626	595	495	371	407	137	109	145	183	56	25
Putnam	500	107	73	53	45	24	27	20	18	10	^
Saint Johns	943	150	127	149	73	40	31	38	41	10	12
Saint Lucie	1,461	248	197	155	149	71	34	46	70	12	16
Santa Rosa	725	125	95	103	62	44	32	22	36	11	^
Sarasota	2,940	455	553	375	270	154	87	104	126	35	13
Seminole	1,731	209	261	251	169	75	65	77	85	19	12
Sumter	740	113	159	90	59	53	23	29	20	^	^
Suwannee	243	42	26	25	32	14	18	12	^	^	^
Taylor	105	24	18	10	10	^	10	^	^	^	^
Union	208	38	17	12	16	^	25	11	^	^	^
Volusia	3,107	562	340	414	325	166	132	109	100	46	26
Wakulla	125	24	22	17	12	^	^	^	^	^	^
Walton	235	48	20	37	24	^	^	^	11	^	^
Washington	105	23	18	10	13	^	^	^	^	^	^

^ Statistics for cells with fewer than 10 cases are not displayed.
Source of data: Florida Cancer Data System

Table 3. Age-Adjusted Incidence Rates⁽¹⁾ by Sex and Race, Florida, 2007

	All Cancers		Lung & Bronchus		Prostate		Breast		Colorectal		Bladder								
	Rate	CI	Rate	CI	Rate	CI	Rate	CI	Rate	CI	Rate	CI							
Florida⁽²⁾	441.2	438.5	444.0	444.0	64.8	63.8	65.8	136.2	134.0	138.4	110.8	108.8	112.7	41.8	40.9	42.6	19.5	18.9	20.0
Female	387.4	383.8	391.0	391.0	54.3	53.0	55.6	110.8	108.8	112.7	36.5	35.4	37.6	8.5	8.0	9.0			
Male	512.0	507.6	516.3	516.3	78.0	76.4	79.7	136.2	134.0	138.4				48.2	46.9	49.6	33.7	32.6	34.8
Black	426.7	417.8	435.7	435.7	56.4	53.1	59.9	206.0	196.4	216.1	103.7	98.2	109.5	43.3	40.4	46.3	8.6	7.3	10.1
White	436.7	433.7	439.6	439.6	65.3	64.2	66.4	126.3	124.1	128.5	109.5	107.4	111.6	40.8	40.0	41.7	20.2	19.6	20.8
Black Female	350.7	340.3	361.4	361.4	36.7	33.3	40.3				103.7	98.2	109.5	38.4	35.0	42.2	4.8	3.6	6.3
White Female	387.4	383.5	391.3	391.3	55.9	54.5	57.3				109.5	107.4	111.6	35.7	34.5	36.8	8.8	8.3	9.4
Black Male	535.4	519.6	551.6	551.6	84.4	78.1	91.3	206.0	196.4	216.1				50.1	45.3	55.4	14.6	11.7	17.9
White Male	501.7	497.2	506.3	506.3	77.0	75.3	78.8	126.3	124.1	128.5				47.1	45.7	48.5	34.6	33.5	35.8

Source of data: Florida Cancer Data System

(1) Rates are expressed as number of cases per 100,000 population per year, adjusted to the 2000 U.S. standard population.

(2) Florida incidence rates throughout this report include 1,502 new cancers in persons of "Other" races, 1,697 cases with unknown race and 90 cases with unknown or unspecified sex. Rates calculated by sex include cases with unknown or other race. Rates by race include cases with unknown sex and age.

Table 3. (Continued) Age-Adjusted Incidence Rates⁽¹⁾ by Sex and Race, Florida, 2007

	All Cancers		Head & Neck		Non-Hodgkin		Melanoma		Ovary		Cervix								
	Rate	CI	Rate	CI	Rate	CI	Rate	CI	Rate	CI	Rate	CI							
Florida⁽²⁾	441.2	438.5	444.0	17.4	16.8	17.9	17.9	17.4	16.8	17.9	20.5	19.8	21.1	11.7	11.0	12.3	8.9	8.3	9.5
Female	387.4	383.8	391.0	8.8	8.2	9.3	14.3	13.6	15.0	16.0	16.8	15.1	16.8	11.7	11.0	12.3	8.9	8.3	9.5
Male	512.0	507.6	516.3	27.3	26.3	28.3	21.0	20.1	21.9	26.4	25.3	27.5							
Black	426.7	417.8	435.7	14.1	12.6	15.8	13.3	11.8	14.9					8.3	6.8	10.1	11.4	9.7	13.4
White	436.7	433.7	439.6	17.6	17.0	18.2	17.4	16.8	18.0	20.5	19.8	21.1		11.9	11.2	12.6	8.6	7.9	9.3
Black Female	350.7	340.3	361.4	6.1	4.8	7.7	12.5	10.6	14.6					8.3	6.8	10.1	11.4	9.7	13.4
White Female	387.4	383.5	391.3	8.9	8.4	9.5	14.1	13.4	14.9	16.0	15.1	16.8		11.9	11.2	12.6	8.6	7.9	9.3
Black Male	535.4	519.6	551.6	24.9	21.7	28.6	14.1	11.8	16.8										
White Male	501.7	497.2	506.3	27.4	26.3	28.5	21.2	20.3	22.2	26.4	25.3	27.5							

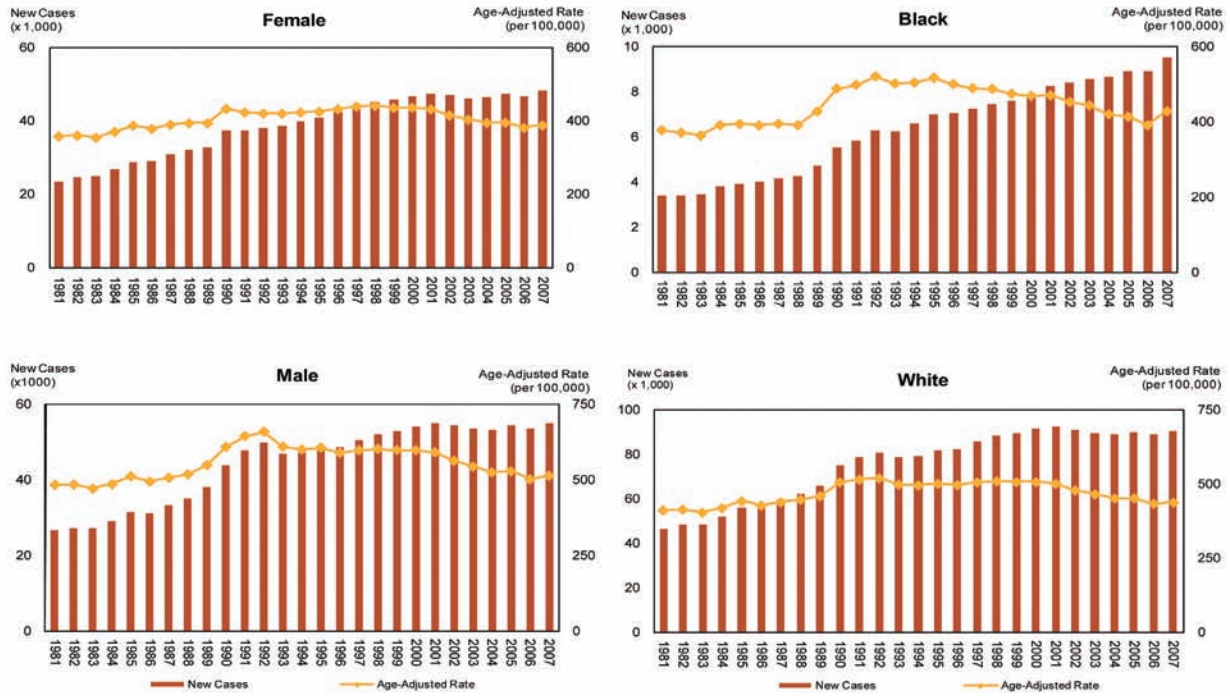
Source of data: Florida Cancer Data System

(1) Rates are expressed as number of cases per 100,000 population per year, adjusted to the 2000 U.S. standard population.

(2) Florida incidence rates throughout this report include 1,502 new cancers in persons of "Other" races, 1,697 cases with unknown race and 90 cases with unknown or unspecified sex. Rates calculated by sex include cases with unknown or other race. Rates by race include cases with unknown sex and age.

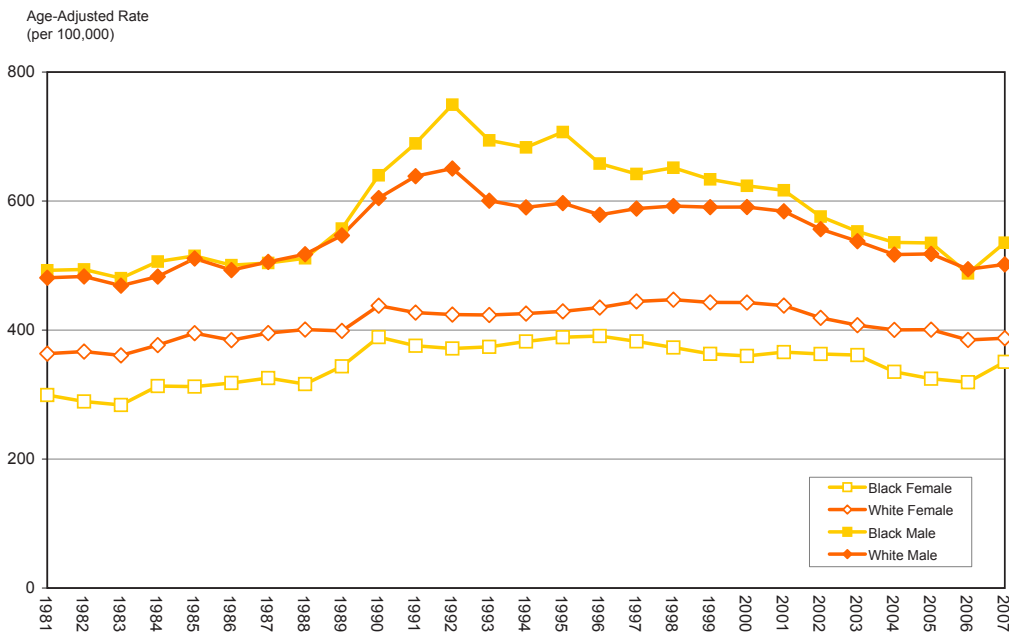
Section 8: Summary of Cancer Data, 2007

Figure 1. New Cases and Age-Adjusted Incidence Rates for All Cancers by Sex and by Race, Florida, 1981-2007



Source of data: Florida Cancer Data System

Figure 2. Age-Adjusted Incidence Rates for All Cancers by Sex and by Race, Florida, 1981-2007



Source of data: Florida Cancer Data System

Figure 3. Age-Specific Incidence Rates for All Cancers by Sex, Race, and Age Group, Florida, 1981-2007

