



## Week 53: December 28, 2014 - January 3, 2015



### Summary

#### National influenza activity:

##### •Influenza activity continues to increase nationally.

- The Centers for Disease Control and Prevention (CDC) has identified an antigenically drifted influenza A (H3N2) strain circulating nationally and in Florida that is different from the strain of influenza A (H3N2) contained in the current 2014-15 influenza vaccine formulations.
- Vaccination is still recommended as it provides some protection against drifted viruses and it also protects against other circulating strains. People who have not yet been vaccinated should get vaccinated now.
- The CDC recommends the use of neuraminidase inhibitor antiviral medications, when indicated, for treatment and prevention to influenza, as an adjunct to vaccination. More information can be found here: [http://www.floridahealth.gov/diseases-and-conditions/influenza/\\_documents/Other/influenza-letter-for-health-care-providers.pdf](http://www.floridahealth.gov/diseases-and-conditions/influenza/_documents/Other/influenza-letter-for-health-care-providers.pdf).

#### State Influenza and influenza-like illness (ILI) activity:

##### •The 2014-15 flu season is in full swing in Florida.

•While it is not uncommon for influenza and ILI activity levels to increase during this time of year, current activity levels are above levels seen during previous years at this time. Influenza activity has increased the most in people over 65 in the past few weeks, **influenza activity remains highest in children and overall is widespread throughout Florida.**

•**Due to increased influenza activity in all regions of the state, Florida reported widespread influenza activity to CDC in week 53.** This is the fourth week reporting widespread activity; this represents the geographic spread of influenza in Florida.

•**Most Florida counties reported increasing influenza activity.** In week 53, 34 counties reported increasing influenza activity; 30 counties indicated activity is at a plateau.

##### •Emergency department (ED) and urgent care center (UCC) ILI visits are increasing in all regions.

- The proportion of visits to EDs and UCCs with a chief complaint of ILI and the proportion of visits resulting in a discharge diagnosis of influenza for those ≤19 years old are at or near what we typically see at the peak of flu season. Increased influenza activity in children typically comes ahead of increases in activity in adults and the elderly.
- There continues to be increased levels of influenza in pregnant women presenting to EDs for care that is above expected levels for this time of year. Pregnant women are among those at high risk for severe complications due to influenza infection. More information can be found here: [http://www.floridahealth.gov/diseases-and-conditions/influenza/\\_documents/Other/influenza-guidance-for-health-care-providers.pdf](http://www.floridahealth.gov/diseases-and-conditions/influenza/_documents/Other/influenza-guidance-for-health-care-providers.pdf)
- **In Florida, the most common influenza subtype detected at the Bureau of Public Health Laboratories (BPHL) in recent weeks has been influenza A (H3):** In week 53, 40 of 57 (70.2%) specimens submitted for influenza testing at BPHL were PCR positive for seasonal strains of influenza: thirty-one were positive for influenza A (H3), seven were influenza A not yet subtyped, and one was influenza B not yet subtyped. While it is too early to tell if this flu season will be worse than other years, seasons when influenza A (H3) predominantly circulates are often associated with higher morbidity and mortality, particularly in the elderly and very young.

•**Six outbreaks of influenza (two or more cases of influenza or ILI in a specific setting) were reported to EpiCom in week 53.**

•**No pediatric influenza-associated deaths were reported in week 53.**

•**The preliminary estimated number of Florida deaths due to pneumonia or influenza in week 53 was below the excess threshold.**

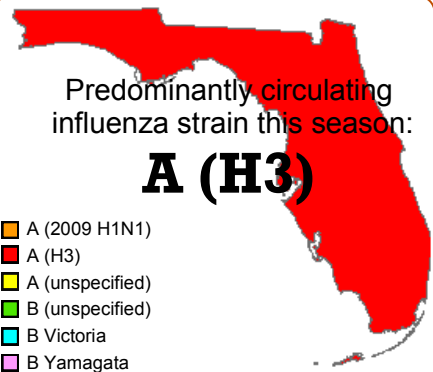
January 7, 2015

Posted on the Bureau of Epidemiology website:

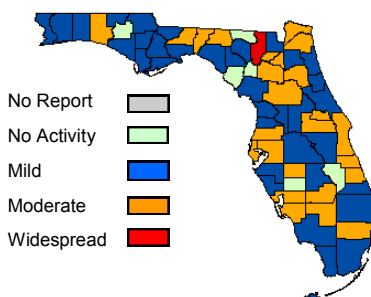
<http://www.floridahealth.gov/floridaflu>

Produced by: Bureau of Epidemiology, Florida Department of Health

Contributors: Heather Rubino, PhD; Ellen Dugan, MPH, Leah Eisenstein, MPH; Lea Heberlein-Larson, MPH; Valerie Mock; Janet Hamilton, MPH

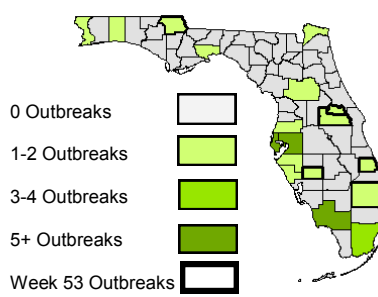


Map 1: County Influenza Activity Week 53, 2014



Twenty-four counties reported moderate influenza activity. For more information, see page 6.

Map 2: Influenza and ILI Outbreaks Week 53, 2014



Forty-five outbreaks of ILI or influenza have been reported since Week 40, 2014. For more information, see page 10.

#### In this Issue:

Summary	1
ILINet ILI-Statewide	2
ESSENCE-FL Syndromic Surveillance Summary-Statewide	3
ESSENCE-FL Syndromic Surveillance Summary-Regional	3
Bureau of Public Health Laboratories Viral Surveillance	5
County Influenza and ILI Activity	6
Pediatric Influenza-Associated Mortality	8
ESSENCE-FL Pneumonia and Influenza Mortality	9
NREVSS Respiratory Virus Surveillance	10
Influenza and ILI Outbreaks Reported in EpiCom	10
Florida ILI Surveillance System Summary	11

Descriptions of Florida influenza and ILI surveillance systems can be found on page 11.

TABLE 1: Summary of Florida Influenza-Like Illness (ILI) Activity for Week 53

Measure	Difference from Previous Week	Current Week 53	Previous Week 52	Page of Report
Overall statewide activity code reported to CDC	No Change	Widespread	Widespread	1
Percent of visits to ILINet providers for ILI	▼ 1.3	2.8%	4.1%	2
Percent of ED and UCC visits (from ESSENCE-FL) due to ILI	▼ 0.8	5.0%	5.8%	3
Percent of laboratory specimens that were positive for influenza	▼ 8.6	70.2%	78.8%	5
Number of counties reporting moderate influenza activity	▼ 2	24	26	6
Number of counties reporting widespread influenza activity	No Change	0	0	6
Number of counties reporting increasing influenza activity	▼ 5	34	39	6
Number of counties reporting decreasing influenza activity	▼ 1	2	3	6
Number of ILI outbreaks reported in EpiCom	▲ 2	6	4	10

### ILINet Influenza-Like Illness-Statewide

ILINet is a nationwide surveillance system composed of sentinel providers. Florida has 107 providers enrolled in ILINet who submit weekly ILI and total visit counts, as well as submit ILI specimens to the BPHL for confirmatory testing. For this season, the Bureau of Epidemiology (BOE) has designated 13 of these ILINet physicians' offices as Super-Sentinels. These Super-Sentinels receive more active follow-up from BOE and participating county health departments (CHDs), with the goal of increasing data quality and surveillance specimen submission.

**FIGURE 1** shows the percentage of visits for ILI\* reported by ILINet sentinel providers statewide.

The percent of visits to ILINet sentinel outpatient physicians for ILI is above levels seen at this time in previous years

- Fifty-four of 107 ILINet providers reported visit counts as of 5:00 p.m., January 6, 2015.
- Eight of 13 ILINet Super-Sentinels reported visit counts as of 5:00 p.m., January 6, 2015.

**FIGURE 2** shows ILI visit counts reported by ILINet sentinel providers statewide by age group.

In week 53, the number of visits to ILINet sentinels for ILI decreased in the 0-4, 5-24, and 25-64 age groups. The number of visits in the 65+ age group increased in week 53.

FIGURE 1: Percentage of Visits for Influenza-Like Illness (ILI)\* Reported by ILINet Sentinel Providers Statewide, Week 40, 2011 through Week 53, 2014 as Reported by 5:00 p.m. January 6, 2014

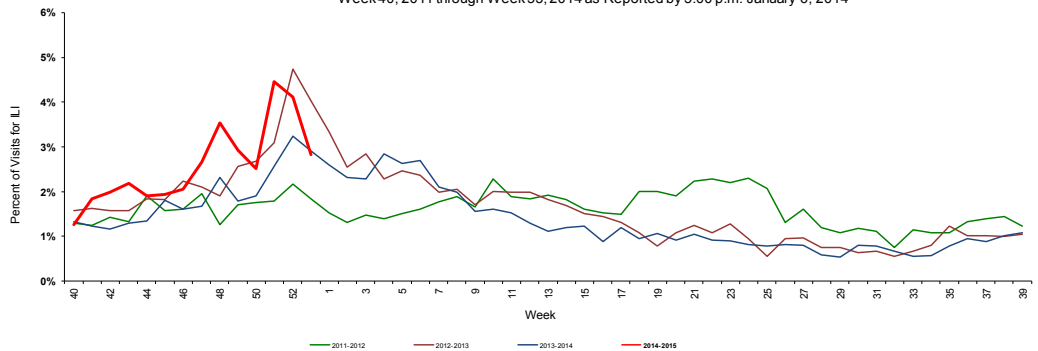
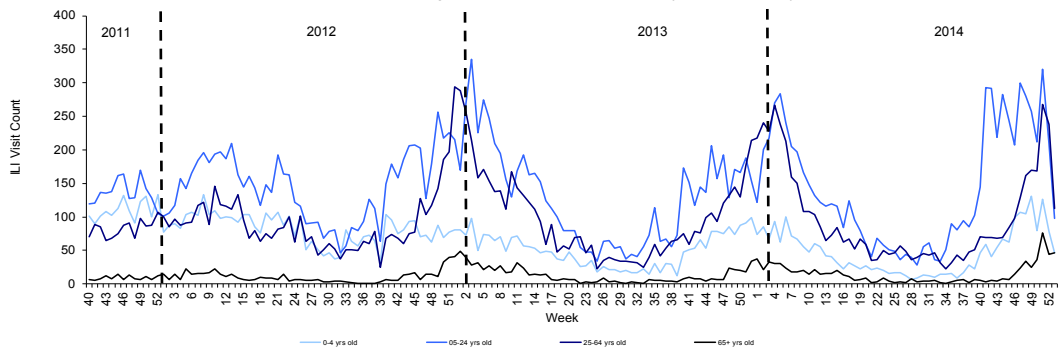


FIGURE 2: Influenza-Like Illness (ILI)\* Visit Counts Reported by ILINet Sentinel Providers Statewide by Age Group, Week 40, 2011 through Week 53, 2014 as Reported by 5:00 p.m. January 6, 2014



[Return to Top](#)

†Data presented here are counts, not proportions as included in Figure 1. This is because age group denominator data is not available through ILINet.

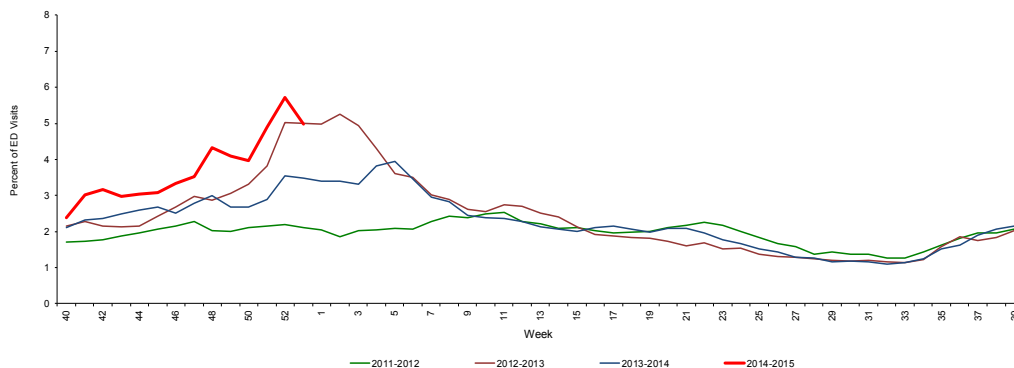
\*ILI = Influenza-like illness, fever >100°F AND sore throat and/or cough in the absence of another known cause.

ESSENCE-FL collects data daily from 219 EDs and UCCs. These data are processed into 11 different syndrome categories based on the patient's chief complaint. One of the categories is ILI, which is composed of chief complaints that include the words "influenza" or "flu," or complaints that contain fever plus cough or sore throat.

**FIGURE 3** shows ESSENCE-FL data on ILI visits to EDs and UCCs as a percentage of all visits.

The percent of visits to EDs and UCCs for ILI has been above levels seen in previous years at this time.

FIGURE 3: Percentage of Influenza Like-Illness visits from Emergency Department (ED) and Urgent Care Center (UCC) Chief Complaints, ESSENCE-FL Participating Facilities (N=219), Week 40, 2011 through Week 53, 2014 Accessed January 7, 2014

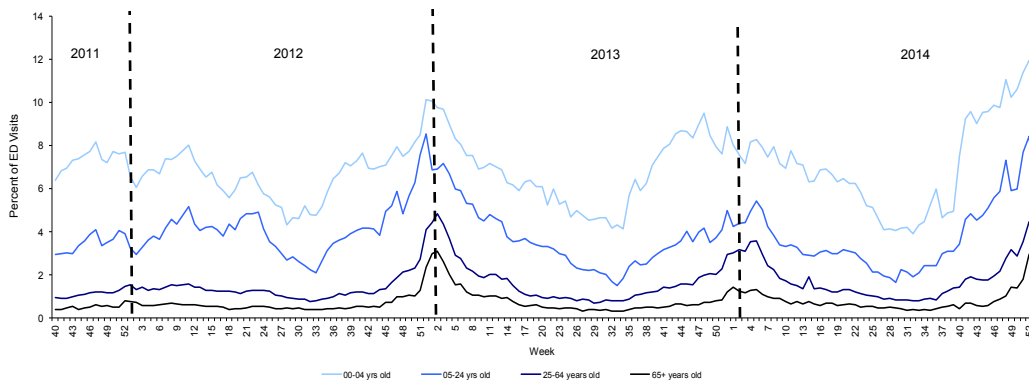


**FIGURE 4** shows percentage of ILI among all ED and UCC visits by age.

The percent of ED and UCC visits for ILI is above levels seen in previous years for the 0-4, 25-64, and 85+ age groups at this time. The percent of ED and UCC visits for ILI is similar to levels seen in previous years for the 5-24 age group at this time.

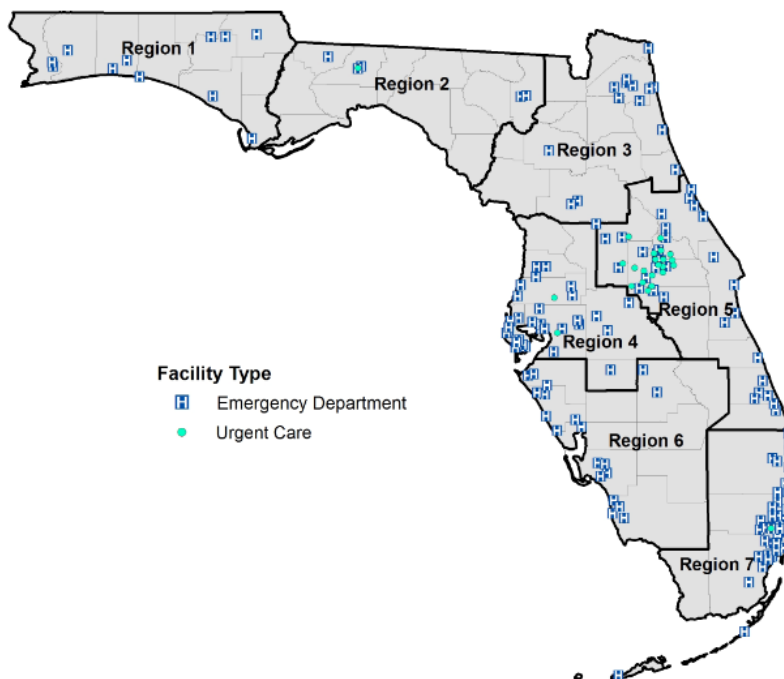
While the proportion of ED and UCC visits for ILI has increased the most over 65 age group in the past few weeks, activity remains highest in children.

FIGURE 4: Percentage of Influenza Like-Illness visits from Emergency Department (ED) and Urgent Care Center (UCC) Chief Complaints by Age, ESSENCE-FL Participating Facilities (N=219), Week 40, 2011 through Week 53, 2014 Accessed January 7, 2014



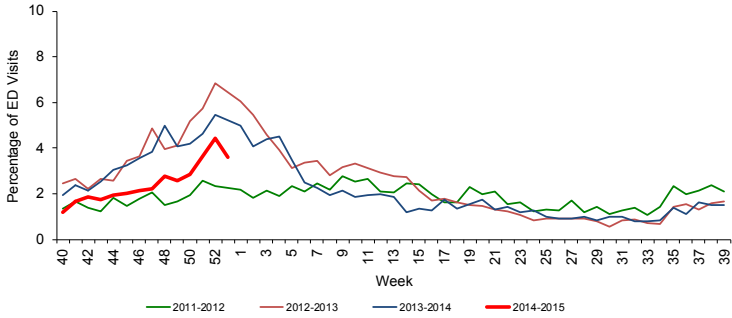
## ESSENCE-FL Syndromic Surveillance-Regional

Map 3: Emergency Departments and Urgent Care Centers Reporting Data to ESSENCE-FL by Regional Domestic Security Task Force (RDSTF), January 7, 2015 (N=219)



**FIGURE 5 - FIGURE 11** describe Emergency Department (ED) and Urgent Care Center (UCC) chief complaint data from ESSENCE-FL by Regional Domestic Security Task Force (RDSTF) regions.

FIGURE 5: Percentage of of Influenza Like-Illness Visits from ED Chief Complaints, RDSTF Region 1 ESSENCE-FL Participating Hospitals (N=12), Week 40, 2011 through Week 53, 2014 accessed January 7, 2014



- ED and UCC visits for ILI in RDSTF Regions 3-5 and 7 are above levels seen during previous years at this time.
- ED and UCC visits for ILI in RDSTF Regions 1, 2 and 6 are at or near levels seen during previous years at this time.

FIGURE 6: Percentage of of Influenza Like-Illness Visits from ED and UCC Chief Complaints, RDSTF Region 2 ESSENCE-FL Participating Facilities (N=8), Week 40, 2011 through Week 53, 2014 accessed January 7, 2014

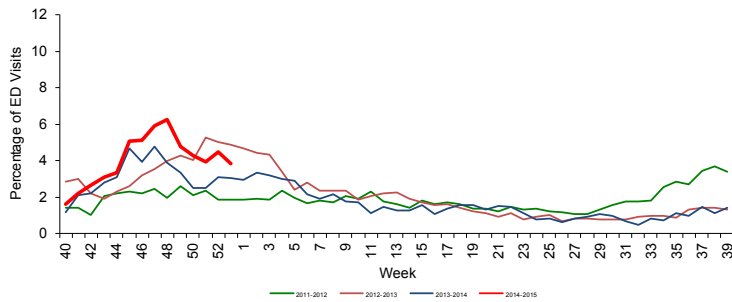


FIGURE 7: Percentage of of Influenza Like-Illness Visits from ED Chief Complaints, RDSTF Region 3 ESSENCE-FL Participating Facilities (N=20), Week 40, 2011 through Week 53, 2014 accessed January 7, 2014

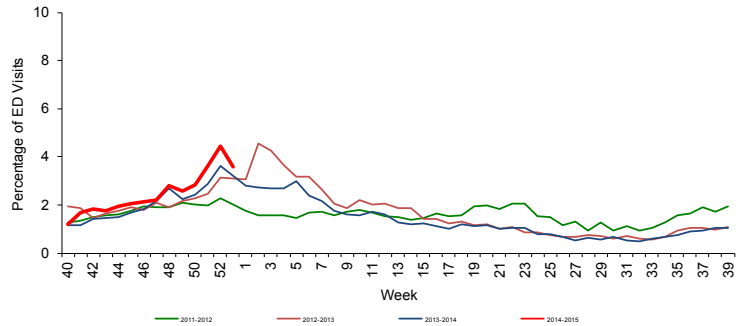


FIGURE 8: Percentage of of Influenza Like-Illness Visits from ED and UCC Chief Complaints, RDSTF Region 4 ESSENCE-FL Participating Facilities (N=42), Week 40, 2011 through Week 53, 2014 accessed January 7, 2014

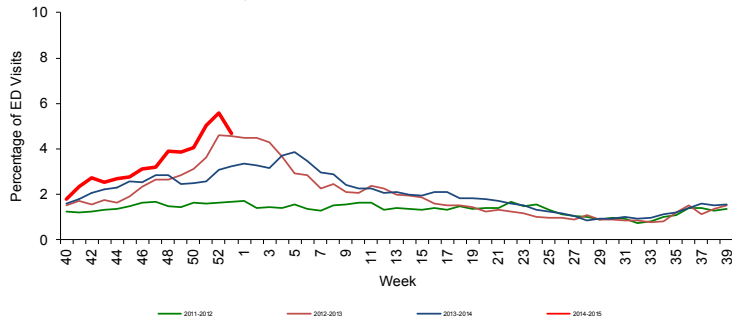


FIGURE 9: Percentage of ILI visits from ED and UCC Chief Complaints, ESSENCE-FL Participating Facilities RDSTF Region 5 ESSENCE-FL Participating Facilities (N=61), Week 40, 2011 through Week 53, 2014 accessed January 7, 2014

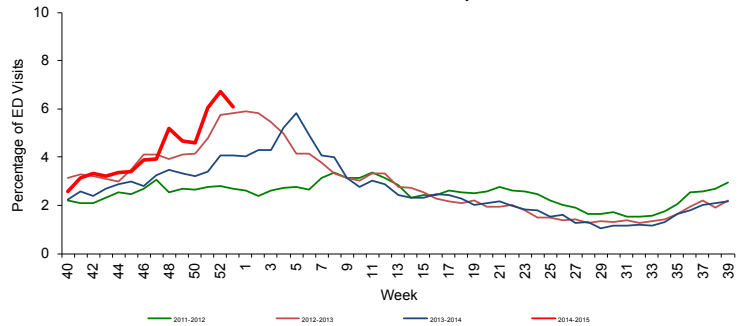


FIGURE 10: Percentage of of Influenza Like-Illness Visits from ED and UCC Chief Complaints, RDSTF Region 6 ESSENCE-FL Participating Facilities (N=24), Week 40, 2011 through Week 53, 2014 accessed January 7, 2014

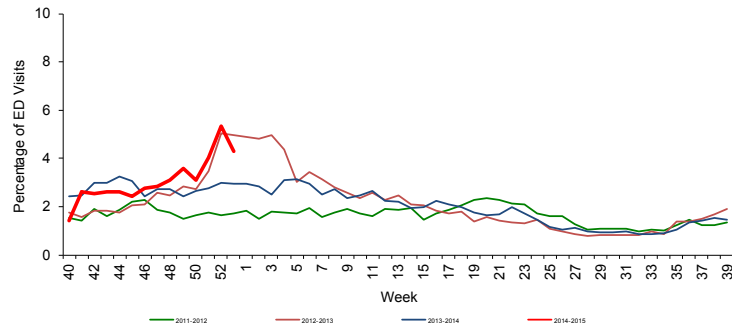
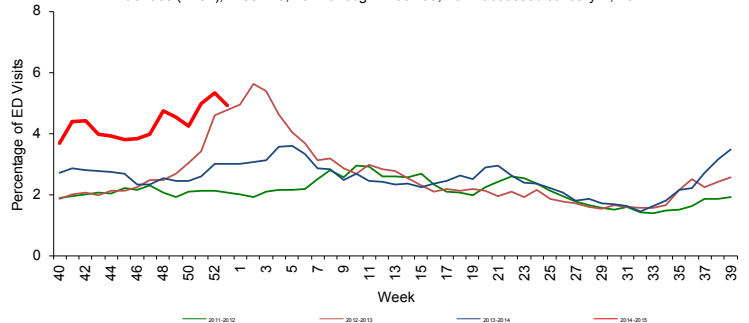


FIGURE 11: Percentage of Influenza Like-Illness Visits from ED and UCC Chief Complaints, ESSENCE-FL Participating Facilities, RDSTF Region 7 ESSENCE-FL Participating Facilities (N=52), Week 40, 2011 through Week 53, 2014 accessed January 7, 2014



**TABLE 2** shows the number of specimens tested by BPHL, how many are influenza positive and their subtypes.

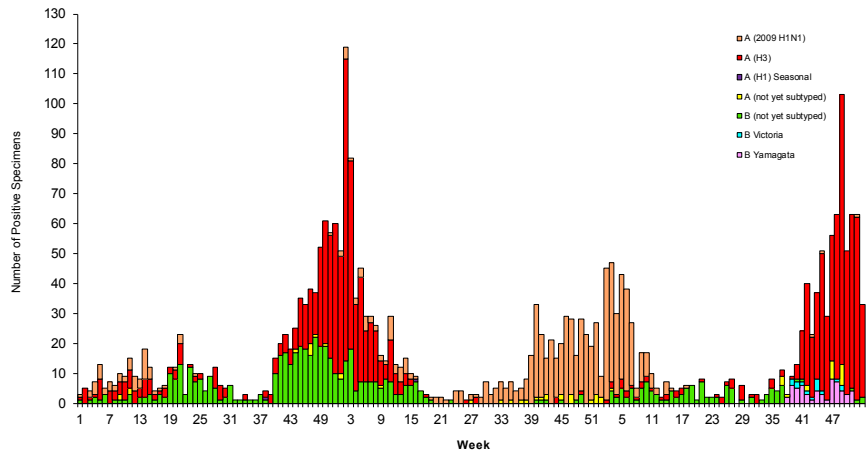
**Table 2: Bureau of Public Health Laboratories (BPHL) Viral Surveillance for Week 53 by Lab Event Date\* as reported by 10:00 a.m. January 7, 2014**

	Current Week 53	Previous Week 52
<b>Total Specimens Tested</b>	<b>57</b>	<b>85</b>
Influenza positive specimens (% of total)	40 (70.2%)	67 (78.8%)
Influenza A (2009 H1N1) (% of influenza positives)	-	1 (1.5%)
Influenza A (H3) (% of influenza positives)	31 (77.5%)	61 (91.1%)
Influenza A not yet subtyped (% of influenza positives)	7 (17.5%)	-
Influenza B Yamagata (% of influenza positives)	-	2 (3.0%)
Influenza B Victoria (% of influenza positives)	-	2 (3.0%)
Influenza B not yet subtyped (% of influenza positives)	2 (5.0%)	1 (1.5%)

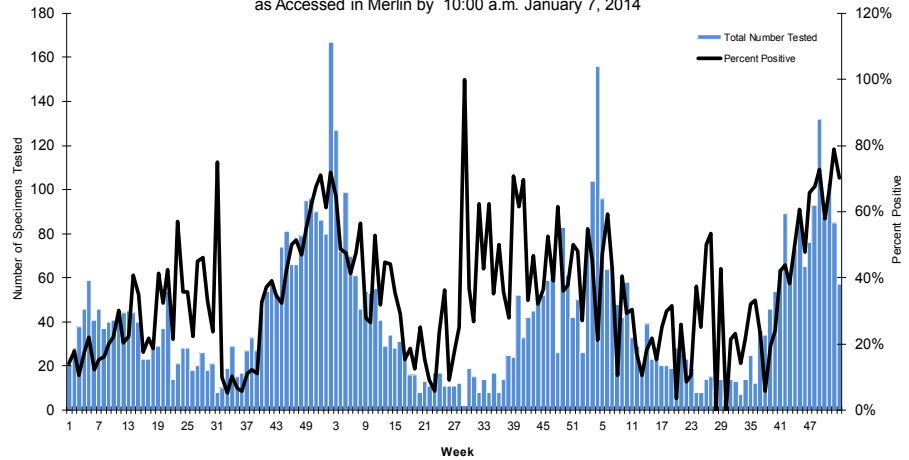
**FIGURE 12 - FIGURE 13** use BPHL viral surveillance data to track the progress of influenza infection over time. They include weekly information on how many specimens are tested by the BPHL, what proportion of those test positive for influenza and what subtypes are identified.

- **Influenza A (H3) and influenza B have been identified by BPHL this season.**
- **In recent weeks, influenza specimens submitted to BPHL tested positive for influenza A (H3), influenza A (2009 H1N1), influenza B Yamagata lineage and influenza B Victoria lineage.**
- Influenza A (H3) has been the most common strain of influenza detected by BPHL so far in the 2014-2015 influenza season.
- The drifted Influenza A (H3) strain has been detected in Florida.

**FIGURE 12: Number of Influenza-Positive Specimens Tested by the Florida Bureau of Public Health Laboratories (BPHL) by Subtype by Lab Event Date\*, Week 1, 2012 to Week 53, 2014 as Accessed in Merlin by 10:00 a.m. January 7, 2014**



**FIGURE 13: Number of Specimens Tested by Florida Bureau of Public Health Laboratories (BPHL) and Percent Positive for Influenza by Lab Event Date\* Week 1, 2012 to Week 53, 2014 as Accessed in Merlin by 10:00 a.m. January 7, 2014**



\*Please note that lab event date is defined as the earliest of the following dates associated with the lab: date specimen collected, date received by the laboratory, date reported or date inserted.

For county-specific laboratory data, please refer to the Flu Lab Report in Merlin.

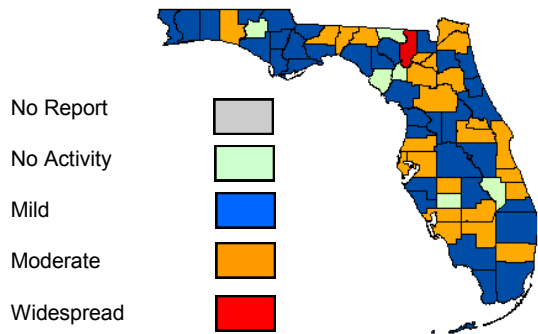
For instructions on how to use the Flu Lab Report, please see the Guide to Flu Lab Report on the Bureau of Epidemiology website: <http://www.floridahealth.gov/diseases-and-conditions/influenza/documents/flulabreportguide.pdf>

As of 11:30 a.m. January 7, 2015, a total of 67 (100%) counties reported their weekly level of influenza activity. *Please note that data reported by counties after the deadline Tuesday at 5 p.m. are recorded but may not be included in the activity map for previous weeks.*

**TABLE 3: Weekly County Influenza Activity for Week 53 (ending January 3, 2015) as Reported by 11:30 a.m. January 7, 2015**

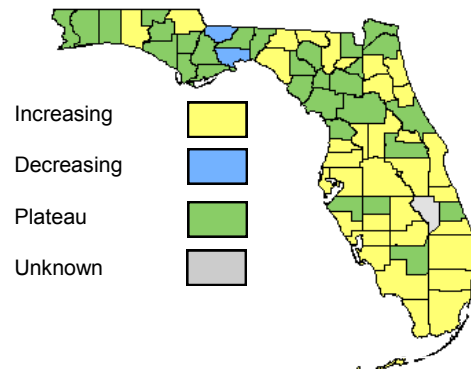
Activity Level	Week 53 Number of Counties	Week 52 Number of Counties	Week 53 Counties
No Report	0	0	-
No Activity	6	3	Desoto, Dixie, Gilchrist, Hamilton, Okeechobee, Washington
Mild	36	38	Baker, Bay, Calhoun, Citrus, Clay, Collier, Dade, Escambia, Flagler, Franklin, Gadsden, Gulf, Hernando, Highlands, Holmes, Jackson, Lafayette, Lake, Levy, Liberty, Manatee, Martin, Monroe, Okaloosa, Osceola, Palm Beach, Polk, Santa Rosa, Sarasota, St. Johns, St. Lucie, Sumter, Suwannee, Taylor, Volusia, Wakulla
Moderate	24	26	Alachua, Bradford, Brevard, Broward, Charlotte, Duval, Glades, Hardee, Hendry, Hillsborough, Indian River, Jefferson, Lee, Leon, Madison, Marion, Nassau, Orange, Pasco, Pinellas, Putnam, Seminole, Union, Walton
Widespread	1	0	Columbia

**Map 4: Weekly County Influenza Activity Level for Week 53 Reported by 11:30 a.m. January 7, 2014**



Twenty-four counties reported moderate activity.

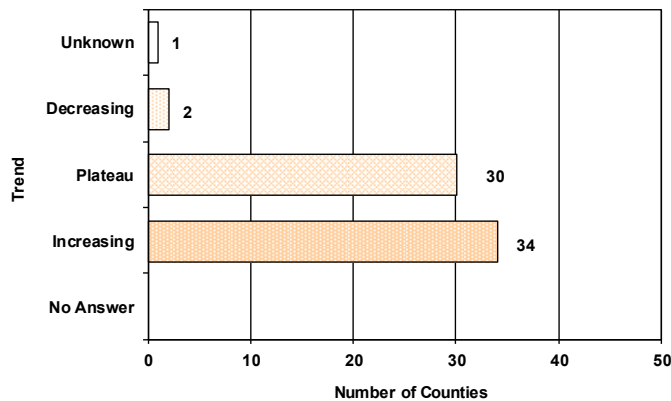
**Map 5: Weekly County Influenza Activity Trend for Week 53 Reported by 11:30 a.m. January 7, 2014**



Thirty-four counties reported increasing influenza and ILI activity.

County influenza activity data are reported to BOE through EpiGateway on a weekly basis by each county influenza coordinator. Specific information is requested about laboratory results, outbreak reports and surveillance system activity. Figures 14-23, displayed below, reflect a county's assessment of influenza activity within their county as a whole as well as influenza activity within specific settings. For week 53, two counties indicated that activity was decreasing, 30 indicated activity was about the same as previous weeks and 34 indicated that activity was increasing.

**FIGURE 14: Assessment of Overall Influenza Activity Trend**



**FIGURE 14** shows the assessment of the overall influenza activity trend in each county as reported by CHD influenza coordinators for week 53 as of 11:30 a.m. January 7, 2015.

Counties are asked to evaluate influenza activity in certain settings within their county. Each setting has a scale for activity that ranges from none or minimal activity to very high activity. What defines each of the values varies by facility type, but the example of the assessment in elementary, middle and high schools is included below. More detailed information on the meanings of the levels for each setting can be found on the webpage also included below.

No or very minimal activity -- Scattered cases of ILI with no increase in absenteeism or disruption of school activities.

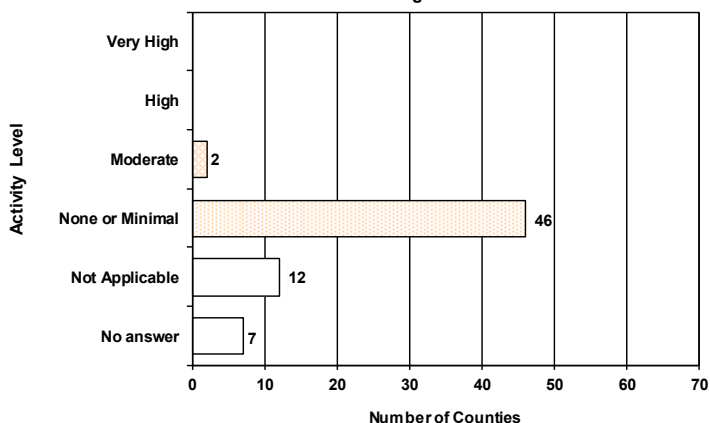
Moderate activity -- Absenteeism elevated above baseline (in range of 10 to 25%) in some but fewer than half of schools where it is known; occasional children sent home because of ILI.

High activity -- Absenteeism elevated above baseline (in range of 10 to 25%) in more than half of schools; most schools sending several or many children home each day because of ILI.

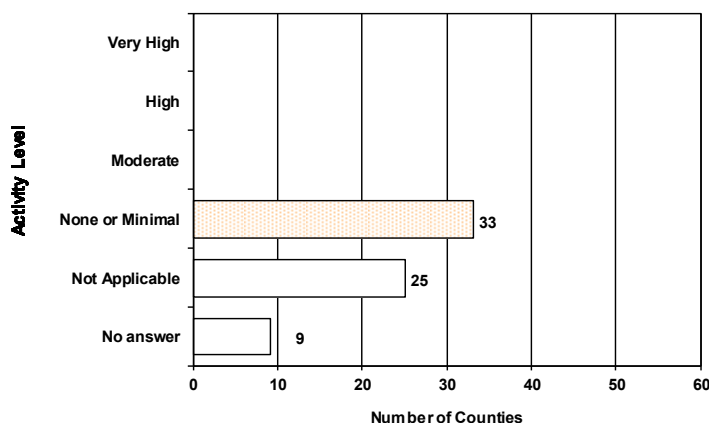
Very high activity -- Absenteeism high enough to force curtailment of some or all school activities.

**FIGURE 15 - FIGURE 18** show the activity levels in various facilities by county as reported by CHD influenza coordinators for week 53 as of 11:30 a.m., January 7, 2015.

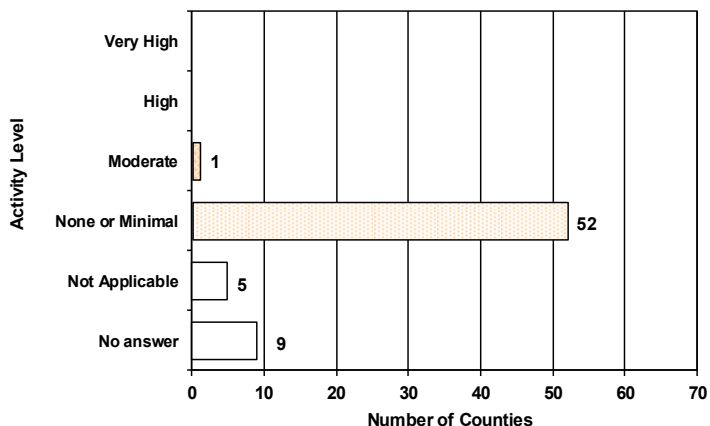
**FIGURE 15: Assessment of Influenza Activity in Elementary, Middle, and High Schools**



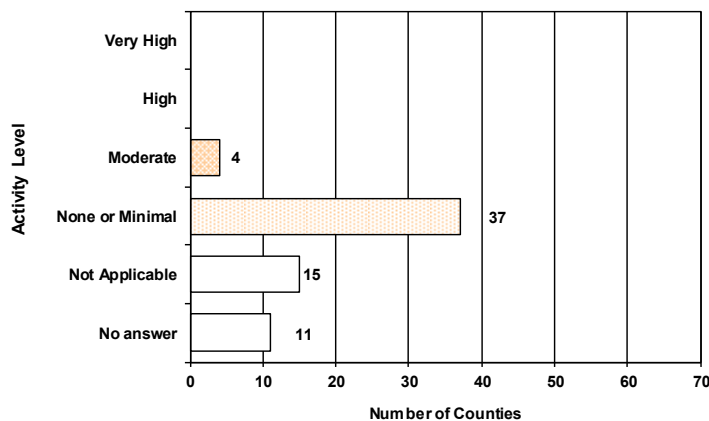
**FIGURE 16: Assessment of Influenza Activity in Colleges and Universities**



**FIGURE 17: Assessment of Influenza Activity in Jails/Prisons**

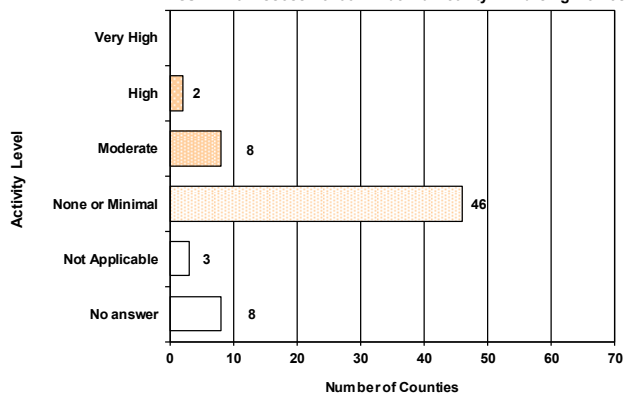


**FIGURE 18: Assessment of Influenza Activity in Retirement Facilities**

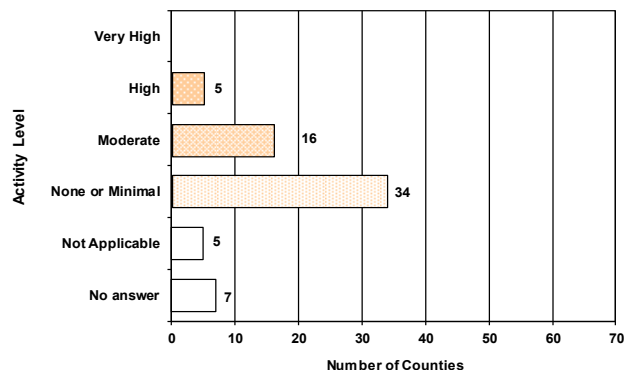


**FIGURE 19 - FIGURE 23** show the activity levels in various facilities by county as reported by CHD influenza coordinators for week 53 as of 11:30 a.m., January 7, 2015.

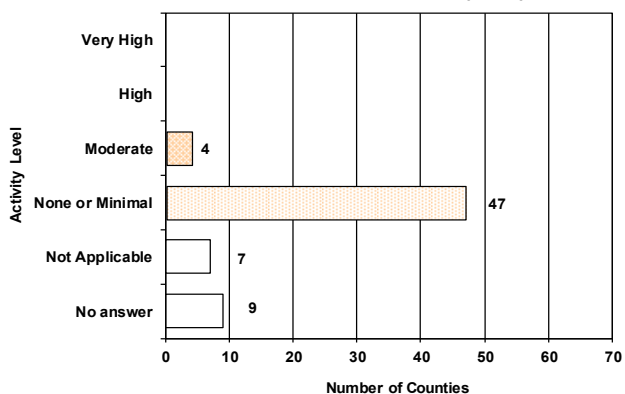
**FIGURE 19: Assessment of Influenza Activity in Nursing Homes**



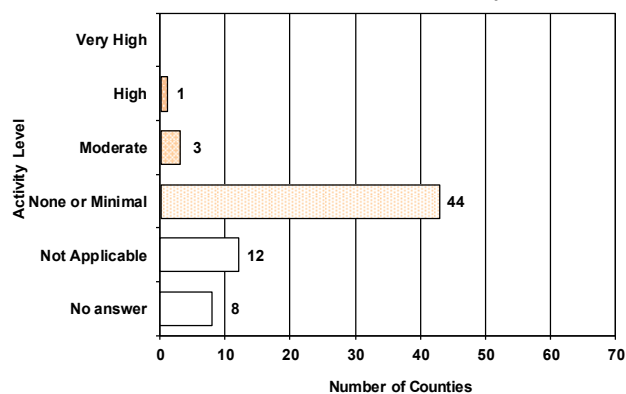
**FIGURE 20: Assessment of Influenza Activity in Healthcare Facilities**



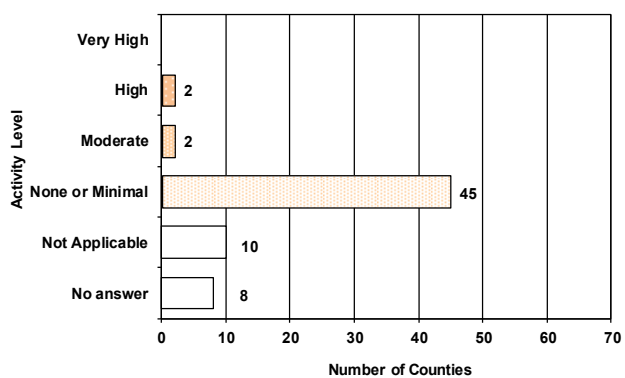
**FIGURE 21: Assessment of Influenza Activity in Day Care Centers**



**FIGURE 22: Assessment of Influenza Activity in Businesses**



**FIGURE 23: Assessment of Influenza Activity in State or Local Government Offices**



## Pediatric Influenza-Associated Mortality

No influenza-associated pediatric deaths were reported in week 53.

Three influenza-associated pediatric deaths have been reported so far in the 2014-15 influenza season.

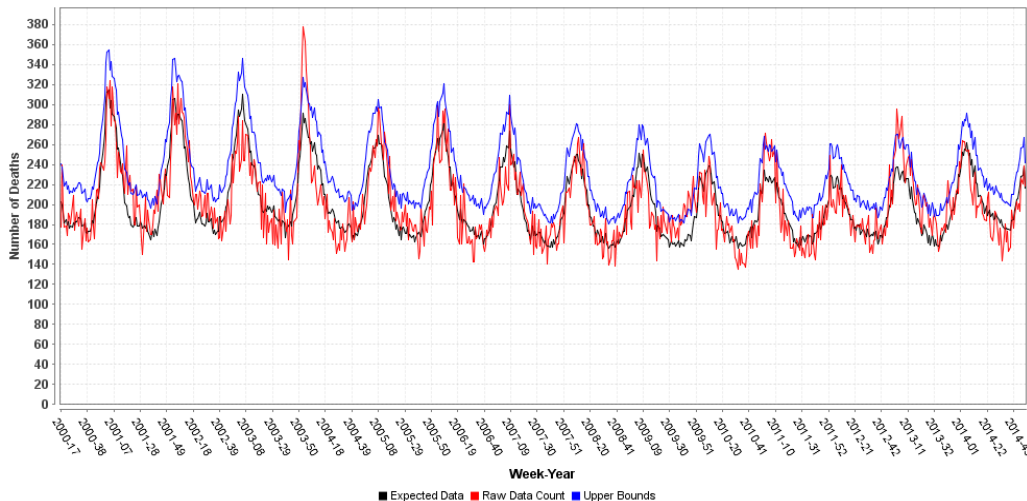


FDOH Bureau of Vital Statistics and county health departments (CHDs) collect death record data electronically in all 67 Florida counties, which can be accessed using ESSENCE-FL. For pneumonia and influenza surveillance, death record literals are queried in ESSENCE-FL using a free-text query that searches for references to pneumonia and influenza on death certificates. Any mention of pneumonia or influenza in the death certificate literals, with certain exceptions, is counted as a pneumonia and influenza death. Current season pneumonia and influenza death numbers are preliminary estimates, and may change as more data are received. *The most recent data available are displayed here. ESSENCE-FL vital statistics death records data are currently considered to be complete through week 52, 2014.*

**FIGURE 24** shows the count of preliminary estimated pneumonia and influenza deaths for all Florida counties, the number of deaths predicted using a multi-year regression model and the upper bound of the 95% confidence interval for this prediction.

- For week 52 (ending Dec 27, 2014):
- 218 preliminary estimated pneumonia and influenza deaths were reported.
  - Upper bound of 95% confidence interval for prediction: 242 deaths.
  - No excess deaths.

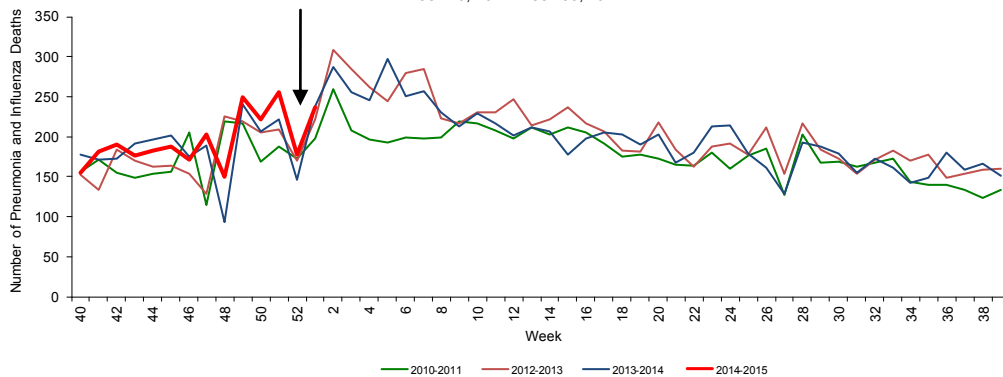
Figure 24: Vital Statistics Statewide Pneumonia and Influenza Deaths, Multi-Year Regression Model Week 17, 2000-Week 52, 2014, Reported into ESSENCE-FL



**FIGURE 25** shows pneumonia and influenza deaths for all Florida counties, week 40, 2010 - week 53, 2014, as reported into ESSENCE-FL. Deaths due to pneumonia and influenza are at or near levels seen during previous years at this time.

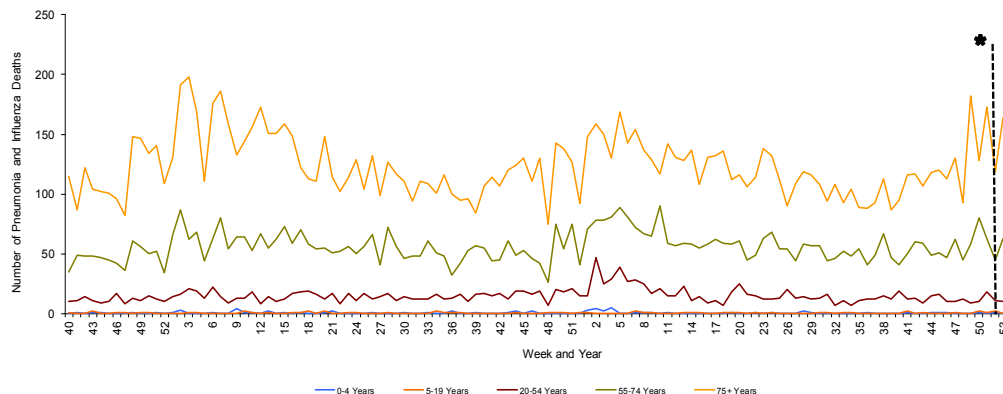
- As of week 52 (ending Dec 27, 2014):
- 2,705 pneumonia and influenza deaths have been reported so far in 2014-15 influenza season.

FIGURE 25: Vital Statistics Statewide Pneumonia and Influenza Deaths, Reported into ESSENCE-FL, Week 40, 2011-Week 53, 2014



**FIGURE 26** shows pneumonia and influenza deaths for all Florida counties by age group, week 40, 2012 - week 53, 2014, as reported into ESSENCE-FL.

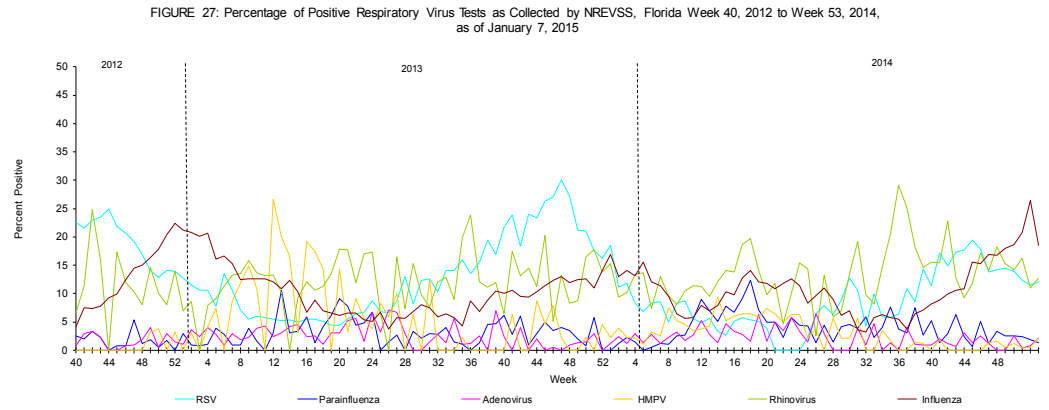
FIGURE 26: Vital Statistics Florida Pneumonia and Influenza Deaths by Age Group, Reported into ESSENCE-FL, Week 40, 2012 through Week 53, 2014



\* Death records data reported into ESSENCE-FL are currently considered to be complete through week 52, 2014.

The National Respiratory and Enteric Virus Surveillance System (NREVSS) collects data from laboratories around the country on a weekly basis. NREVSS monitors temporal and geographic patterns of six common respiratory viruses. Eight Florida facilities reported in week 53.

**FIGURE 27** shows the percentage of positive tests for multiple respiratory viruses reported by NREVSS-participating laboratories in Florida.



The 6 respiratory viruses summarized in Figure 27 are:

- Respiratory Syncytial Virus (RSV)
- Parainfluenza 1-3
- Adenovirus
- Human Metapneumovirus (HMPV)
- Rhinovirus
- Influenza

## Influenza and ILI Outbreaks Reported in EpiCom

In week 53, 2015, six outbreaks of influenza or ILI were reported in to EpiCom.

### Desoto County:

- A nursing facility reported 19 residents and four staff with ILI. Four specimens were collected and tested negative for influenza by rapid antigen test at their local healthcare provider. One specimen was collected and tested positive for RSV at BPHL. Tests for coronaviruses and enteroviruses at BPHL are still pending. Chemoprophylaxis was administered to all residents. Infection control measures were reviewed with facility leadership. This investigation is ongoing.

### Jackson County:

- A nursing facility reported an outbreak of ILI where three specimens were collected and tested positive for influenza A by rapid antigen test at their local healthcare provider. Two residents were hospitalized. Prophylaxis was recommended for residents and staff. Infection control measures were reviewed with facility leadership. This investigation is ongoing.

### Orange County:

- An assisted living facility reported an outbreak of ILI where three specimens were collected and tested positive for influenza A by PCR test at their local healthcare provider. Prophylaxis was given to all eligible residents and 71 staff. Resident vaccination rate was 98%. This investigation is ongoing.

### Palm Beach County:

- A nursing facility reported 12 residents and two staff with ILI. One resident was hospitalized and tested positive for influenza A. Chemoprophylaxis was administered to all asymptomatic residents. Resident vaccination rate was 87%. This investigation is ongoing.

### Seminole County:

- A nursing facility reported 40 residents and eight staff with ILI. Fifteen specimens tested positive for influenza A by PCR at local healthcare provider. Six residents were hospitalized. Chemoprophylaxis was administered to roommates of ill residents. Infection control measures were reviewed with facility leadership. This investigation is ongoing.

### St. Lucie County:

- A long term care facility reported three residents hospitalized with ILI. Three specimens were collected on these cases: one specimen tested positive for influenza B by rapid antigen test at their local healthcare provider, one specimen tested positive for influenza B Yamagata lineage at BPHL, and the third specimen has been submitted for testing at BPHL. Chemoprophylaxis was administered to all eligible residents. Infection control measures were reviewed with facility leadership.

Map 6: Influenza and ILI outbreaks by county, Week 53, 2014 as Reported by 11:30 a.m., January 7, 2015

**Forty-five** outbreaks of influenza or ILI have been reported into EpiCom so far in the 2014-2015 season.

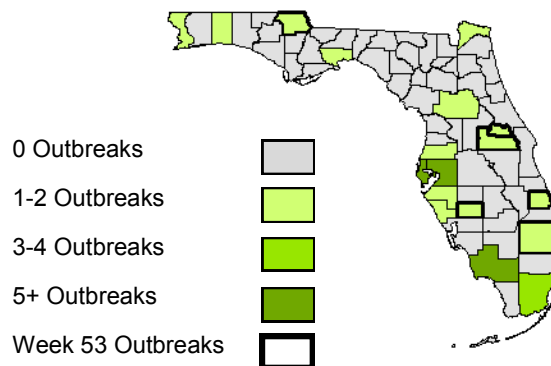


TABLE 4 : Summary of Florida Influenza and ILI Outbreaks by Facility Status, Week 40-53, 2014

Setting	Number of outbreaks	Implicated Viruses
Schools	10	<ul style="list-style-type: none"> <li>Two outbreaks due to influenza A unspecified and influenza B unspecified</li> <li>Four outbreaks due to influenza A unspecified</li> <li>One outbreak due to influenza (H3)</li> <li>Three outbreaks virus information not yet available</li> </ul>
Colleges and universities	0	<ul style="list-style-type: none"> <li>No outbreaks</li> </ul>
Daycares	7	<ul style="list-style-type: none"> <li>One outbreak due to parainfluenza III</li> <li>One outbreak due to RSV</li> <li>One outbreak due to influenza A unspecified and influenza B unspecified</li> <li>Two outbreaks due to influenza A unspecified</li> <li>Three outbreaks due to influenza (H3)</li> </ul>
Private businesses	0	<ul style="list-style-type: none"> <li>No outbreaks</li> </ul>
Local and state government offices	0	<ul style="list-style-type: none"> <li>No outbreaks</li> </ul>
Jails and prisons	0	<ul style="list-style-type: none"> <li>No outbreaks</li> </ul>
Retirement homes	0	<ul style="list-style-type: none"> <li>No outbreaks</li> </ul>
Nursing homes and long term care facilities	28	<ul style="list-style-type: none"> <li>Six outbreaks due to influenza A (H3)</li> <li>Fourteen outbreaks due to influenza A unspecified</li> <li>One outbreak due to influenza A unspecified and influenza B unspecified</li> <li>One outbreak due to influenza A (H3) and rhinovirus</li> <li>One outbreak due to influenza A unspecified and RSV</li> <li>One outbreak due to RSV</li> <li>One outbreaks due to influenza B Yamagata</li> <li>One outbreak due to influenza B unspecified</li> <li>Two outbreaks virus information not yet available</li> </ul>
Healthcare facilities	0	<ul style="list-style-type: none"> <li>No outbreaks</li> </ul>
Other	0	<ul style="list-style-type: none"> <li>No outbreaks</li> </ul>
<b>Total</b>	<b>45</b>	<ul style="list-style-type: none"> <li>Four outbreaks due to influenza A unspecified and influenza B unspecified</li> <li>Twenty outbreaks due to influenza A unspecified</li> <li>One outbreak due to parainfluenza III</li> <li>Two outbreaks due to RSV</li> <li>Ten outbreaks due to influenza A (H3)</li> <li>One outbreak due to influenza A unspecified and RSV</li> <li>One outbreak due to influenza B Yamagata</li> <li>One outbreak due to influenza B unspecified</li> <li>Six outbreaks, virus information not yet available</li> </ul>

## Florida ILI Surveillance System Summary

### Florida ILINet

#### *Measures trends in ILI visits to outpatient doctor's offices*

Network of volunteer healthcare providers who:  
 Report ILI and total visit counts every week  
 Submit specimens for confirmatory testing

### ESSENCE-FL Syndromic Surveillance

#### *Measures trends in ILI visits and hospital admissions from emergency departments and urgent care clinics*

EDs and UCCs electronically transmit visit data into ESSENCE-FL daily

Visit data summarized in the Florida Flu Review include:

Percent of ED/urgent care visits due to ILI

Percent of ED/urgent care visitors with ILI who are admitted to the hospital

### ESSENCE-FL Vital Statistics Portal

#### *Measures influenza mortality by using death certificates with pneumonia or influenza listed as a cause of death.*

Death certificate data from the Bureau of Vital Statistics can be accessed through ESSENCE-FL and are used for pneumonia and influenza mortality surveillance

### County Influenza Activity in EpiGateway

#### *Uses data provided by CHDs to create a county-by-county breakdown of influenza and ILI activity around the state*

CHD epidemiologists report their county's influenza and ILI surveillance data weekly into the EpiGateway website

Influenza activity is classified as: No Activity, Mild, Moderate or Widespread

Setting-specific influenza activity and influenza trend is also reported

### Outbreak Reporting in EpiCom

#### *Tracks influenza and ILI outbreak investigations by CHDs and shows what types of influenza are responsible for outbreaks and where outbreaks are occurring*

CHD epidemiologists report outbreaks of influenza or ILI into EpiCom, Florida's online disease communication system

Outbreaks are defined as two or more cases of influenza or ILI in a specific setting

### BPHL

BPHL performs confirmatory testing and subtyping on surveillance specimens from ILINet sentinel providers, outbreak investigations, patients with severe or unusual influenza presentations and medical examiners

### Case-Based Influenza Surveillance

#### **Pediatric Influenza-Associated Mortality**

Deaths in children with laboratory-confirmed influenza infection are reportable in Florida

#### **Influenza due to Novel or Pandemic Strains**

Patients with influenza infection due to novel or pandemic strains are reportable in Florida

### National Respiratory and Enteric Virus Surveillance System (NREVSS)

Information on locating influenza vaccination can be found using the flu vaccine locator at: <http://flushot.healthmap.org/>